



# SZABO SCANDIC

Part of Europa Biosite

## Produktinformation



Forschungsprodukte & Biochemikalien



Zellkultur & Verbrauchsmaterial



Diagnostik & molekulare Diagnostik



Laborgeräte & Service

Weitere Information auf den folgenden Seiten!  
See the following pages for more information!



### Lieferung & Zahlungsart

siehe unsere [Liefer- und Versandbedingungen](#)

### Zuschläge

- Mindermengenzuschlag
- Trockeneiszuschlag
- Gefahrgutzuschlag
- Expressversand

### SZABO-SCANDIC HandelsgmbH

Quellenstraße 110, A-1100 Wien

T. +43(0)1 489 3961-0

F. +43(0)1 489 3961-7

[mail@szabo-scandic.com](mailto:mail@szabo-scandic.com)

[www.szabo-scandic.com](http://www.szabo-scandic.com)

[linkedin.com/company/szaboscandic](https://www.linkedin.com/company/szaboscandic) 

# TOX Recombinant Monoclonal Antibody [BLR212K]

Rabbit Recombinant Monoclonal

|                      |            |             |
|----------------------|------------|-------------|
| Purified             | Protein ID | NP_055544.1 |
| Catalog No. A700-212 | GeneID     | 9760        |
| Lot No. A700-212-1   |            |             |

---

|                              |  |
|------------------------------|--|
| <b>APPLICATIONS</b>          | WB, IP, ICC, F   |
| <b>SPECIES REACTIVITY</b>    | Human, Mouse   |
| <b>AMOUNT</b>                | 100 µl (50+ tests)   |
| <b>CONCENTRATION</b>         | 250 µg/ml  |
| <b>STORAGE/SHELF LIFE</b>    | 2 – 8°C / 1 year from date of receipt                                    |
| <b>PHYSICAL STATE</b>        | Liquid   |
| <b>BUFFER</b>                | Borate Buffered Saline (BBS) pH 8.2 with 0.1% BSA and 0.09% Sodium Azide |
| <b>ISOTYPE</b>               | IgG  |
| <b>CLONE #</b>               | BLR212K  |
| <b>ORIGIN</b>                | USA  |
| <b>PRODUCTION PROCEDURES</b> | Recombinant antibody was purified from cell culture supernatant.         |

Immunogen was a peptide representing a region between residue 50 and 100 of human Thymocyte selection-associated high mobility group box protein TOX using the numbering given in entry NP\_055544.1 (Gene ID 9760).

**APPLICATIONS** Centrifuge tube to remove product from lid. Optimal working dilutions should be determined experimentally by the investigator. Prepare working dilution immediately before use.

|                     |   |
|---------------------|---|
| Western Blot        | 1:1,000   |
| Immunoprecipitation | 20 µl/1 mg lysate   |
| Immunocytochemistry | 1:100 to 1:500. Epitope retrieval with Tris-EDTA pH9.0 is recommended for FFPE cell sections.       |
| Flow Cytometry      | Fixed in 4% formaldehyde and permeabilized with 90% methanol. 0.1 µl per 1 x 10 <sup>6</sup> cells. |

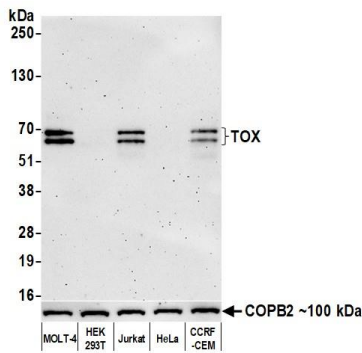
**IHC HUMAN CONTROLS** CCRF-CEM cells, HH Cells, Jurkat Cells, MOLT-4 Cells

**IHC MOUSE CONTROLS** A20 Cells, BW5147.3 cells, EL-4 cells

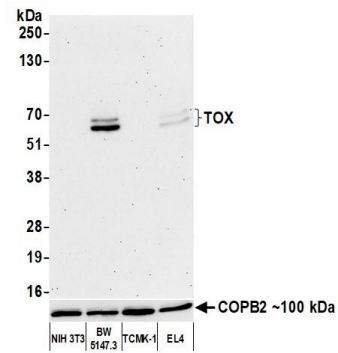
**ADDITIONAL INFO** <https://www.bethyl.com/product/A700-212>

Use the link above to view SDS, a current list of citations, and other product specific information.

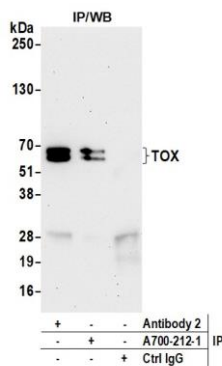
This document certifies that this product has met all of the quality control standards defined by Bethyl Laboratories, Inc.  
Michael Spencer, PhD Date: April 27, 2022



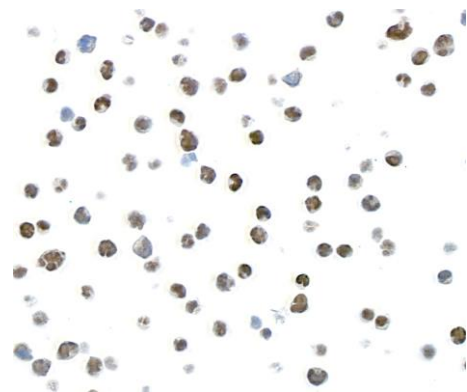
**Detection of human TOX by western blot.** *Samples:* Whole cell lysate (10 µg) from MOLT-4, HEK293T, Jurkat, HeLa, and CCRF-CEM cells prepared using NETN lysis buffer. *Antibody:* Rabbit anti-TOX recombinant monoclonal antibody [BLR212K] (A700-212 lot 1) used at 1:1000. *Secondary:* HRP-conjugated goat anti-rabbit IgG (A120-101P). Chemiluminescence with an exposure time of 3 minutes. Lower Panel: Rabbit anti-COPB2 antibody (A304-523A).



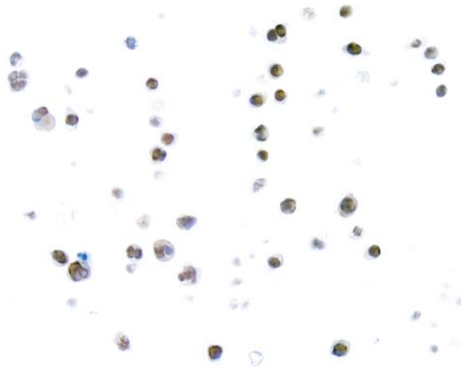
**Detection of mouse TOX by western blot.** *Samples:* Whole cell lysate (10 µg) from NIH 3T3, BW5147.3, TCMK-1, and EL4 cells prepared using NETN lysis buffer. *Antibody:* Rabbit anti-TOX recombinant monoclonal antibody [BLR212K] (A700-212 lot 1) used at 1:1000. *Secondary:* HRP-conjugated goat anti-rabbit IgG (A120-101P). Chemiluminescence with an exposure time of 75 seconds. Lower Panel: Rabbit anti-COPB2 antibody (A304-523A).



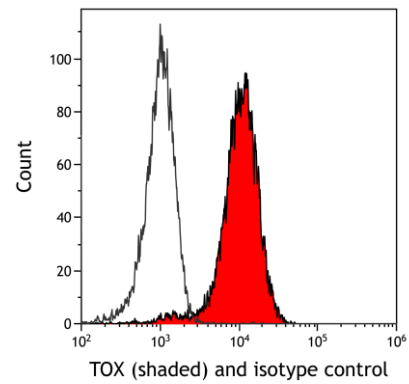
**Detection of human TOX by western blot of immunoprecipitates.** *Samples:* Whole cell lysate (1.0 mg per IP reaction; 5% of IP loaded) from MOLT-4 cells prepared using NETN lysis buffer. *Antibodies:* Rabbit anti-TOX recombinant monoclonal antibody [BL-178-12C7] (A700-212 lot 1) used for IP at 20 µl/mg lysate. TOX was also immunoprecipitated by a second antibody against a different epitope of TOX (Antibody 2). For blotting immunoprecipitated TOX, A700-212 was used at 1:1000. Chemiluminescence with an exposure time of 30 seconds.



**Detection of human TOX by immunocytochemistry.** *Sample:* FFPE section of MOLT-4 cells. *Antibody:* Rabbit anti-TOX recombinant monoclonal antibody [BLR212K] (A700-212 lot 1). *Secondary:* HRP-conjugated goat anti-rabbit IgG (A120-501P).

**Detection of mouse TOX by immunocytochemistry.**

*Sample:* FFPE section of BW5147.3 cells. *Antibody:* Rabbit anti-TOX recombinant monoclonal antibody [BLR212K] (A700-212 lot 1). *Secondary:* HRP-conjugated goat anti-rabbit IgG (A120-501P).



**Detection of human TOX (shaded) in Jurkat cells by flow cytometry.** *Antibody:* Rabbit anti-TOX recombinant monoclonal antibody [BLR212K] (A700-212) or isotype control (unshaded). *Secondary:* DyLight® 488-conjugated goat anti-rabbit IgG (A120-101D2).