



SZABO SCANDIC

Part of Europa Biosite

Produktinformation



Forschungsprodukte & Biochemikalien



Zellkultur & Verbrauchsmaterial



Diagnostik & molekulare Diagnostik



Laborgeräte & Service

Weitere Information auf den folgenden Seiten!
See the following pages for more information!



Lieferung & Zahlungsart

siehe unsere [Liefer- und Versandbedingungen](#)

Zuschläge

- Mindermengenzuschlag
- Trockeneiszuschlag
- Gefahrgutzuschlag
- Expressversand

SZABO-SCANDIC HandelsgmbH

Quellenstraße 110, A-1100 Wien

T. +43(0)1 489 3961-0

F. +43(0)1 489 3961-7

mail@szabo-scandic.com

www.szabo-scandic.com

[linkedin.com/company/szaboscandic](https://www.linkedin.com/company/szaboscandic) 

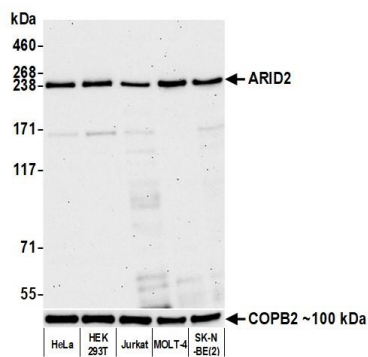
ARID2 Recombinant Monoclonal Antibody [BLR213K]

Rabbit Recombinant Monoclonal

Purified Protein ID NP_689854.2
Catalog No. A700-213 GeneID 196528
Lot No. A700-213-1

APPLICATIONS	WB, IHC, ICC, F
SPECIES REACTIVITY	Human
AMOUNT	100 µl (50+ tests)
CONCENTRATION	250 µg/ml
STORAGE/SHELF LIFE	2 – 8°C / 1 year from date of receipt
PHYSICAL STATE	Liquid
BUFFER	Borate Buffered Saline (BBS) pH 8.2 with 0.1% BSA and 0.09% Sodium Azide
ISOTYPE	IgG
CLONE #	BLR213K
ORIGIN	USA
PRODUCTION PROCEDURES	Recombinant antibody was purified from cell culture supernatant. Immunogen was a peptide representing a region between residue 1785 and the C-terminus (residue 1835) of human AT-rich interactive domain-containing protein 2 (aka ARID2) using the numbering given in entry NP_689854.2 (Gene ID 196528).
APPLICATIONS	Centrifuge tube to remove product from lid. Optimal working dilutions should be determined experimentally by the investigator. Prepare working dilution immediately before use. Western Blot 1:1,000 Immunohistochemistry 1:100 to 1:500. Epitope retrieval with Tris-EDTA pH6.0 is recommended for FFPE tissue sections. Immunocytochemistry 1:100 to 1:500. Epitope retrieval with Tris-EDTA pH9.0 is recommended for FFPE cell sections. Flow Cytometry Fixed in 4% formaldehyde and permeabilized with 90% methanol. 1 µl per 1 x 10 ⁶ cells.
IHC HUMAN CONTROLS	Breast Carcinoma, Lung Carcinoma, Ovarian Carcinoma, Prostate Carcinoma, Testicular Seminoma, Tonsil, HeLa Cells, Hep-G2 Cells, Jurkat Cells, LNCap cells, SK-N-BE (2) Cells
ADDITIONAL INFO	https://www.bethyl.com/product/A700-213 Use the link above to view SDS, a current list of citations, and other product specific information.

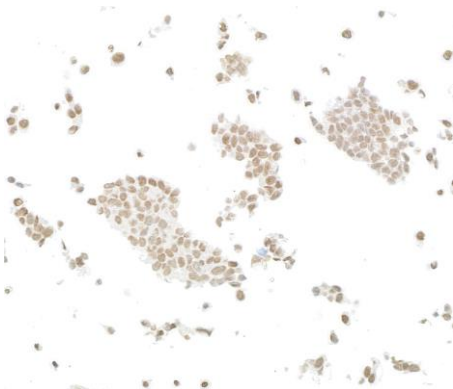
This document certifies that this product has met all of the quality control standards defined by Bethyl Laboratories, Inc.
Michael Spencer, PhD Date: May 31, 2022



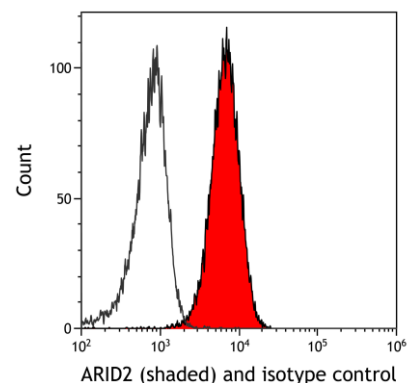
Detection of human ARID2 by western blot. *Samples:* Whole cell lysate (10 μ g) from HeLa, HEK293T, Jurkat, MOLT-4, and SK-N-BE(2) cells prepared using NETN lysis buffer. *Antibody:* Rabbit anti-ARID2 recombinant monoclonal antibody [BLR213K] (A700-213 lot 1) used at 1:1000. *Secondary:* HRP-conjugated goat anti-rabbit IgG (A120-101P). Chemiluminescence with an exposure time of 75 seconds. Lower Panel: Rabbit anti-COPB2 antibody (A304-523A).



Detection of human ARID2 by immunohistochemistry. *Sample:* FFPE section of prostate carcinoma. *Antibody:* Rabbit anti-ARID2 recombinant monoclonal antibody [BLR213K] (A700-213 lot 1). *Secondary:* HRP-conjugated goat anti-rabbit IgG (A120-501P).



Detection of human ARID2 by immunocytochemistry. *Sample:* FFPE section of LNCaP cells. *Antibody:* Rabbit anti-ARID2 recombinant monoclonal antibody [BLR213K] (A700-213 lot 1). *Secondary:* HRP-conjugated goat anti-rabbit IgG (A120-501P).



Detection of human ARID2 (shaded) in Jurkat cells by flow cytometry. *Antibody:* Rabbit anti-ARID2 recombinant monoclonal antibody [BLR0213K] (A700-213) or isotype control (unshaded). *Secondary:* DyLight[®] 488-conjugated goat anti-rabbit IgG (A120-101D2).