



SZABO SCANDIC

Part of Europa Biosite

Produktinformation



Forschungsprodukte & Biochemikalien



Zellkultur & Verbrauchsmaterial



Diagnostik & molekulare Diagnostik



Laborgeräte & Service

Weitere Information auf den folgenden Seiten!
See the following pages for more information!



Lieferung & Zahlungsart

siehe unsere [Liefer- und Versandbedingungen](#)

Zuschläge

- Mindermengenzuschlag
- Trockeneiszuschlag
- Gefahrgutzuschlag
- Expressversand

SZABO-SCANDIC HandelsgmbH

Quellenstraße 110, A-1100 Wien

T. +43(0)1 489 3961-0

F. +43(0)1 489 3961-7

mail@szabo-scandic.com

www.szabo-scandic.com

[linkedin.com/company/szaboscandic](https://www.linkedin.com/company/szaboscandic) 

CD22 Recombinant Monoclonal Antibody [BLR214K]

Rabbit Recombinant Monoclonal

Purified	Protein ID	NP_001762.2
Catalog No. A700-214	GeneID	933
Lot No. A700-214-1		

APPLICATIONS	WB, IP, IHC, ICC, F
SPECIES REACTIVITY	Human
AMOUNT	100 µl (50+ tests)
CONCENTRATION	500 µg/ml
STORAGE/SHELF LIFE	2 – 8°C / 1 year from date of receipt
PHYSICAL STATE	Liquid
BUFFER	Borate Buffered Saline (BBS) pH 8.2 with 0.1% BSA and 0.09% Sodium Azide
ISOTYPE	IgG
CLONE #	BLR214K
ORIGIN	USA
PRODUCTION PROCEDURES	Recombinant antibody was purified from cell culture supernatant.

Immunogen was a recombinant protein representing the extracellular domain of human B-cell receptor CD22 (residues 20–687, NP_001762.2).

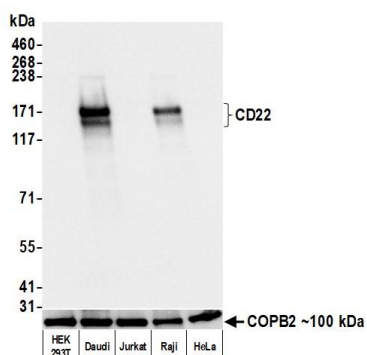
APPLICATIONS Centrifuge tube to remove product from lid. Optimal working dilutions should be determined experimentally by the investigator. Prepare working dilution immediately before use.

Western Blot	1:1,000
Immunoprecipitation	12 µl/1 mg lysate
Immunohistochemistry	1:100 to 1:500. Epitope retrieval with citrate Buffer pH 6.0 is recommended for FFPE tissue sections.
Immunocytochemistry	1:100 to 1:500. Epitope retrieval with citrate Buffer pH 6.0 is recommended for FFPE cell sections.
Flow Cytometry	Live and cells fixed in 4% formaldehyde and permeabilized with 90% methanol. 0.05 µl per 1 x 10 ⁶ cells.

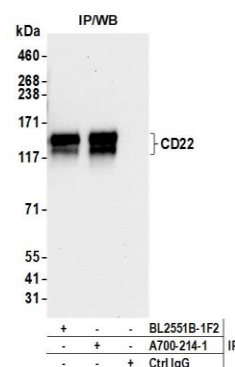
IHC HUMAN CONTROLS Appendix, Burkitt lymphoma, Tonsil, Daudi Cells, Raji Cells, Ramos Cells

ADDITIONAL INFO <https://www.fortislife.com/p/A700-214>
Use the link above to view SDS, a current list of citations, and other product specific information.

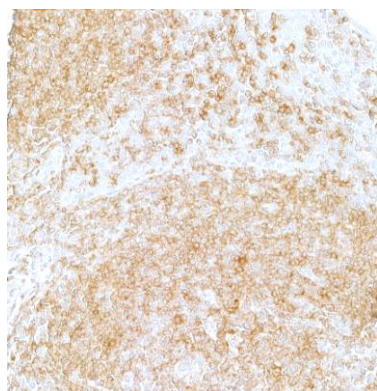
This document certifies that this product has met all of the quality control standards defined by Bethyl Laboratories, Inc.
Michael Spencer, PhD Date: June 30, 2022



Detection of human CD22 by western blot. *Samples:* Whole cell lysate (5 µg) from HEK293T, Daudi, Jurkat, Raji, and HeLa cells prepared using NETN lysis buffer. *Antibody:* Rabbit anti-CD22 recombinant monoclonal antibody [BLR214K] (A700-214 lot 1) used at 1:1000. *Secondary:* HRP-conjugated goat anti-rabbit IgG (A120-101P). Chemiluminescence with an exposure time of 1 second. Lower Panel: Rabbit anti-COPB2 antibody (A304-523A).



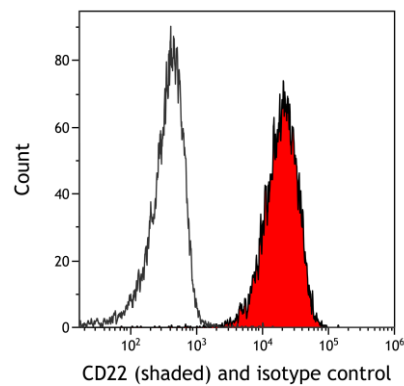
Detection of human CD22 by western blot of immunoprecipitates. *Samples:* Whole cell lysate (1.0 mg per IP reaction; 20% of IP loaded) from Daudi cells prepared using NETN lysis buffer. *Antibodies:* Rabbit anti-CD22 recombinant monoclonal antibody [BLR214K] (A700-214 lot 1) used for IP at 12 µl/mg lysate. CD22 was also immunoprecipitated by a second antibody against a different epitope of CD22 (BL-2551B-1F2). For blotting immunoprecipitated CD22, A700-214 was used at 1:1000. Chemiluminescence with an exposure time of 10 seconds.



Detection of human CD22 by immunohistochemistry. *Sample:* FFPE section of tonsil. *Antibody:* Rabbit anti-CD22 recombinant monoclonal antibody [BLR214K] (A700-214-1). *Secondary:* HRP-conjugated goat anti-rabbit IgG (A120-501P).



Detection of human CD22 by immunocytochemistry. *Sample:* FFPE section of daudi cells. *Antibody:* Rabbit anti-CD22 recombinant monoclonal antibody [BLR214K] (A700-214-1). *Secondary:* HRP-conjugated goat anti-rabbit IgG (A120-501P).



Detection of human CD22 (shaded) in Raji cells by flow cytometry. *Antibody:* Rabbit anti-CD22 recombinant monoclonal antibody [BLR214K] (A700-214) or isotype control (unshaded). *Secondary:* DyLight® 650-conjugated goat anti-rabbit IgG (A120-101D5).