



# SZABO SCANDIC

Part of Europa Biosite

## Produktinformation



Forschungsprodukte & Biochemikalien



Zellkultur & Verbrauchsmaterial



Diagnostik & molekulare Diagnostik



Laborgeräte & Service

Weitere Information auf den folgenden Seiten!  
See the following pages for more information!



### Lieferung & Zahlungsart

siehe unsere [Liefer- und Versandbedingungen](#)

### Zuschläge

- Mindermengenzuschlag
- Trockeneiszuschlag
- Gefahrgutzuschlag
- Expressversand

### SZABO-SCANDIC HandelsgmbH

Quellenstraße 110, A-1100 Wien

T. +43(0)1 489 3961-0

F. +43(0)1 489 3961-7

[mail@szabo-scandic.com](mailto:mail@szabo-scandic.com)

[www.szabo-scandic.com](http://www.szabo-scandic.com)

[linkedin.com/company/szaboscandic](https://www.linkedin.com/company/szaboscandic) 

# FOX2/RBM9 Recombinant Monoclonal Antibody [BLR215K]

Rabbit Recombinant Monoclonal

Purified Protein ID NM\_001031695.4  
Catalog No. A700-215-T GeneID 23543  
Lot No. A700-215-T-1

---

**APPLICATIONS** WB, IP, IHC, ICC, F  
**SPECIES REACTIVITY** Human, Mouse  
**AMOUNT** 10 µl (5+ tests)  
**CONCENTRATION** 100 µg/ml  
**STORAGE/SHELF LIFE** 2 – 8°C / 1 year from date of receipt  
**PHYSICAL STATE** Liquid  
**BUFFER** Borate Buffered Saline (BBS) pH 8.2 with 0.1% BSA and 0.09% Sodium Azide  
**ISOTYPE** IgG  
**CLONE #** BLR215K  
**ORIGIN** USA  
**PRODUCTION PROCEDURES** Recombinant antibody was purified from cell culture supernatant.

Immunogen was a peptide representing a region between residue 1 and 50 of human RNA binding protein fox-1 homolog 2 (aka RBM9, FOX2) using the numbering given in entry NM\_001031695.4 (Gene ID 23543).

**APPLICATIONS** Centrifuge tube to remove product from lid. Optimal working dilutions should be determined experimentally by the investigator. Prepare working dilution immediately before use.

Western Blot	1:1,000
Immunoprecipitation	20 µl/1 mg lysate
Immunohistochemistry	1:100 to 1:500. Epitope retrieval with citrate Buffer pH 6.0 is recommended for FFPE tissue sections.
Immunocytochemistry	1:100 to 1:500. Epitope retrieval with citrate Buffer pH 6.0 is recommended for FFPE cell sections.
Flow Cytometry	Fixed in 4% formaldehyde and permeabilized with 90% methanol. 0.5 µl per 1 x 10 <sup>6</sup> cells.

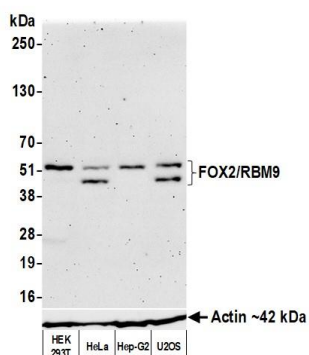
**IHC HUMAN CONTROLS** Breast Carcinoma, Colon Carcinoma, Ovarian Carcinoma, Prostate Carcinoma, Stomach Carcinoma, Testicular Seminoma, GaMG cells, HeLa Cells, HH Cells, SK-N-BE (2) Cells

**IHC MOUSE CONTROLS** Plasmacytoma, RenCa Tumor, Testis, NIH 3T3 Cells, RenCa Cells, TCMK Cells

**ADDITIONAL INFO** <https://www.fortislife.com/p/A700-215-T>

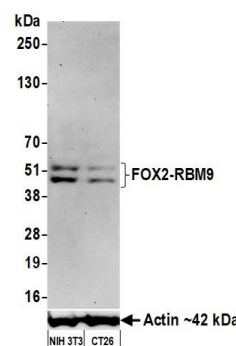
Use the link above to view SDS, a current list of citations, and other product specific information.

This document certifies that this product has met all of the quality control standards defined by Bethyl Laboratories, Inc.  
Michael Spencer, PhD Date: June 30, 2022



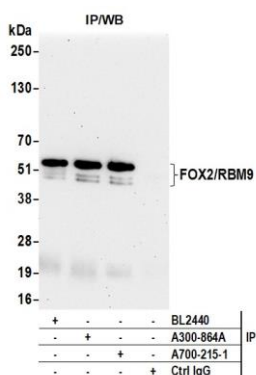
**Detection of human FOX2/RBM9 by western blot.**

*Samples:* Whole cell lysate (50 µg) from HEK293T, HeLa, Hep-G2, and U2OS cells prepared using NETN lysis buffer. *Antibody:* Rabbit anti-FOX2/RBM9 recombinant monoclonal antibody [BLR215K] (A700-215-T lot 1) used at 1:1000. *Secondary:* HRP-conjugated goat anti-rabbit IgG (A120-101P). Chemiluminescence with an exposure time of 3 minutes. Lower Panel: Rabbit anti-Actin recombinant monoclonal antibody [BLR057F] (A700-057).



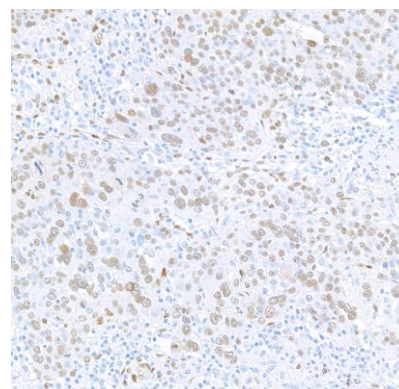
**Detection of mouse FOX2/RBM9 by western blot.**

*Samples:* Whole cell lysate (50 µg) from NIH 3T3 and CT26 cells prepared using NETN lysis buffer. *Antibody:* Rabbit anti-FOX2/RBM9 recombinant monoclonal antibody [BLR215K] (A700-215-T lot 1) used at 1:1000. *Secondary:* HRP-conjugated goat anti-rabbit IgG (A120-101P). Chemiluminescence with an exposure time of 75 seconds. Lower Panel: Rabbit anti-Actin recombinant monoclonal antibody [BLR057F] (A700-057).



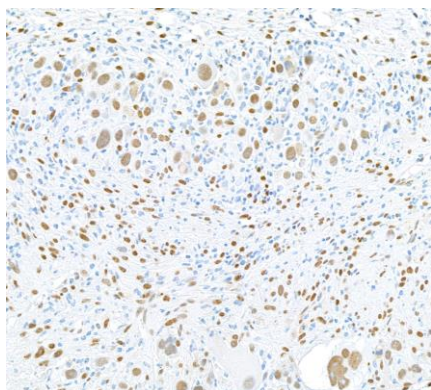
**Detection of human FOX2/RBM9 by western blot of immunoprecipitates.**

*Samples:* Whole cell lysate (1.0 mg per IP reaction; 20% of IP loaded) from HEK293T cells prepared using NETN lysis buffer. *Antibodies:* Rabbit anti-FOX2/RBM9 recombinant monoclonal antibody [BLR215K] (A700-215-T lot 1) used for IP at 20 µl/mg lysate. FOX2/RBM9 was also immunoprecipitated by an antibody against a different epitope of FOX2/RBM9 (BL2440) and a polyclonal antibody against the same epitope of FOX2/RBM9 (A300-864A). For blotting immunoprecipitated FOX2/RBM9, A700-215-T was used at 1:1000. Chemiluminescence with an exposure time of 30 seconds.

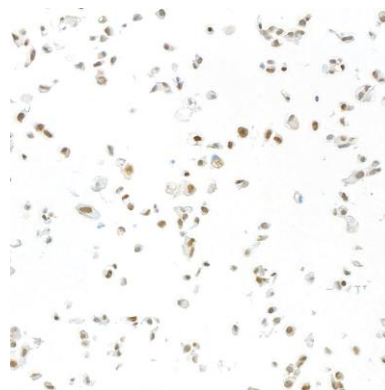


**Detection of human FOX2/RBM9 by immunohistochemistry.**

*Sample:* FFPE section of breast carcinoma. *Antibody:* Rabbit anti-FOX2/RBM9 recombinant monoclonal antibody [BLR215K] (A700-215-T-1). *Secondary:* HRP-conjugated goat anti-rabbit IgG (A120-501P).



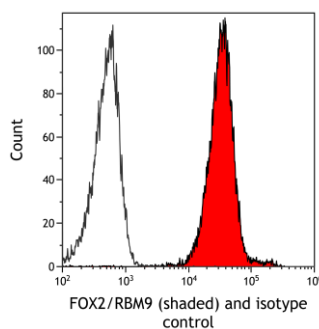
**Detection of mouse FOX2/RBM9 by immunohistochemistry.** *Sample:* FFPE section of RENCA Tumor. *Antibody:* Rabbit anti-FOX2/RBM9 recombinant monoclonal antibody [BLR215K] (A700-215-T-1). *Secondary:* HRP-conjugated goat anti-rabbit IgG (A120-501P).



**Detection of human FOX2/RBM9 by immunocytochemistry.** *Sample:* FFPE section of GaMG cells. *Antibody:* Rabbit anti-FOX2/RBM9 recombinant monoclonal antibody [BLR215K] (A700-215-T-1). *Secondary:* HRP-conjugated goat anti-rabbit IgG (A120-501P).



**Detection of mouse FOX2/RBM9 by immunocytochemistry.** *Sample:* FFPE section of NIH 3T3 cells. *Antibody:* Rabbit anti-FOX2/RBM9 recombinant monoclonal antibody [BLR215K] (A700-215-T-1). *Secondary:* HRP-conjugated goat anti-rabbit IgG (A120-501P).



**Detection of human FOX2/RBM9 (shaded) in Jurkat cells by flow cytometry.** *Antibody:* Rabbit anti-FOX2/RBM9 recombinant monoclonal antibody [BLR215K] (A700-215-T) or isotype control (unshaded). *Secondary:* DyLight® 650-conjugated goat anti-rabbit IgG (A120-101D5).