



# SZABO SCANDIC

Part of Europa Biosite

## Produktinformation



Forschungsprodukte & Biochemikalien



Zellkultur & Verbrauchsmaterial



Diagnostik & molekulare Diagnostik



Laborgeräte & Service

Weitere Information auf den folgenden Seiten!  
See the following pages for more information!



### Lieferung & Zahlungsart

siehe unsere [Liefer- und Versandbedingungen](#)

### Zuschläge

- Mindermengenzuschlag
- Trockeneiszuschlag
- Gefahrgutzuschlag
- Expressversand

### SZABO-SCANDIC HandelsgmbH

Quellenstraße 110, A-1100 Wien

T. +43(0)1 489 3961-0

F. +43(0)1 489 3961-7

[mail@szabo-scandic.com](mailto:mail@szabo-scandic.com)

[www.szabo-scandic.com](http://www.szabo-scandic.com)

[linkedin.com/company/szaboscandic](https://www.linkedin.com/company/szaboscandic) 

# UCHL1 Recombinant Monoclonal Antibody [BLR216K]

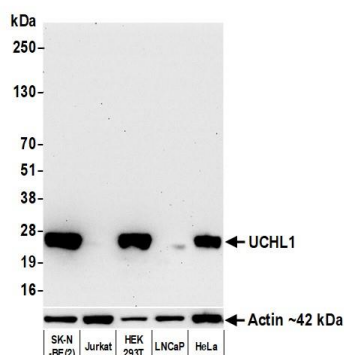
Rabbit Recombinant Monoclonal

Purified Protein ID NP\_004172.2  
Catalog No. A700-216-T GeneID 7345  
Lot No. A700-216-T-1

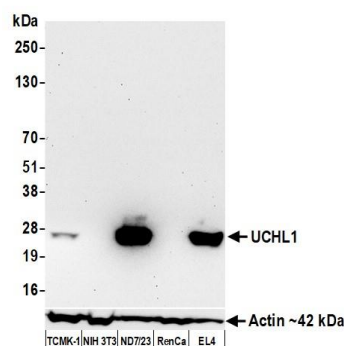
---

<b>APPLICATIONS</b>	WB, IHC, ICC, F
<b>SPECIES REACTIVITY</b>	Human, Mouse
<b>AMOUNT</b>	10 µl (5+ tests)
<b>CONCENTRATION</b>	12.5 µg/ml
<b>STORAGE/SHELF LIFE</b>	2 – 8°C / 1 year from date of receipt
<b>PHYSICAL STATE</b>	Liquid
<b>BUFFER</b>	Borate Buffered Saline (BBS) pH 8.2 with 0.1% BSA and 0.09% Sodium Azide
<b>ISOTYPE</b>	IgG
<b>CLONE #</b>	BLR216K
<b>ORIGIN</b>	USA
<b>PRODUCTION PROCEDURES</b>	Recombinant antibody was purified from cell culture supernatant.  Immunogen was a peptide representing a region between residue 50 and 100 of human Ubiquitin carboxyl-terminal hydrolase isozyme L1 (UCHL1) using the numbering given in entry NP_004172.2 (Gene ID 7345).
<b>APPLICATIONS</b>	Centrifuge tube to remove product from lid. Optimal working dilutions should be determined experimentally by the investigator. Prepare working dilution immediately before use.  Western Blot 1:1,000  Immunohistochemistry 1:100 to 1:500. Epitope retrieval with citrate Buffer pH 6.0 is recommended for FFPE tissue sections.  Immunocytochemistry 1:100 to 1:500. Epitope retrieval with citrate Buffer pH 6.0 is recommended for FFPE cell sections.  Flow Cytometry Fixed in 4% formaldehyde and permeabilized with 90% methanol. 0.5 µl per 1 x 10 <sup>6</sup> cells.
<b>IHC HUMAN CONTROLS</b>	Prostate Carcinoma, Skin Squamous Cell Carcinoma, DU145 Cells, SK-N-BE (2) Cells
<b>IHC MOUSE CONTROLS</b>	Brain, ND7/23 Cells
<b>ADDITIONAL INFO</b>	<a href="https://www.fortislife.com/p/A700-216-T">https://www.fortislife.com/p/A700-216-T</a> Use the link above to view SDS, a current list of citations, and other product specific information.

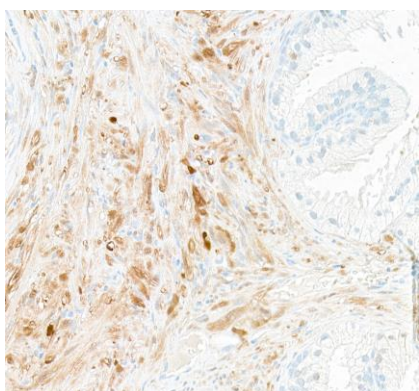
This document certifies that this product has met all of the quality control standards defined by Bethyl Laboratories, Inc.  
Michael Spencer, PhD Date: June 30, 2022



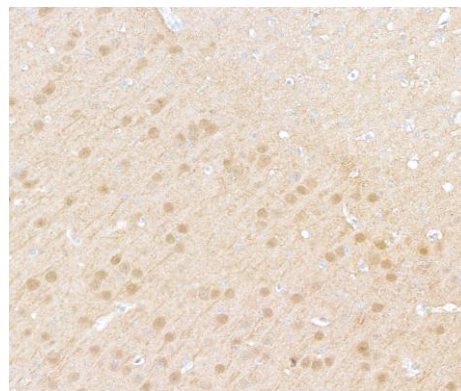
**Detection of human UCHL1 by western blot.** *Samples:* Whole cell lysate (10 µg) from SK-N-BE(2), Jurkat, HEK293T, LNCaP, and HeLa cells prepared using NETN lysis buffer. *Antibody:* Rabbit anti-UCHL1 recombinant monoclonal antibody [BLR216K] (A700-216-T lot 1) used at 1:1000. *Secondary:* HRP-conjugated goat anti-rabbit IgG (A120-101P). Chemiluminescence with an exposure time of 30 seconds. Lower Panel: Rabbit anti-Actin recombinant monoclonal antibody [BLR057F] (A700-057).



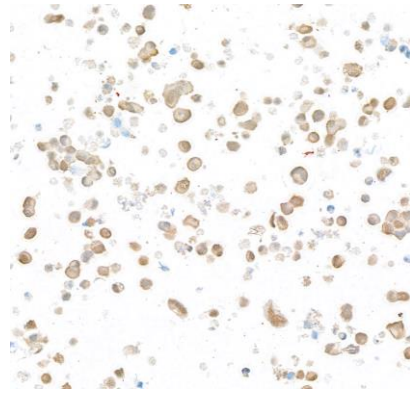
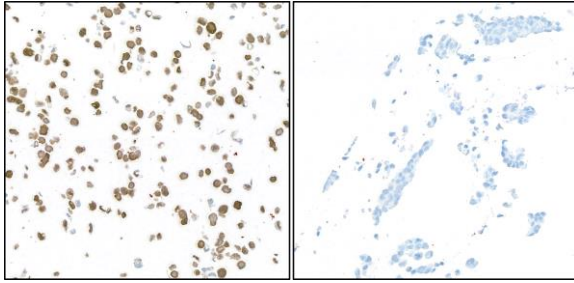
**Detection of mouse UCHL1 by western blot.** *Samples:* Whole cell lysate (50 µg) from TCMK-1, NIH 3T3, ND7/23 (10 µg), RenCa, and EL4 (10 µg) cells prepared using NETN lysis buffer. *Antibody:* Rabbit anti-UCHL1 recombinant monoclonal antibody [BLR216K] (A700-216-T lot 1) used at 1:1000. *Secondary:* HRP-conjugated goat anti-rabbit IgG (A120-101P). Chemiluminescence with an exposure time of 30 seconds. Lower Panel: Rabbit anti-Actin recombinant monoclonal antibody [BLR057F] (A700-057).



**Detection of human UCHL1 by immunohistochemistry.** *Sample:* FFPE section of prostate carcinoma. *Antibody:* Rabbit anti-UCHL1 recombinant monoclonal antibody [BLR216K] (A700-216-T-1). *Secondary:* HRP-conjugated goat anti-rabbit IgG (A120-501P).

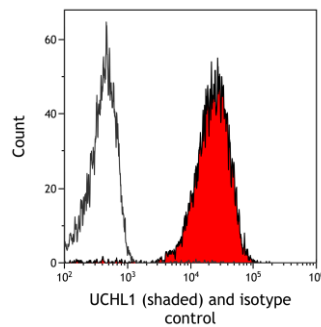


**Detection of mouse UCHL1 by immunohistochemistry.** *Sample:* FFPE section of mouse brain. *Antibody:* Rabbit anti-UCHL1 recombinant monoclonal antibody [BLR216K] (A700-216-T-1). *Secondary:* HRP-conjugated goat anti-rabbit IgG (A120-501P).

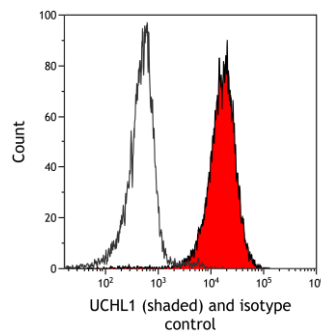


**Detection of human UCHL1 by immunocytochemistry.**  
*Sample:* FFPE section of DU145 cells (left –positive) and LNCaP cells (right – negative). *Antibody:* Rabbit anti-UCHL1 recombinant monoclonal antibody [BLR216K] (A700-216-T-1). *Secondary:* HRP-conjugated goat anti-rabbit IgG (A120-501P).

**Detection of human UCHL1 by immunocytochemistry.**  
*Sample:* FFPE section of ND7/23 cells. *Antibody:* Rabbit anti-UCHL1 recombinant monoclonal antibody [BLR216K] (A700-216-T-1). *Secondary:* HRP-conjugated goat anti-rabbit IgG (A120-501P).



**Detection of human UCHL1 (shaded) in A549 cells by flow cytometry.** *Antibody:* Rabbit anti-UCHL1 recombinant monoclonal antibody [BLR216K] (A700-216-T) or isotype control (unshaded). *Secondary:* DyLight® 650-conjugated goat anti-rabbit IgG (A120-101D5).



**Detection of mouse UCHL1 (shaded) in EL4 cells by flow cytometry.** *Antibody:* Rabbit anti-UCHL1 recombinant monoclonal antibody [BLR216K] (A700-216-T) or isotype control (unshaded). *Secondary:* DyLight® 650-conjugated goat anti-rabbit IgG (A120-101D5).