



SZABO SCANDIC

Part of Europa Biosite

Produktinformation



Forschungsprodukte & Biochemikalien



Zellkultur & Verbrauchsmaterial



Diagnostik & molekulare Diagnostik



Laborgeräte & Service

Weitere Information auf den folgenden Seiten!
See the following pages for more information!



Lieferung & Zahlungsart

siehe unsere [Liefer- und Versandbedingungen](#)

Zuschläge

- Mindermengenzuschlag
- Trockeneiszuschlag
- Gefahrgutzuschlag
- Expressversand

SZABO-SCANDIC HandelsgmbH

Quellenstraße 110, A-1100 Wien

T. +43(0)1 489 3961-0

F. +43(0)1 489 3961-7

mail@szabo-scandic.com

www.szabo-scandic.com

[linkedin.com/company/szaboscandic](https://www.linkedin.com/company/szaboscandic) 

ZEB1 Recombinant Monoclonal Antibody [BLR217K]

Rabbit Recombinant Monoclonal

Purified	Protein ID	NP_001167567.1
Catalog No. A700-217-T	GeneID	6935
Lot No. A700-217-T-1		

APPLICATIONS	WB, IP, IHC, ICC, F
SPECIES REACTIVITY	Human, Mouse
AMOUNT	10 µl (5+ tests)
CONCENTRATION	1000 µg/ml
STORAGE/SHELF LIFE	2 - 8°C / 1 year from date of receipt
PHYSICAL STATE	Liquid
BUFFER	Borate Buffered Saline (BBS) pH 8.2 with 0.09% Sodium Azide, BSA Free
ISOTYPE	IgG
CLONE #	BLR217K
ORIGIN	USA

PRODUCTION PROCEDURES Recombinant antibody was purified from cell culture supernatant.

Immunogen was a peptide representing a region between residue 750 and 800 of human zinc finger E-box-binding homeobox 1 (ZEB1) using the numbering given in entry NP_001167567.1 (Gene ID 6935).

APPLICATIONS Centrifuge tube to remove product from lid. Optimal working dilutions should be determined experimentally by the investigator. Prepare working dilution immediately before use.

Western Blot	1:1,000
Immunoprecipitation	6 µl/1 mg lysate
Immunohistochemistry	1:100 to 1:500. Epitope retrieval with citrate Buffer pH 6.0 is recommended for FFPE tissue sections.
Immunocytochemistry	1:100 to 1:500. Epitope retrieval with citrate Buffer pH 6.0 is recommended for FFPE cell sections.
Flow Cytometry	Fixed in 4% formaldehyde and permeabilized with 90% methanol. 0.25 µl per 1 x 10 ⁶ cells.

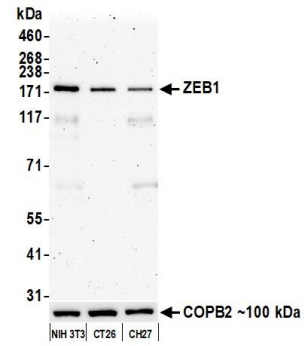
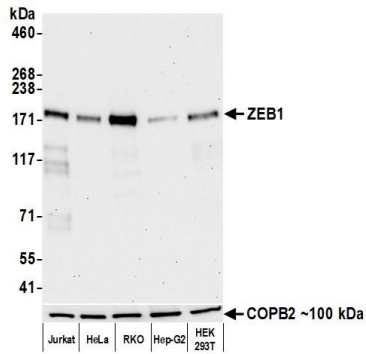
IHC HUMAN CONTROLS Bladder Cell Carcinoma, Breast Carcinoma, Colon Carcinoma, Glioblastoma, Prostate Carcinoma, ND7/23 Cells, RKO Cells, SK-N-BE (2) Cells, SK-N-SH Cells

IHC MOUSE CONTROLS Brain, RenCa Tumor, Uterus, EL-4 cells

ADDITIONAL INFO <https://www.fortislife.com/p/A700-217-T>

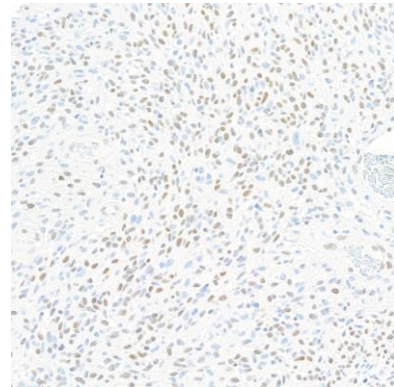
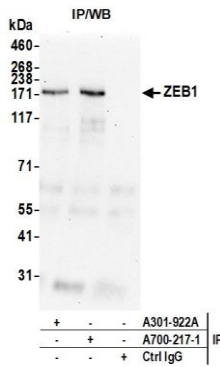
Use the link above to view SDS, a current list of citations, and other product specific information.

This document certifies that this product has met all of the quality control standards defined by Bethyl Laboratories, Inc.
Michael Spencer, PhD Date: June 30, 2022



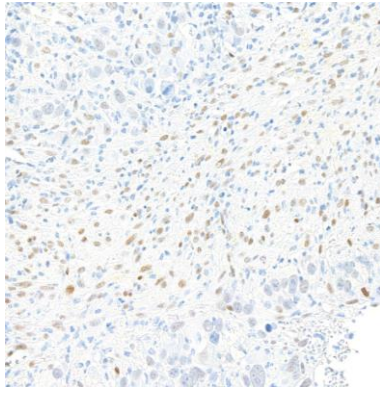
Detection of human ZEB1 by western blot. *Samples:* Whole cell lysate (10 µg) from Jurkat, HeLa, RKO, Hep-G2, and HEK293T cells prepared using NETN lysis buffer. *Antibody:* Rabbit anti-ZEB1 recombinant monoclonal antibody [BLR217K] (A700-217-T lot 1) used at 1:1000. *Secondary:* HRP-conjugated goat anti-rabbit IgG (A120-101P). Chemiluminescence with an exposure time of 30 seconds. Lower Panel: Rabbit anti-COPB2 antibody (A304-523A).

Detection of mouse ZEB1 by western blot. *Samples:* Whole cell lysate (10 µg) from NIH 3T3, CT26, and CH27 cells prepared using NETN lysis buffer. *Antibody:* Rabbit anti-ZEB1 recombinant monoclonal antibody [BLR217K] (A700-217-T lot 1) used at 1:1000. *Secondary:* HRP-conjugated goat anti-rabbit IgG (A120-101P). Chemiluminescence with an exposure time of 3 minutes. Lower Panel: Rabbit anti-COPB2 antibody (A304-523A).



Detection of human ZEB1 by western blot of immunoprecipitates. *Samples:* Whole cell lysate (1.0 mg per IP reaction; 5% of IP loaded) from 293T cells prepared using NETN lysis buffer. *Antibodies:* Rabbit anti-ZEB1 recombinant monoclonal antibody [BLR217K] (A700-217-T lot 1) used for IP at 6 µl/mg lysate. ZEB1 was also immunoprecipitated by a second antibody against a different epitope of ZEB1 (A301-922A). For blotting immunoprecipitated ZEB1, A700-217-T was used at 1:1000. Chemiluminescence with an exposure time of 30 seconds.

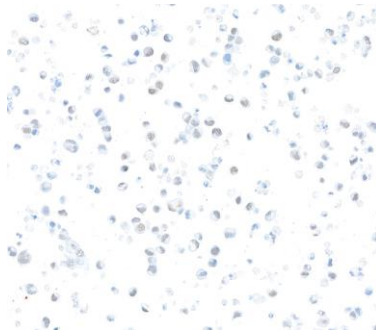
Detection of human ZEB1 by immunohistochemistry. *Sample:* FFPE section of glioblastoma. *Antibody:* Rabbit anti-ZEB1 recombinant monoclonal antibody [BLR217K] (A700-217-T-1). *Secondary:* HRP-conjugated goat anti-rabbit IgG (A120-501P).



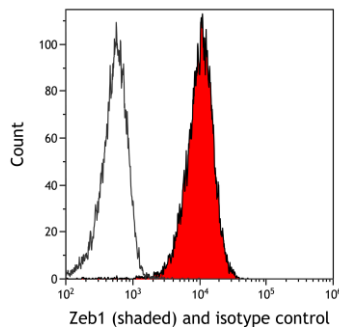
Detection of mouse ZEB1 by immunohistochemistry.
Sample: FFPE section of mouse Renca tumor. *Antibody:* Rabbit anti-ZEB1 recombinant monoclonal antibody [BLR217K] (A700-217-T-1). *Secondary:* HRP-conjugated goat anti-rabbit IgG (A120-501P).



Detection of human ZEB1 by immunocytochemistry.
Sample: FFPE section of RKO cells. *Antibody:* Rabbit anti-ZEB1 recombinant monoclonal antibody [BLR217K] (A700-217-T-1). *Secondary:* HRP-conjugated goat anti-rabbit IgG (A120-501P).



Detection of mouse ZEB1 by immunocytochemistry. *Sample:* FFPE section of ND7/23 cells. *Antibody:* Rabbit anti-ZEB1 recombinant monoclonal antibody [BLR217K] (A700-217-T-1). *Secondary:* HRP-conjugated goat anti-rabbit IgG (A120-501P).



Detection of human Zeb1 (shaded) in Jurkat cells by flow cytometry. *Antibody:* Rabbit anti-Zeb1 recombinant monoclonal [BLR217K] (A700-217-T) or isotype control (unshaded). *Secondary:* DyLight® 650-conjugated goat anti-rabbit IgG (A120-101D5).