



# SZABO SCANDIC

Part of Europa Biosite

## Produktinformation



Forschungsprodukte & Biochemikalien



Zellkultur & Verbrauchsmaterial



Diagnostik & molekulare Diagnostik



Laborgeräte & Service

Weitere Information auf den folgenden Seiten!  
See the following pages for more information!



### Lieferung & Zahlungsart

siehe unsere [Liefer- und Versandbedingungen](#)

### Zuschläge

- Mindermengenzuschlag
- Trockeneiszuschlag
- Gefahrgutzuschlag
- Expressversand

### SZABO-SCANDIC HandelsgmbH

Quellenstraße 110, A-1100 Wien

T. +43(0)1 489 3961-0

F. +43(0)1 489 3961-7

[mail@szabo-scandic.com](mailto:mail@szabo-scandic.com)

[www.szabo-scandic.com](http://www.szabo-scandic.com)

[linkedin.com/company/szaboscandic](https://www.linkedin.com/company/szaboscandic) 

# CD5 Recombinant Monoclonal Antibody [BLR218K]

Rabbit Recombinant Monoclonal

Purified	Protein ID	NP_055022.2
Catalog No. A700-218	GeneID	921
Lot No. A700-218-1		

---

<b>APPLICATIONS</b>	WB, IHC, ICC
<b>SPECIES REACTIVITY</b>	Human
<b>AMOUNT</b>	100 µl (50+ tests)
<b>CONCENTRATION</b>	500 µg/ml
<b>STORAGE/SHELF LIFE</b>	2 – 8°C / 1 year from date of receipt
<b>PHYSICAL STATE</b>	Liquid
<b>BUFFER</b>	Borate Buffered Saline (BBS) pH 8.2 with 0.1% BSA and 0.09% Sodium Azide
<b>ISOTYPE</b>	IgG
<b>CLONE #</b>	BLR218K
<b>ORIGIN</b>	USA
<b>PRODUCTION PROCEDURES</b>	Recombinant antibody was purified from cell culture supernatant.

Immunogen was a recombinant protein representing the extracellular domain of human T-cell surface glycoprotein CD5 (residues 25–371, NP\_055022.2).

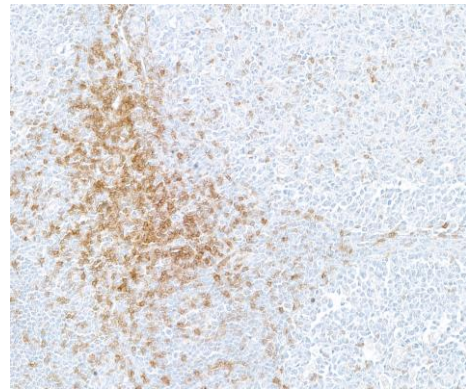
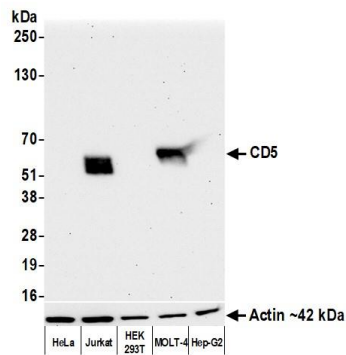
**APPLICATIONS** Centrifuge tube to remove product from lid. Optimal working dilutions should be determined experimentally by the investigator. Prepare working dilution immediately before use.

Western Blot	1:1,000
Immunohistochemistry	1:100 to 1:500. Epitope retrieval with citrate Buffer pH 6.0 is recommended for FFPE tissue sections.
Immunocytochemistry	1:100 to 1:500. Epitope retrieval with citrate Buffer pH 6.0 is recommended for FFPE cell sections.

**IHC HUMAN CONTROLS** Appendix, Spleen, Tonsil, Tumor-infiltrating Lymphocytes, C5/MJ Cells, HH Cells, MJ Cells, MOLT-4 Cells

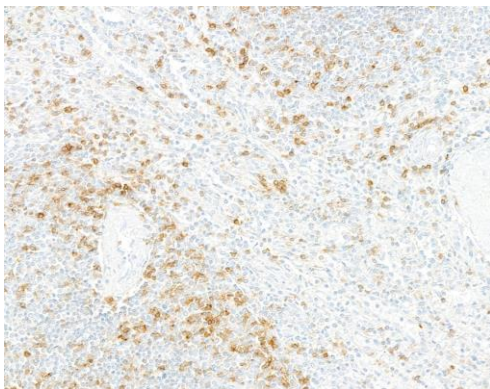
**ADDITIONAL INFO** <https://www.fortislife.com/p/A700-218>  
Use the link above to view SDS, a current list of citations, and other product specific information.

This document certifies that this product has met all of the quality control standards defined by Bethyl Laboratories, Inc.  
Michael Spencer, PhD Date: June 30, 2022

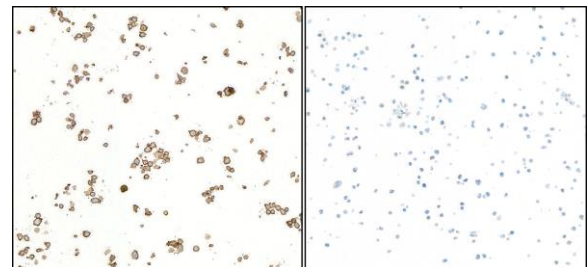


**Detection of human CD5 by western blot.** *Samples:* Whole cell lysate (10 µg) from HeLa, Jurkat, HEK293T, MOLT-4, and Hep-G2 cells prepared using NETN lysis buffer. *Antibody:* Rabbit anti-CD5 recombinant monoclonal antibody [BLR218K] (A700-218 lot 1) used at 1:1000. *Secondary:* HRP-conjugated goat anti-rabbit IgG (A120-101P). Chemiluminescence with an exposure time of 30 seconds. Lower Panel: Rabbit anti-Actin recombinant monoclonal antibody [BLR057F] (A700-057).

**Detection of human CD5 by immunohistochemistry.** *Sample:* FFPE section of tonsil. *Antibody:* Rabbit anti-CD5 recombinant monoclonal antibody [BLR218K] (A700-218-1). *Secondary:* HRP-conjugated goat anti-rabbit IgG (A120-501P).



**Detection of human CD5 by immunohistochemistry.** *Sample:* FFPE section of spleen. *Antibody:* Rabbit anti-CD5 recombinant monoclonal antibody [BLR218K] (A700-218-1). *Secondary:* HRP-conjugated goat anti-rabbit IgG (A120-501P).



**Detection of human CD5 by immunocytochemistry.** *Sample:* FFPE section of HH cells (left – positive) and Raji cells (right – negative). *Antibody:* Rabbit anti-CD5 recombinant monoclonal antibody [BLR218K] (A700-218-1). *Secondary:* HRP-conjugated goat anti-rabbit IgG (A120-501P).