



# SZABO SCANDIC

Part of Europa Biosite

## Produktinformation



Forschungsprodukte & Biochemikalien



Zellkultur & Verbrauchsmaterial



Diagnostik & molekulare Diagnostik



Laborgeräte & Service

Weitere Information auf den folgenden Seiten!  
See the following pages for more information!



### Lieferung & Zahlungsart

siehe unsere [Liefer- und Versandbedingungen](#)

### Zuschläge

- Mindermengenzuschlag
- Trockeneiszuschlag
- Gefahrgutzuschlag
- Expressversand

### SZABO-SCANDIC HandelsgmbH

Quellenstraße 110, A-1100 Wien

T. +43(0)1 489 3961-0

F. +43(0)1 489 3961-7

[mail@szabo-scandic.com](mailto:mail@szabo-scandic.com)

[www.szabo-scandic.com](http://www.szabo-scandic.com)

[linkedin.com/company/szaboscandic](https://www.linkedin.com/company/szaboscandic) 

# CD5 Recombinant Monoclonal Antibody [BLR219K]

Rabbit Recombinant Monoclonal

Purified	Protein ID	NP_055022.2
Catalog No. A700-219-T	GeneID	921
Lot No. A700-219-T-1		

---

<b>APPLICATIONS</b>	WB, IP, IHC, ICC, F
<b>SPECIES REACTIVITY</b>	Human, Mouse
<b>AMOUNT</b>	10 µl (5+ tests)
<b>CONCENTRATION</b>	50 µg/ml
<b>STORAGE/SHELF LIFE</b>	2 – 8°C / 1 year from date of receipt
<b>PHYSICAL STATE</b>	Liquid
<b>BUFFER</b>	Borate Buffered Saline (BBS) pH 8.2 with 0.1% BSA and 0.09% Sodium Azide
<b>ISOTYPE</b>	IgG
<b>CLONE #</b>	BLR219K
<b>ORIGIN</b>	USA
<b>PRODUCTION PROCEDURES</b>	Recombinant antibody was purified from cell culture supernatant.

Immunogen was a peptide representing a region between residue 445 and the C-terminus (residue 495) of human T-cell surface glycoprotein CD5 using the numbering given in entry NP\_055022.2 (Gene ID 921).

**APPLICATIONS** Centrifuge tube to remove product from lid. Optimal working dilutions should be determined experimentally by the investigator. Prepare working dilution immediately before use.

Western Blot	1:1,000
Immunoprecipitation	20 µl/1 mg lysate
Immunohistochemistry	1:100 to 1:500. Epitope retrieval with citrate Buffer pH 6.0 is recommended for FFPE tissue sections.
Immunocytochemistry	1:100 to 1:500. Epitope retrieval with citrate Buffer pH 6.0 is recommended for FFPE cell sections.
Flow Cytometry	Fixed in 4% formaldehyde and permeabilized with 90% methanol. 0.5 µl per 1 x 10 <sup>6</sup> cells.

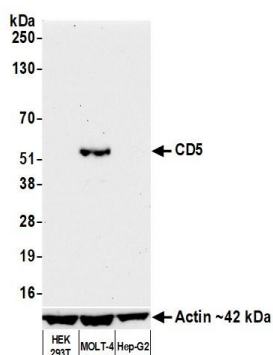
**IHC HUMAN CONTROLS** Appendix, Spleen, Tonsil, Tumor-infiltrating Lymphocytes, C5/MJ Cells, HH Cells, MJ Cells, MOLT-4 Cells

**IHC MOUSE CONTROLS** Spleen, Thymus, EL-4 cells

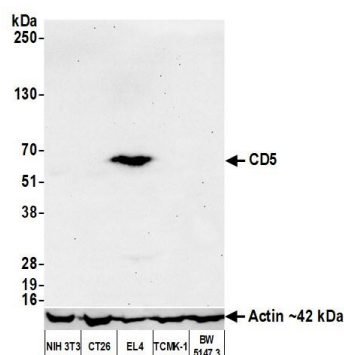
**ADDITIONAL INFO** <https://www.fortislife.com/p/A700-219-T>

Use the link above to view SDS, a current list of citations, and other product specific information.

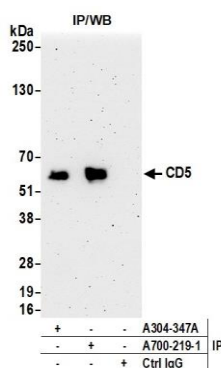
This document certifies that this product has met all of the quality control standards defined by Bethyl Laboratories, Inc.  
Michael Spencer, PhD Date: June 30, 2022



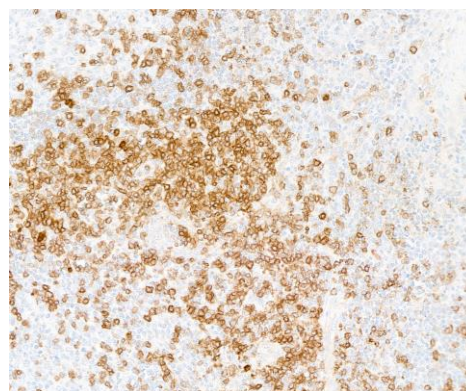
**Detection of human CD5 by western blot.** *Samples:* Whole cell lysate (50 µg) from HEK293T, MOLT-4, and Hep-G2 cells prepared using NETN lysis buffer. *Antibody:* Rabbit anti-CD5 recombinant monoclonal antibody [BLR219K] (A700-219-T lot 1) used at 1:1000. *Secondary:* HRP-conjugated goat anti-rabbit IgG (A120-101P). Chemiluminescence with an exposure time of 30 seconds. Lower Panel: Rabbit anti-Actin recombinant monoclonal antibody [BLR057F] (A700-057).



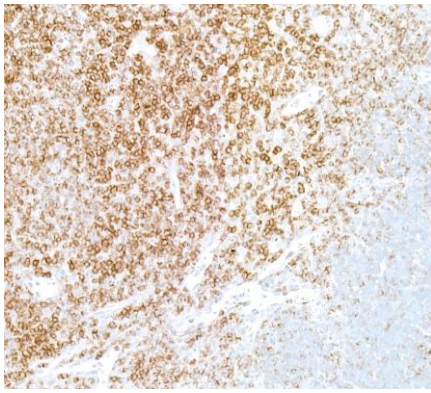
**Detection of mouse CD5 by western blot.** *Samples:* Whole cell lysate (50 µg) from NIH 3T3, CT26, EL4, TCMK-1, and BW5147.3 cells prepared using NETN lysis buffer. *Antibody:* Rabbit anti-CD5 recombinant monoclonal antibody [BLR219K] (A700-219-T lot 1) used at 1:1000. *Secondary:* HRP-conjugated goat anti-rabbit IgG (A120-101P). Chemiluminescence with an exposure time of 30 seconds. Lower Panel: Rabbit anti-Actin recombinant monoclonal antibody [BLR057F] (A700-057).



**Detection of human CD5 by western blot of immunoprecipitates.** *Samples:* Whole cell lysate (1.0 mg per IP reaction; 20% of IP loaded) from MOLT-4 cells prepared using NETN lysis buffer. *Antibodies:* Rabbit anti-CD5 recombinant monoclonal antibody [BLR219K] (A700-219-T lot 1) used for IP at 20 µl/mg lysate. CD5 was also immunoprecipitated by a polyclonal antibody against the same epitope of CD5 (A304-347A). For blotting immunoprecipitated CD5, A700-219-T was used at 1:1000. Chemiluminescence with an exposure time of 3 minutes.



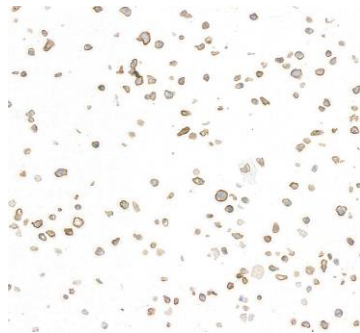
**Detection of human CD5 by immunohistochemistry.** *Sample:* FFPE section of tonsil. *Antibody:* Rabbit anti-CD5 recombinant monoclonal antibody [BLR219K] (A700-219-T-1). *Secondary:* HRP-conjugated goat anti-rabbit IgG (A120-501P).



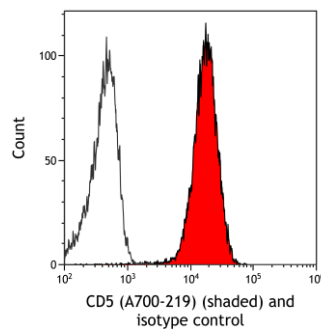
**Detection of mouse CD5 by immunohistochemistry.**  
*Sample:* FFPE section of mouse thymus. *Antibody:* Rabbit anti-CD5 recombinant monoclonal antibody [BLR219K] (A700-219-T-1). *Secondary:* HRP-conjugated goat anti-rabbit IgG (A120-501P).



**Detection of human CD5 by immunocytochemistry.**  
*Sample:* FFPE section of HH cells. *Antibody:* Rabbit anti-CD5 recombinant monoclonal antibody [BLR219K] (A700-219-T-1). *Secondary:* HRP-conjugated goat anti-rabbit IgG (A120-501P).



**Detection of mouse CD5 by immunocytochemistry.** *Sample:* FFPE section of EL4 cells. *Antibody:* Rabbit anti-CD5 recombinant monoclonal antibody [BLR219K] (A700-219-T-1). *Secondary:* HRP-conjugated goat anti-rabbit IgG (A120-501P).



**Detection of human CD5 (shaded) in Jurkat cells by flow cytometry.** *Antibody:* Rabbit anti-CD5 recombinant monoclonal antibody [BLR219K] (A700-219-T) or isotype control (unshaded). *Secondary:* DyLight® 650-conjugated goat anti-rabbit IgG (A120-101D5).