



# SZABO SCANDIC

Part of Europa Biosite

## Produktinformation



Forschungsprodukte & Biochemikalien



Zellkultur & Verbrauchsmaterial



Diagnostik & molekulare Diagnostik



Laborgeräte & Service

Weitere Information auf den folgenden Seiten!  
See the following pages for more information!



### Lieferung & Zahlungsart

siehe unsere [Liefer- und Versandbedingungen](#)

### Zuschläge

- Mindermengenzuschlag
- Trockeneiszuschlag
- Gefahrgutzuschlag
- Expressversand

### SZABO-SCANDIC HandelsgmbH

Quellenstraße 110, A-1100 Wien

T. +43(0)1 489 3961-0

F. +43(0)1 489 3961-7

[mail@szabo-scandic.com](mailto:mail@szabo-scandic.com)

[www.szabo-scandic.com](http://www.szabo-scandic.com)

[linkedin.com/company/szaboscandic](https://www.linkedin.com/company/szaboscandic) 

# AXL Recombinant Monoclonal Antibody [BLR222K]

Rabbit Recombinant Monoclonal

Purified		RefSeq ID	NP_068713.2
Catalog No.	A700-222	Uniprot ID	P30530
Lot No.	A700-222-1	GeneID	558

<b>APPLICATIONS</b>	WB, IP, ICC, Flow Cyt
<b>SPECIES REACTIVITY</b>	Human, Mouse
<b>AMOUNT</b>	100 µl (50+ tests)
<b>CONCENTRATION</b>	1000 µg/ml
<b>STORAGE/SHELF LIFE</b>	2 – 8°C / 1 year from date of receipt
<b>PHYSICAL STATE</b>	Liquid
<b>BUFFER</b>	Borate Buffered Saline (BBS) pH 8.2 with 0.09% Sodium Azide, BSA Free
<b>ISOTYPE</b>	IgG
<b>CLONE #</b>	BLR222K
<b>ORIGIN</b>	USA
<b>PRODUCTION PROCEDURES</b>	Recombinant antibody was purified from cell culture supernatant.

Immunogen was a recombinant protein representing the extracellular domain of human AXL (aka tyrosine-protein kinase receptor UFO; residues 33-440, NP\_068713.2).

**APPLICATIONS** Centrifuge tube to remove product from lid. Optimal working dilutions should be determined experimentally by the investigator. Prepare working dilution immediately before use.

Western Blot	1:1,000
Immunoprecipitation	6 µl/1 mg lysate
Immunocytochemistry	1:100 to 1:500. Epitope retrieval with citrate buffer pH 6.0 is recommended for FFPE cell sections.
Flow Cytometry	Fixed in 4% formaldehyde and permeabilized with 90% methanol. 0.5 µl per 1 x 10 <sup>6</sup> cells.

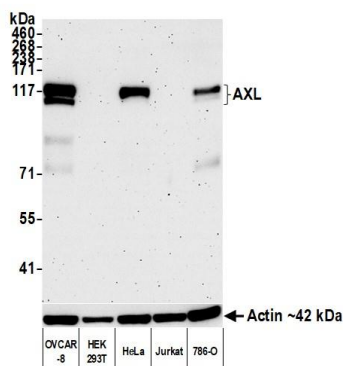
**IHC HUMAN CONTROLS** DU145 Cells, GaMG Cells, HDLM-2 Cells, HOP-92 Cells, OVCAR-8 Cells

**IHC MOUSE CONTROLS** AML12 Cells, CT26 cells, TCMK Cells

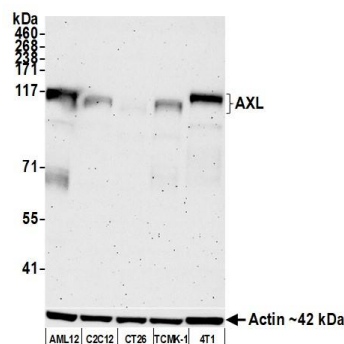
**ADDITIONAL INFO** <https://www.fortislife.com/p/A700-222>

Use the link above to view SDS, a current list of citations, and other product specific information.

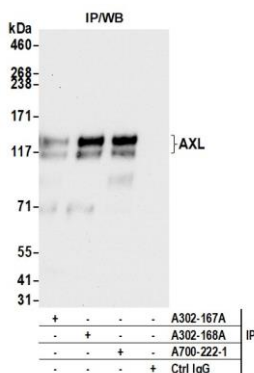
This document certifies that this product has met all of the quality control standards defined by Bethyl Laboratories, Inc.  
Michael Spencer, PhD Date: September 29, 2022



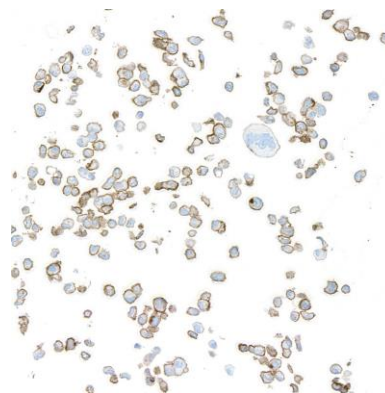
**Detection of human AXL by western blot.** *Samples:* Whole cell lysate (10 µg) from OVCAR-8, HEK293T, HeLa, Jurkat, and 786-O cells prepared using NETN lysis buffer. *Antibody:* Rabbit anti-AXL recombinant monoclonal antibody [BLR222K] (A700-222 lot 1) used at 1:1000. *Secondary:* HRP-conjugated goat anti-rabbit IgG (A120-101P). Chemiluminescence with an exposure time of 3 minutes.



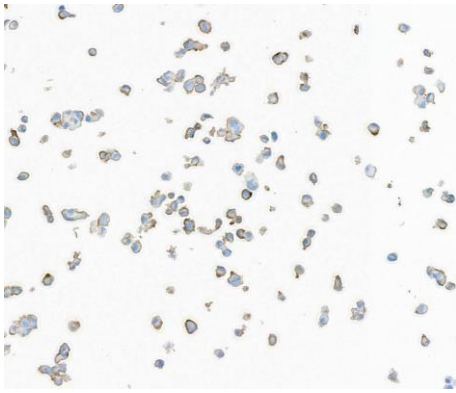
**Detection of mouse AXL by western blot.** *Samples:* Whole cell lysate (25 µg) from AML12, C2C12, CT26, TCMK-1, and 4T1 cells prepared using NETN lysis buffer. *Antibody:* Rabbit anti-AXL recombinant monoclonal antibody [BLR222K] (A700-222 lot 1) used at 1:1000. *Secondary:* HRP-conjugated goat anti-rabbit IgG (A120-101P). Chemiluminescence with an exposure time of 3 minutes. Lower Panel: Rabbit anti-Actin recombinant monoclonal antibody [BLR057F] (A700-057).



**Detection of human AXL by western blot of immunoprecipitates.** *Samples:* Whole cell lysate (1.0 mg per IP reaction; 20% of IP loaded) from OVCAR-8 cells prepared using NETN lysis buffer. *Antibodies:* Rabbit anti-AXL recombinant monoclonal antibody [BLR222K] (A700-222 lot 1) used for IP at 6 µl/mg lysate. AXL was also immunoprecipitated by an antibody against a different epitope of AXL (A302-167A) and a polyclonal antibody against the same epitope of AXL (A302-168A). For blotting immunoprecipitated AXL, A700-222 was used at 1:1000. Chemiluminescence with an exposure time of 10 seconds.

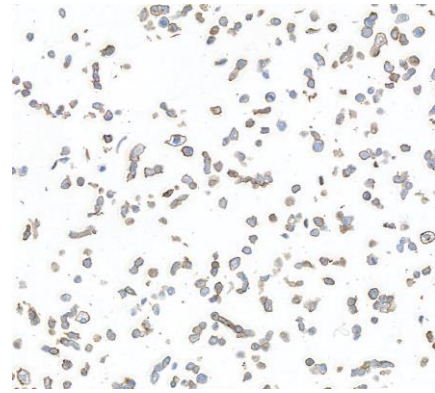


**Detection of human AXL by immunocytochemistry.** *Sample:* FFPE section of DU145 cells. *Antibody:* Rabbit anti-AXL recombinant monoclonal antibody [BLR222K] (A700-222-1). *Secondary:* HRP-conjugated goat anti-rabbit IgG (A120-501P).



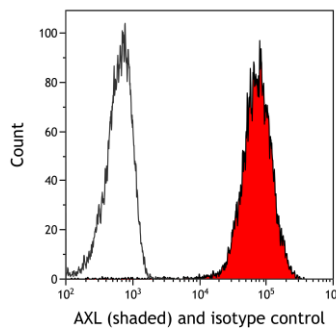
**Detection of human AXL by immunocytochemistry.**

*Sample:* FFPE section of HDLM-2 cells. *Antibody:* Rabbit anti-AXL recombinant monoclonal antibody [BLR222K] (A700-222-1). *Secondary:* HRP-conjugated goat anti-rabbit IgG (A120-501P).



**Detection of mouse AXL by immunocytochemistry.**

*Sample:* FFPE section of AML12 cells. *Antibody:* Rabbit anti-AXL recombinant monoclonal antibody [BLR222K] (A700-222-1). *Secondary:* HRP-conjugated goat anti-rabbit IgG (A120-501P).



**Detection of human AXL (shaded) in OVCAR8 cells by flow cytometry.** *Antibody:* Rabbit anti-AXL recombinant monoclonal antibody [BLR222K] (A700-222) or isotype control (unshaded). *Secondary:* DyLight® 650-conjugated goat anti-rabbit IgG (A120-101D5).