



# SZABO SCANDIC

Part of Europa Biosite

## Produktinformation



Forschungsprodukte & Biochemikalien



Zellkultur & Verbrauchsmaterial



Diagnostik & molekulare Diagnostik



Laborgeräte & Service

Weitere Information auf den folgenden Seiten!  
See the following pages for more information!



### Lieferung & Zahlungsart

siehe unsere [Liefer- und Versandbedingungen](#)

### Zuschläge

- Mindermengenzuschlag
- Trockeneiszuschlag
- Gefahrgutzuschlag
- Expressversand

### SZABO-SCANDIC HandelsgmbH

Quellenstraße 110, A-1100 Wien

T. +43(0)1 489 3961-0

F. +43(0)1 489 3961-7

[mail@szabo-scandic.com](mailto:mail@szabo-scandic.com)

[www.szabo-scandic.com](http://www.szabo-scandic.com)

[linkedin.com/company/szaboscandic](https://www.linkedin.com/company/szaboscandic) 

# Neurofilament-L Recombinant Monoclonal Antibody [BLR224K]

Rabbit Recombinant Monoclonal

Purified		RefSeq ID	NP_006149.2
Catalog No.	A700-224-T	Uniprot ID	P07196
Lot No.	A700-224-T-1	GeneID	4747

**APPLICATIONS** WB, IP, IHC, ICC

**SPECIES REACTIVITY** Human, Rat

**AMOUNT** 10 µl (5+ tests)

**CONCENTRATION** 250 µg/ml

**STORAGE/SHELF LIFE** 2 - 8°C / 1 year from date of receipt

**PHYSICAL STATE** Liquid

**BUFFER** Borate Buffered Saline (BBS) pH 8.2 with 0.1% BSA and 0.09% Sodium Azide

**ISOTYPE** IgG

**CLONE #** BLR224K

**ORIGIN** USA

**PRODUCTION PROCEDURES** Recombinant antibody was purified from cell culture supernatant.

Immunogen was a peptide representing a region between residue 150 and 200 of human Neurofilament light using the numbering given in entry NP\_006149.2 (Gene ID 4747).

**APPLICATIONS** Centrifuge tube to remove product from lid. Optimal working dilutions should be determined experimentally by the investigator. Prepare working dilution immediately before use.

Western Blot 1:1,000

Immunoprecipitation 20 µl/1 mg lysate

Immunohistochemistry 1:100 to 1:500. Epitope retrieval with citrate buffer pH 6.0 or Tris-EDTA pH 9.0 is recommended for FFPE tissue sections.

Immunocytochemistry 1:100 to 1:500. Epitope retrieval with citrate buffer pH 6.0 is recommended for FFPE cell sections.

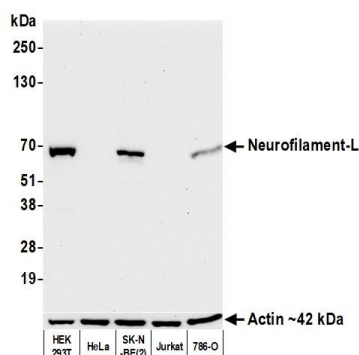
**IHC HUMAN CONTROLS** Brain, Glioblastoma, B35 Cells, SK-N-BE (2) Cells, U-251MG Cells

**IHC MOUSE CONTROLS** Brain

**ADDITIONAL INFO** <https://www.fortislife.com/p/A700-224-T>

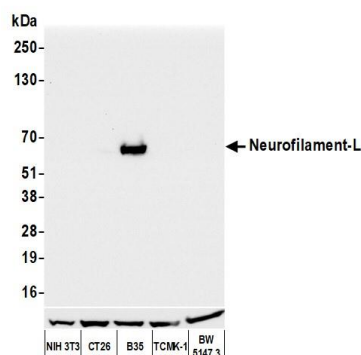
Use the link above to view SDS, a current list of citations, and other product specific information.

This document certifies that this product has met all of the quality control standards defined by Bethyl Laboratories, Inc.  
Michael Spencer, PhD Date: September 29, 2022



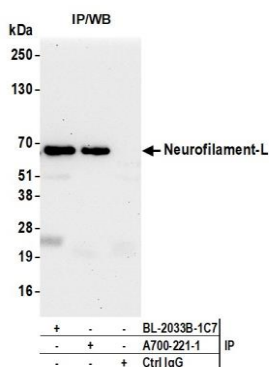
**Detection of human Neurofilament-L by western blot.**

*Samples:* Whole cell lysate (25 µg) from HEK293T, HeLa, SK-N-BE(2), Jurkat, and 786-O cells prepared using NETN lysis buffer. *Antibody:* Rabbit anti-Neurofilament-L recombinant monoclonal antibody [BLR224K] (A700-224 lot 1) used at 1:1000. *Secondary:* HRP-conjugated goat anti-rabbit IgG (A120-101P). Chemiluminescence with an exposure time of 10 seconds. Lower Panel: Rabbit anti-Actin recombinant monoclonal antibody [BLR057F] (A700-057).



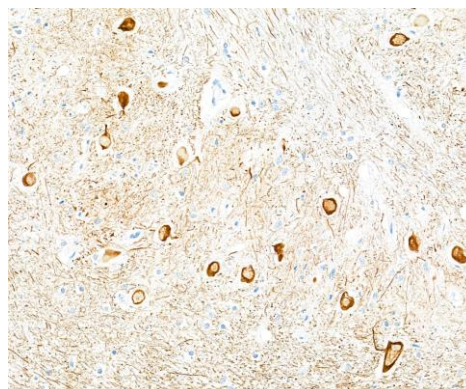
**Detection of mouse and rat Neurofilament-L by western blot.**

*Samples:* Whole cell lysate (50 µg) from NIH 3T3, CT26, B35, TCMK-1, and BW5147.3 cells prepared using NETN lysis buffer. *Antibody:* Rabbit anti-Neurofilament-L recombinant monoclonal antibody [BLR224K] (A700-224 lot 1) used at 1:1000. *Secondary:* HRP-conjugated goat anti-rabbit IgG (A120-101P). Chemiluminescence with an exposure time of 3 seconds.



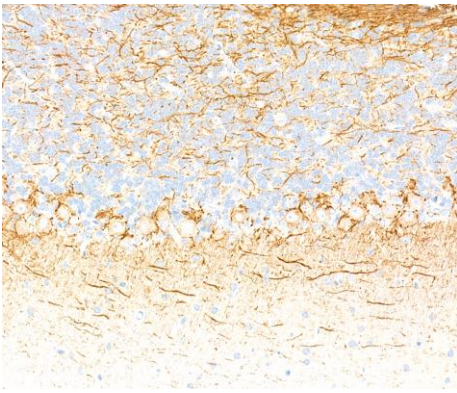
**Detection of human Neurofilament-L by western blot of immunoprecipitates.**

*Samples:* Whole cell lysate (1.0 mg per IP reaction; 20% of IP loaded) from 293T cells prepared using NETN lysis buffer. *Antibodies:* Rabbit anti-Neurofilament-L recombinant monoclonal antibody [BLR221K] (A700-224 lot 1) used for IP at 20 µl/mg lysate. Neurofilament-L was also immunoprecipitated by a second antibody against a different epitope of Neurofilament-L (BL-2033B-1C7). For blotting immunoprecipitated Neurofilament-L, A700-224 was used at 1:1000. Chemiluminescence with an exposure time of 30 seconds.

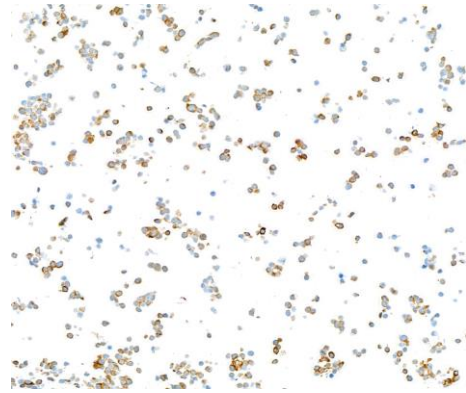


**Detection of human Neurofilament-L by immunohistochemistry.**

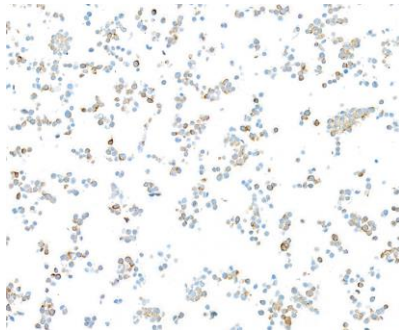
*Sample:* FFPE section of human medulla. *Antibody:* Rabbit anti-Neurofilament-L recombinant monoclonal antibody [BLR224K] (A700-224-1). *Secondary:* HRP-conjugated goat anti-rabbit IgG (A120-501P).



**Detection of mouse Neurofilament-L by immunohistochemistry.** *Sample:* FFPE section of mouse cerebellum. *Antibody:* Rabbit anti-Neurofilament-L recombinant monoclonal antibody [BLR224K] (A700-224-1). *Secondary:* HRP-conjugated goat anti-rabbit IgG (A120-501P).



**Detection of human Neurofilament-L by immunocytochemistry.** *Sample:* FFPE section of SK-N-BE(2) cells. *Antibody:* Rabbit anti-Neurofilament-L recombinant monoclonal antibody [BLR224K] (A700-224-1). *Secondary:* HRP-conjugated goat anti-rabbit IgG (A120-501P).



**Detection of rat Neurofilament-L by immunocytochemistry.** *Sample:* FFPE section of B35 cells. *Antibody:* Rabbit anti-Neurofilament-L recombinant monoclonal antibody [BLR224K] (A700-224-1). *Secondary:* HRP-conjugated goat anti-rabbit IgG (A120-501P).