



SZABO SCANDIC

Part of Europa Biosite

Produktinformation



Forschungsprodukte & Biochemikalien



Zellkultur & Verbrauchsmaterial



Diagnostik & molekulare Diagnostik



Laborgeräte & Service

Weitere Information auf den folgenden Seiten!
See the following pages for more information!



Lieferung & Zahlungsart

siehe unsere [Liefer- und Versandbedingungen](#)

Zuschläge

- Mindermengenzuschlag
- Trockeneiszuschlag
- Gefahrgutzuschlag
- Expressversand

SZABO-SCANDIC HandelsgmbH

Quellenstraße 110, A-1100 Wien

T. +43(0)1 489 3961-0

F. +43(0)1 489 3961-7

mail@szabo-scandic.com

www.szabo-scandic.com

[linkedin.com/company/szaboscandic](https://www.linkedin.com/company/szaboscandic) 

PD-L1 Recombinant Monoclonal Antibody [BLR227K]

Rabbit Recombinant Monoclonal

Purified		RefSeq ID	NP_054862.1
Catalog No.	A700-227-T	Uniprot ID	Q9NZQ7
Lot No.	A700-227-T-1	GeneID	29126

APPLICATIONS WB, IP, Flow Cyt

SPECIES REACTIVITY Human

AMOUNT 20 µl (2 blots)

CONCENTRATION 100 µg/ml

STORAGE/SHELF LIFE 2 – 8°C / 1 year from date of receipt

PHYSICAL STATE Liquid

BUFFER Borate Buffered Saline (BBS) pH 8.2 with 0.1% BSA and 0.09% Sodium Azide

ISOTYPE IgG

CLONE # BLR227K

ORIGIN USA

PRODUCTION PROCEDURES Recombinant antibody was purified from cell culture supernatant.

Immunogen was a recombinant protein representing the extracellular domain of human Programmed cell death 1 ligand 1 (residues 19–238, NP_054862.1).

APPLICATIONS Centrifuge tube to remove product from lid. Optimal working dilutions should be determined experimentally by the investigator. Prepare working dilution immediately before use.

Western Blot 1:1,000

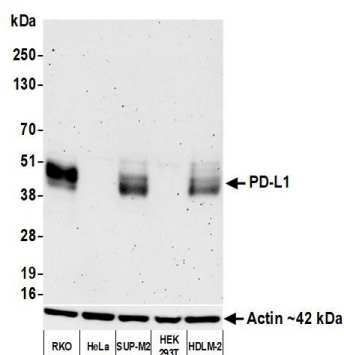
Immunoprecipitation 20 µl/1 mg lysate

Flow Cytometry Live or cells fixed in 4% formaldehyde and permeabilized with 90% methanol. 2 µl per 1 × 10⁶ cells.

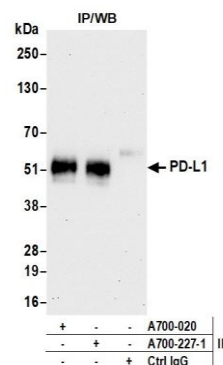
ADDITIONAL INFO <https://www.fortislife.com/p/A700-227-T>

Use the link above to view SDS, a current list of citations, and other product specific information.

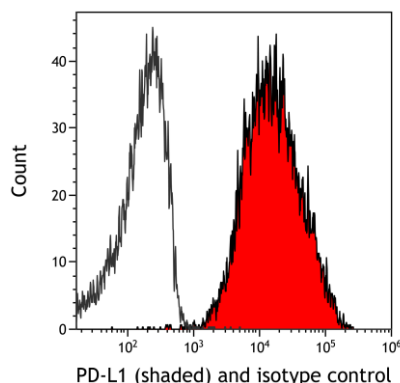
This document certifies that this product has met all of the quality control standards defined by Bethyl Laboratories, Inc.
Michael Spencer, PhD Date: September 29, 2022



Detection of human PD-L1 by western blot. *Samples:* Whole cell lysate (25 µg) from RKO, HeLa, SUP-M2, HEK293T, and HDLM-2 cells prepared using NETN lysis buffer. ***Antibody:*** Rabbit anti-PD-L1 recombinant monoclonal antibody [BLR227K] (A700-227 lot 1) used at 1:1000. ***Secondary:*** HRP-conjugated goat anti-rabbit IgG (A120-101P). Chemiluminescence with an exposure time of 3 minutes. Lower Panel: Rabbit anti-Actin recombinant monoclonal antibody [BLR057F] (A700-057).



Detection of human PD-L1 by western blot of immunoprecipitates. *Samples:* Whole cell lysate (1.0 mg per IP reaction; 5% of IP loaded) from RKO cells prepared using NETN lysis buffer. ***Antibodies:*** Rabbit anti-PD-L1 recombinant monoclonal antibody [BLR227K] (A700-227 lot 1) used for IP at 20 µl/mg lysate. PD-L1 was also immunoprecipitated by a second antibody against a different epitope of PD-L1 (A700-020). For blotting immunoprecipitated PD-L1, A700-227 was used at 1:1000. Chemiluminescence with an exposure time of 30 seconds.



Detection of human PD-L1 (shaded) in HDLM-2 cells by flow cytometry. *Antibody:* Rabbit anti-PD-L1 recombinant monoclonal antibody [BLR227] (A700-227) or isotype control (unshaded). ***Secondary:*** DyLight® 650-conjugated goat anti-rabbit IgG (A120-101D5).