



SZABO SCANDIC

Part of Europa Biosite

Produktinformation



Forschungsprodukte & Biochemikalien



Zellkultur & Verbrauchsmaterial



Diagnostik & molekulare Diagnostik



Laborgeräte & Service

Weitere Information auf den folgenden Seiten!
See the following pages for more information!



Lieferung & Zahlungsart

siehe unsere [Liefer- und Versandbedingungen](#)

Zuschläge

- Mindermengenzuschlag
- Trockeneiszuschlag
- Gefahrgutzuschlag
- Expressversand

SZABO-SCANDIC HandelsgmbH

Quellenstraße 110, A-1100 Wien

T. +43(0)1 489 3961-0

F. +43(0)1 489 3961-7

mail@szabo-scandic.com

www.szabo-scandic.com

[linkedin.com/company/szaboscandic](https://www.linkedin.com/company/szaboscandic) 

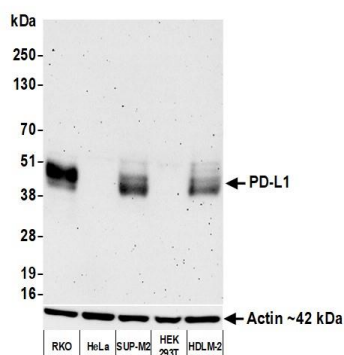
PD-L1 Recombinant Monoclonal Antibody [BLR227K]

Rabbit Recombinant Monoclonal

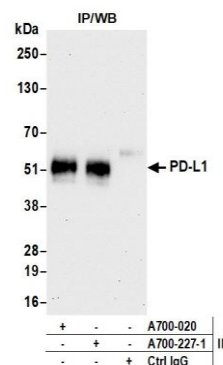
Purified		RefSeq ID	NP_054862.1
Catalog No.	A700-227	Uniprot ID	Q9NZQ7
Lot No.	A700-227-1	GeneID	29126

APPLICATIONS	WB, IP, Flow Cyt
SPECIES REACTIVITY	Human
AMOUNT	100 µl (10 blots)
CONCENTRATION	100 µg/ml
STORAGE/SHELF LIFE	2 – 8°C / 1 year from date of receipt
PHYSICAL STATE	Liquid
BUFFER	Borate Buffered Saline (BBS) pH 8.2 with 0.1% BSA and 0.09% Sodium Azide
ISOTYPE	IgG
CLONE #	BLR227K
ORIGIN	USA
PRODUCTION PROCEDURES	Recombinant antibody was purified from cell culture supernatant. Immunogen was a recombinant protein representing the extracellular domain of human Programmed cell death 1 ligand 1 (residues 19–238, NP_054862.1).
APPLICATIONS	Centrifuge tube to remove product from lid. Optimal working dilutions should be determined experimentally by the investigator. Prepare working dilution immediately before use. Western Blot 1:1,000 Immunoprecipitation 20 µl/1 mg lysate Flow Cytometry Live or cells fixed in 4% formaldehyde and permeabilized with 90% methanol. 2 µl per 1 x 10 ⁶ cells.
ADDITIONAL INFO	https://www.fortislife.com/p/A700-227 Use the link above to view SDS, a current list of citations, and other product specific information.

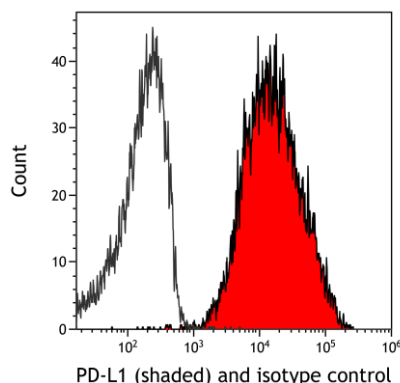
This document certifies that this product has met all of the quality control standards defined by Bethyl Laboratories, Inc.
Michael Spencer, PhD Date: September 29, 2022



Detection of human PD-L1 by western blot. *Samples:* Whole cell lysate (25 µg) from RKO, HeLa, SUP-M2, HEK293T, and HDLM-2 cells prepared using NETN lysis buffer. ***Antibody:*** Rabbit anti-PD-L1 recombinant monoclonal antibody [BLR227K] (A700-227 lot 1) used at 1:1000. ***Secondary:*** HRP-conjugated goat anti-rabbit IgG (A120-101P). Chemiluminescence with an exposure time of 3 minutes. Lower Panel: Rabbit anti-Actin recombinant monoclonal antibody [BLR057F] (A700-057).



Detection of human PD-L1 by western blot of immunoprecipitates. *Samples:* Whole cell lysate (1.0 mg per IP reaction; 5% of IP loaded) from RKO cells prepared using NETN lysis buffer. ***Antibodies:*** Rabbit anti-PD-L1 recombinant monoclonal antibody [BLR227K] (A700-227 lot 1) used for IP at 20 µl/mg lysate. PD-L1 was also immunoprecipitated by a second antibody against a different epitope of PD-L1 (A700-020). For blotting immunoprecipitated PD-L1, A700-227 was used at 1:1000. Chemiluminescence with an exposure time of 30 seconds.



Detection of human PD-L1 (shaded) in HDLM-2 cells by flow cytometry. *Antibody:* Rabbit anti-PD-L1 recombinant monoclonal antibody [BLR227] (A700-227) or isotype control (unshaded). ***Secondary:*** DyLight® 650-conjugated goat anti-rabbit IgG (A120-101D5).