



# SZABO SCANDIC

Part of Europa Biosite

## Produktinformation



Forschungsprodukte & Biochemikalien



Zellkultur & Verbrauchsmaterial



Diagnostik & molekulare Diagnostik



Laborgeräte & Service

Weitere Information auf den folgenden Seiten!  
See the following pages for more information!



### Lieferung & Zahlungsart

siehe unsere [Liefer- und Versandbedingungen](#)

### Zuschläge

- Mindermengenzuschlag
- Trockeneiszuschlag
- Gefahrgutzuschlag
- Expressversand

### SZABO-SCANDIC HandelsgmbH

Quellenstraße 110, A-1100 Wien

T. +43(0)1 489 3961-0

F. +43(0)1 489 3961-7

[mail@szabo-scandic.com](mailto:mail@szabo-scandic.com)

[www.szabo-scandic.com](http://www.szabo-scandic.com)

[linkedin.com/company/szaboscandic](https://www.linkedin.com/company/szaboscandic) 

# TCF1 /TCF7 Recombinant Monoclonal Antibody [BLR228K]

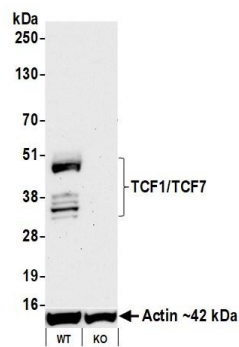
Rabbit Recombinant Monoclonal

Purified		RefSeq ID	NP_003193.2
Catalog No.	A700-228-T	Uniprot ID	P36402
Lot No.	A700-228-T-1	GeneID	6932

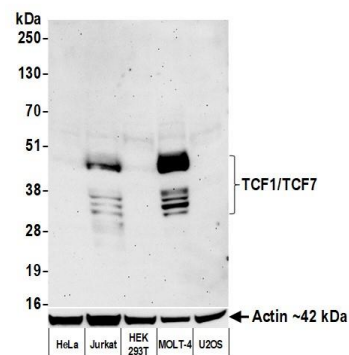
---

<b>APPLICATIONS</b>	WB, IHC, ICC
<b>SPECIES REACTIVITY</b>	Human, Mouse
<b>AMOUNT</b>	10 µl (5+ tests)
<b>CONCENTRATION</b>	250 µg/ml
<b>STORAGE/SHELF LIFE</b>	2 – 8°C / 1 year from date of receipt
<b>PHYSICAL STATE</b>	Liquid
<b>BUFFER</b>	Borate Buffered Saline (BBS) pH 8.2 with 0.1% BSA and 0.09% Sodium Azide
<b>ISOTYPE</b>	IgG
<b>CLONE #</b>	BLR228K
<b>ORIGIN</b>	USA
<b>PRODUCTION PROCEDURES</b>	Recombinant antibody was purified from cell culture supernatant.  Immunogen was a peptide representing a region between residue 200 and 250 of human Transcription factor 7 (TCF1/TCF7) using the numbering given in entry NP_003193.2 (Gene ID 6932).
<b>APPLICATIONS</b>	Centrifuge tube to remove product from lid. Optimal working dilutions should be determined experimentally by the investigator. Prepare working dilution immediately before use.  Western Blot                      1:1,000  Immunohistochemistry      1:100 to 1:500. Epitope retrieval with citrate buffer pH 6.0 is recommended for FFPE tissue sections.  Immunocytochemistry      1:100 to 1:500. Epitope retrieval with citrate buffer pH 6.0 is recommended for FFPE cell sections.
<b>IHC HUMAN CONTROLS</b>	Appendix, Lymph Node, Tonsil, CCRF-CEM Cells, HH Cells, Jurkat Cells, MOLT-4 Cells
<b>IHC MOUSE CONTROLS</b>	Spleen, Thymus, BW5147.3 Cells, EL-4 Cells
<b>ADDITIONAL INFO</b>	<a href="https://www.fortislife.com/p/A700-228-T">https://www.fortislife.com/p/A700-228-T</a> Use the link above to view SDS, a current list of citations, and other product specific information.

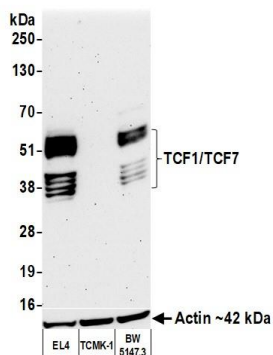
This document certifies that this product has met all of the quality control standards defined by Bethyl Laboratories, Inc.  
Michael Spencer, PhD Date: September 29, 2022



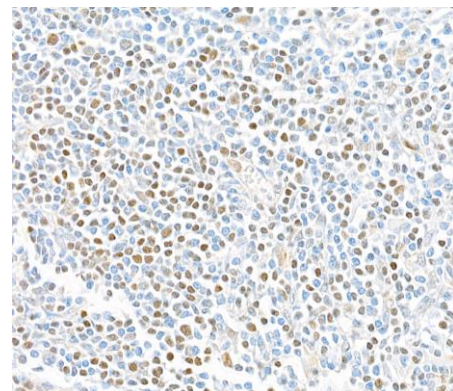
**Detection of human TCF1/TCF7 by western blot.** *Samples:* Whole cell lysate (50 µg) prepared using NETN lysis buffer from MOLT4 cells (WT and KO). *Antibody:* Rabbit anti-TCF1/TCF7 recombinant monoclonal antibody [BLR228K] (A700-228 lot 1) used at 1:1000. *Secondary:* HRP-conjugated goat anti-rabbit IgG (A120-101P). Chemiluminescence with an exposure time of 30 seconds. Lower Panel: Rabbit anti-Actin recombinant monoclonal antibody [BLR057F] (A700-057).



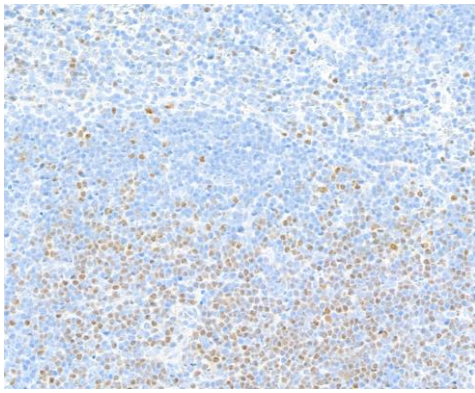
**Detection of human TCF1/TCF7 by western blot.** *Samples:* Whole cell lysate (50 µg) from HeLa, Jurkat, HEK293T, MOLT-4, and U2OS cells prepared using NETN lysis buffer. *Antibody:* Rabbit anti-TCF1/TCF7 recombinant monoclonal antibody [BLR228K] (A700-228 lot 1) used at 1:1000. *Secondary:* HRP-conjugated goat anti-rabbit IgG (A120-101P). Chemiluminescence with an exposure time of 75 seconds. Lower Panel: Rabbit anti-Actin recombinant monoclonal antibody [BLR057F] (A700-057).



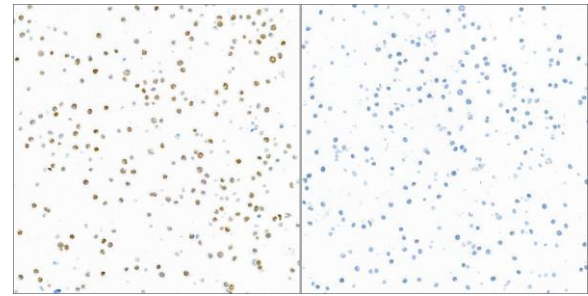
**Detection of mouse TCF1/TCF7 by western blot.** *Samples:* Whole cell lysate (50 µg) from EL4, TCMK-1, and BW5147.3 cells prepared using NETN lysis buffer. *Antibody:* Rabbit anti-TCF1/TCF7 recombinant monoclonal antibody [BLR228K] (A700-228 lot 1) used at 1:1000. *Secondary:* HRP-conjugated goat anti-rabbit IgG (A120-101P). Chemiluminescence with an exposure time of 75 seconds. Lower Panel: Rabbit anti-Actin recombinant monoclonal antibody [BLR057F] (A700-057).



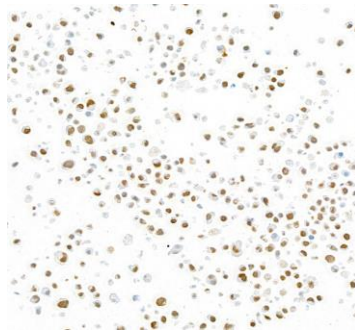
**Detection of human TCF1/TCF7 by immunohistochemistry.** *Sample:* FFPE section of human lymph node. *Antibody:* Rabbit anti-TCF1/TCF7 recombinant monoclonal antibody [BLR228K] (A700-228-1). *Secondary:* HRP-conjugated goat anti-rabbit IgG (A120-501P).



**Detection of mouse TCF1/TCF7 by immunohistochemistry.** *Sample:* FFPE section of mouse spleen. *Antibody:* Rabbit anti-TCF1/TCF7 recombinant monoclonal antibody [BLR228K] (A700-228-1). *Secondary:* HRP-conjugated goat anti-rabbit IgG (A120-501P).



**Detection of human TCF1/TCF7 by immunocytochemistry.** *Sample:* FFPE sections of MOLT4 cells (left) and MOLT4 knock-out cells (right). *Antibody:* Rabbit anti-TCF1/TCF7 recombinant monoclonal antibody [BLR228K] (A700-228-1). *Secondary:* HRP-conjugated goat anti-rabbit IgG (A120-501P).



**Detection of mouse TCF1/TCF7 by immunocytochemistry.** *Sample:* FFPE section of EL4 cells. *Antibody:* Rabbit anti-TCF1/TCF7 recombinant monoclonal antibody [BLR228K] (A700-228-1). *Secondary:* HRP-conjugated goat anti-rabbit IgG (A120-501P).