



# SZABO SCANDIC

Part of Europa Biosite

## Produktinformation



Forschungsprodukte & Biochemikalien



Zellkultur & Verbrauchsmaterial



Diagnostik & molekulare Diagnostik



Laborgeräte & Service

Weitere Information auf den folgenden Seiten!  
See the following pages for more information!



### Lieferung & Zahlungsart

siehe unsere [Liefer- und Versandbedingungen](#)

### Zuschläge

- Mindermengenzuschlag
- Trockeneiszuschlag
- Gefahrgutzuschlag
- Expressversand

### SZABO-SCANDIC HandelsgmbH

Quellenstraße 110, A-1100 Wien

T. +43(0)1 489 3961-0

F. +43(0)1 489 3961-7

[mail@szabo-scandic.com](mailto:mail@szabo-scandic.com)

[www.szabo-scandic.com](http://www.szabo-scandic.com)

[linkedin.com/company/szaboscandic](https://www.linkedin.com/company/szaboscandic) 

# FOXQ1 Recombinant Monoclonal Antibody [BLR230K]

Rabbit Recombinant Monoclonal

Purified		RefSeq ID	NP_150285.3
Catalog No.	A700-230-T	Uniprot ID	Q9C009
Lot No.	A700-230-T-1	GeneID	94234

---

<b>APPLICATIONS</b>	WB, IP, IHC, ICC, Flow Cyt
<b>SPECIES REACTIVITY</b>	Human
<b>AMOUNT</b>	10 µl (5+ tests)
<b>CONCENTRATION</b>	1000 µg/ml
<b>STORAGE/SHELF LIFE</b>	2 - 8°C / 1 year from date of receipt
<b>PHYSICAL STATE</b>	Liquid
<b>BUFFER</b>	Borate Buffered Saline (BBS) pH 8.2 with 0.09% Sodium Azide, BSA Free
<b>ISOTYPE</b>	IgG
<b>CLONE #</b>	BLR230K
<b>ORIGIN</b>	USA
<b>PRODUCTION PROCEDURES</b>	Recombinant antibody was purified from cell culture supernatant.

Immunogen was a peptide representing a region between residue 353 and the C-terminus (residue 403) of human Forkhead box protein Q1 using the numbering given in entry NP\_150285.3 (Gene ID 94234).

**APPLICATIONS** Centrifuge tube to remove product from lid. Optimal working dilutions should be determined experimentally by the investigator. Prepare working dilution immediately before use.

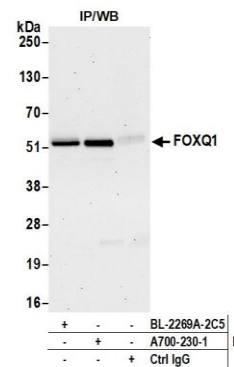
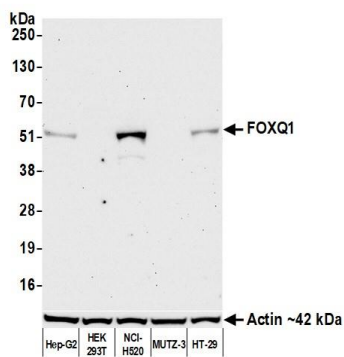
Western Blot	1:1,000
Immunoprecipitation	6 µl/1 mg lysate
Immunohistochemistry	1:100 to 1:500. Epitope retrieval with Tris-EDTA pH 9.0 is recommended for FFPE tissue sections.
Immunocytochemistry	1:100 to 1:500. Epitope retrieval with Tris-EDTA pH 9.0 is recommended for FFPE cell sections.
Flow Cytometry	Fixed in 4% formaldehyde and permeabilized with 90% methanol. 0.5 µl per 1 x 10 <sup>6</sup> cells.

**IHC HUMAN CONTROLS** Bladder Carcinoma, Colon Carcinoma, Ovarian Carcinoma, Hep-G2 Cells, HT-29 Cells, NCI-H520 Cells

**IHC MOUSE CONTROLS** Bladder

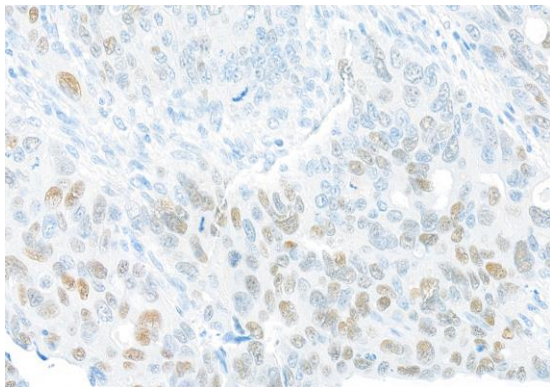
**ADDITIONAL INFO** <https://www.fortislifesciences.com/p/A700-230-T>  
Use the link above to view SDS, a current list of citations, and other product specific information.

This document certifies that this product has met all of the quality control standards defined by Bethyl Laboratories, Inc.  
Michael Spencer, PhD Date: September 29, 2022

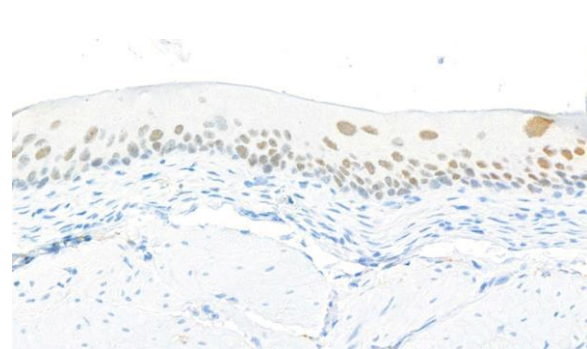


**Detection of human FOXQ1 by western blot.** *Samples:* Whole cell lysate (50 µg) from Hep-G2, HEK293T, NCI-H520, MUTZ-3, and HT-29 cells prepared using NETN lysis buffer. *Antibody:* Rabbit anti-FOXQ1 recombinant monoclonal antibody [BLR230K] (A700-230 lot 1) used at 1:1000. *Secondary:* HRP-conjugated goat anti-rabbit IgG (A120-101P). Chemiluminescence with an exposure time of 30 seconds. Lower Panel: Rabbit anti-Actin recombinant monoclonal antibody [BLR057F] (A700-057).

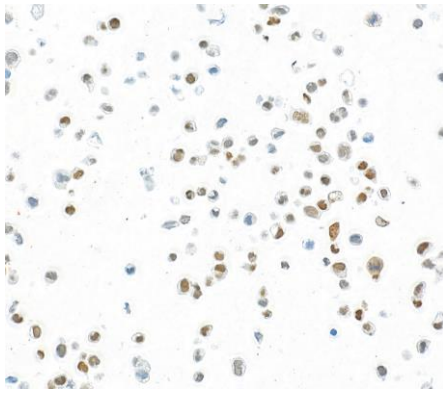
**Detection of human FOXQ1 by western blot of immunoprecipitates.** *Samples:* Whole cell lysate (1.0 mg per IP reaction; 20% of IP loaded) from NCI-H520 cells prepared using NETN lysis buffer. *Antibodies:* Rabbit anti-FOXQ1 recombinant monoclonal antibody [BLR230K] (A700-230 lot 1) used for IP at 6 µl/mg lysate. FOXQ1 was also immunoprecipitated by a second antibody against a different epitope of FOXQ1 (BL-2269A-2C5). For blotting immunoprecipitated FOXQ1, A700-230 was used at 1:1000. Chemiluminescence with an exposure time of 30 seconds.



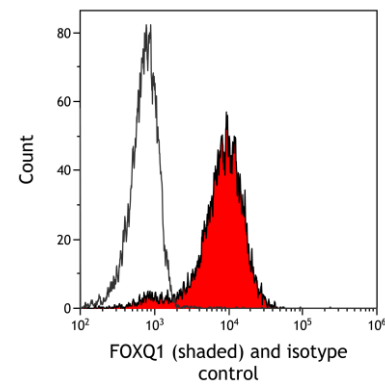
**Detection of human FOXQ1 by immunohistochemistry.** *Sample:* FFPE section of human colon carcinoma. *Antibody:* Rabbit anti-FOXQ1 recombinant monoclonal antibody [BLR230K] (A700-230-1). *Secondary:* HRP-conjugated goat anti-rabbit IgG (A120-501P).



**Detection of mouse FOXQ1 by immunohistochemistry.** *Sample:* FFPE section of mouse bladder. *Antibody:* Rabbit anti-FOXQ1 recombinant monoclonal antibody [BLR230K] (A700-230-1). *Secondary:* HRP-conjugated goat anti-rabbit IgG (A120-501P).

**Detection of human FOXQ1 by immunocytochemistry.**

*Sample:* FFPE section of NCI-H520 cells. *Antibody:* Rabbit anti-FOXQ1 recombinant monoclonal antibody [BLR230K] (A700-230-1). *Secondary:* HRP-conjugated goat anti-rabbit IgG (A120-501P).



**Detection of human FOXQ1 (shaded) in HT-29 cells by flow cytometry.** *Antibody:* Rabbit anti-FOXQ1 recombinant monoclonal antibody [BLR230K] (A700-230) or isotype control (unshaded). *Secondary:* DyLight® 650-conjugated goat anti-rabbit IgG (A120-101D5).