



SZABO SCANDIC

Part of Europa Biosite

Produktinformation



Forschungsprodukte & Biochemikalien



Zellkultur & Verbrauchsmaterial



Diagnostik & molekulare Diagnostik



Laborgeräte & Service

Weitere Information auf den folgenden Seiten!
See the following pages for more information!



Lieferung & Zahlungsart

siehe unsere [Liefer- und Versandbedingungen](#)

Zuschläge

- Mindermengenzuschlag
- Trockeneiszuschlag
- Gefahrgutzuschlag
- Expressversand

SZABO-SCANDIC HandelsgmbH

Quellenstraße 110, A-1100 Wien

T. +43(0)1 489 3961-0

F. +43(0)1 489 3961-7

mail@szabo-scandic.com

www.szabo-scandic.com

[linkedin.com/company/szaboscandic](https://www.linkedin.com/company/szaboscandic) 

beta-Tubulin Recombinant Monoclonal Antibody [BLR236K]

Rabbit Recombinant Monoclonal

Purified		RefSeq ID	NP_001280141.1
Catalog No.	A700-236-T	Uniprot ID	P07437
Lot No.	A700-236-T-1	GeneID	203068

APPLICATIONS WB, IP, IHC, ICC, Flow Cyt

SPECIES REACTIVITY Human, Mouse

AMOUNT 10 µl (5+ tests)

CONCENTRATION 100 µg/ml

STORAGE/SHELF LIFE 2 – 8°C / 1 year from date of receipt

PHYSICAL STATE Liquid

BUFFER Borate Buffered Saline (BBS) pH 8.2 with 0.1% BSA and 0.09% Sodium Azide

ISOTYPE IgG

CLONE # BLR236K

ORIGIN USA

PRODUCTION PROCEDURES Recombinant antibody was purified from cell culture supernatant.

Immunogen was a peptide representing a region between residue 1 and 50 of human class 1 beta tubulin using the numbering given in entry NP_001280141.1 (Gene ID 203068).

APPLICATIONS Centrifuge tube to remove product from lid. Optimal working dilutions should be determined experimentally by the investigator. Prepare working dilution immediately before use.

Western Blot 1:1,000

Immunoprecipitation 20 µl/1 mg lysate

Immunohistochemistry 1:100 to 1:500. Epitope retrieval with citrate buffer pH 6.0 is recommended for FFPE tissue sections.

Immunocytochemistry 1:100 to 1:500. Epitope retrieval with citrate buffer pH 6.0 is recommended for FFPE cell sections.

Flow Cytometry Fixed in 4% formaldehyde and permeabilized with 90% methanol. 1 µl per 1×10^6 cells.

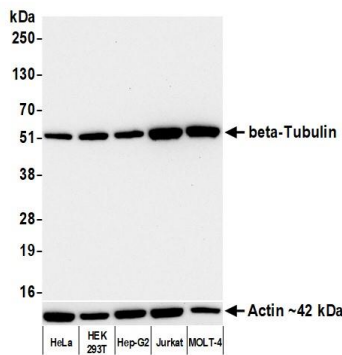
IHC HUMAN CONTROLS Breast Carcinoma, Lung Carcinoma, Tonsil, K-562 Cells, MOLT-4 Cells, ND7/23 Cells, SK-N-BE (2) Cells

IHC MOUSE CONTROLS Testis, A20 Cells, ND7/23 Cells

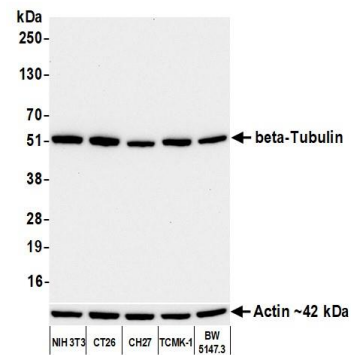
ADDITIONAL INFO <https://www.fortislife.com/p/A700-236-T>

Use the link above to view SDS, a current list of citations, and other product specific information.

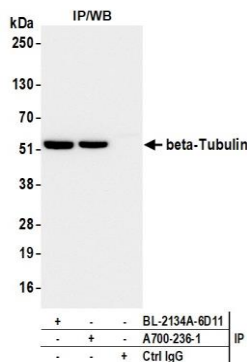
This document certifies that this product has met all of the quality control standards defined by Bethyl Laboratories, Inc.
Michael Spencer, PhD Date: September 29, 2022

**Detection of human beta-Tubulin by western blot.**

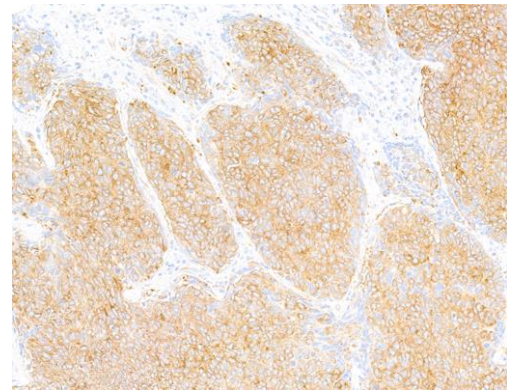
Samples: Whole cell lysate (10 µg) from HeLa, HEK293T, Hep-G2, Jurkat, and MOLT-4 cells prepared using NETN lysis buffer. **Antibody:** Rabbit anti-beta-Tubulin recombinant monoclonal antibody [BLR236K] (A700-236 lot 1) used at 1:1000. **Secondary:** HRP-conjugated goat anti-rabbit IgG (A120-101P). Chemiluminescence with an exposure time of 10 seconds. Lower Panel: Rabbit anti-Actin recombinant monoclonal antibody [BLR057F] (A700-057).

**Detection of mouse beta-Tubulin by western blot.**

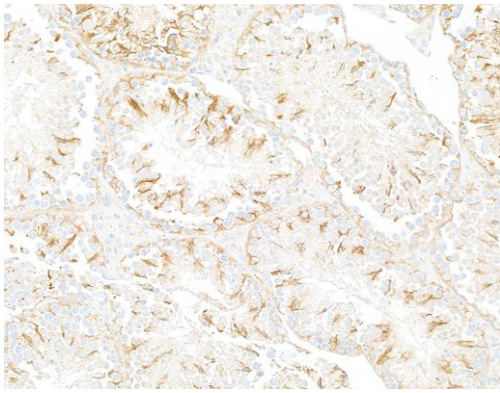
Samples: Whole cell lysate (10 µg) from NIH 3T3, CT26, CH27, TCMK-1, and BW5147.3 cells prepared using NETN lysis buffer. **Antibody:** Rabbit anti-beta-Tubulin recombinant monoclonal antibody [BLR236K] (A700-236 lot 1) used at 1:1000. **Secondary:** HRP-conjugated goat anti-rabbit IgG (A120-101P). Chemiluminescence with an exposure time of 10 seconds. Lower Panel: Rabbit anti-Actin recombinant monoclonal antibody [BLR057F] (A700-057).



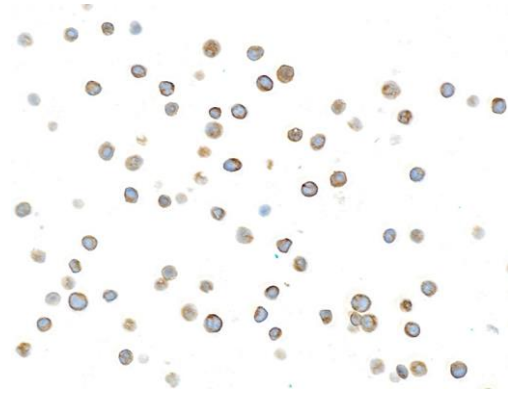
Detection of human beta-Tubulin by western blot of immunoprecipitates. **Samples:** Whole cell lysate (1.0 mg per IP reaction; 20% of IP loaded) from Jurkat cells prepared using NETN lysis buffer. **Antibodies:** Rabbit anti-beta-Tubulin recombinant monoclonal antibody [BLR236K] (A700-236 lot 1) used for IP at 20 µl/mg lysate. beta-Tubulin was also immunoprecipitated by a second antibody against a different epitope of beta-Tubulin (BL-2134A-6D11). For blotting immunoprecipitated beta-Tubulin, A700-236 was used at 1:1000. Chemiluminescence with an exposure time of 10 seconds.



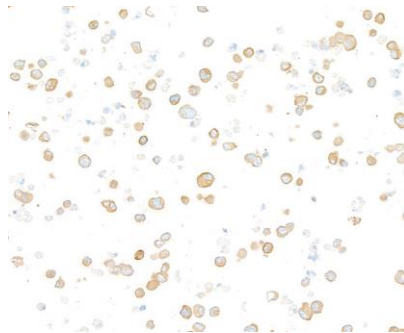
Detection of human beta-Tubulin by immunohistochemistry. **Sample:** FFPE section of lung carcinoma. **Antibody:** Rabbit anti-beta-Tubulin recombinant monoclonal antibody [BLR236K] (A700-236). **Secondary:** HRP-conjugated goat anti-rabbit IgG (A120-501P).



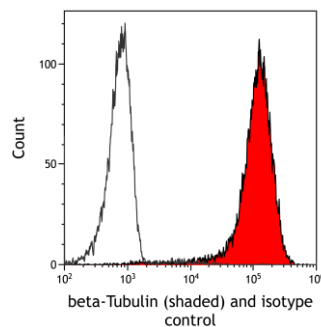
Detection of mouse beta-Tubulin by immunohistochemistry. *Sample:* FFPE section of mouse testis. *Antibody:* Rabbit anti-beta-Tubulin recombinant monoclonal antibody [BLR236K] (A700-236). *Secondary:* HRP-conjugated goat anti-rabbit IgG (A120-501P).



Detection of human beta-Tubulin by immunocytochemistry. *Sample:* FFPE section of MOLT-4 cells. *Antibody:* Rabbit anti-beta-Tubulin recombinant monoclonal antibody [BLR236K] (A700-236). *Secondary:* HRP-conjugated goat anti-rabbit IgG (A120-501P).



Detection of mouse beta-Tubulin by immunocytochemistry. *Sample:* FFPE section of ND7/23 cells. *Antibody:* Rabbit anti-beta-Tubulin recombinant monoclonal antibody [BLR236K] (A700-236). *Secondary:* HRP-conjugated goat anti-rabbit IgG (A120-501P).



Detection of human beta-Tubulin (shaded) in K562 cells by flow cytometry. *Antibody:* Rabbit anti-beta-Tubulin recombinant monoclonal antibody [BLR236K] (A700-236) or isotype control (unshaded). *Secondary:* DyLight® 650-conjugated goat anti-rabbit IgG (A120-101D5).