



SZABO SCANDIC

Part of Europa Biosite

Produktinformation



Forschungsprodukte & Biochemikalien



Zellkultur & Verbrauchsmaterial



Diagnostik & molekulare Diagnostik



Laborgeräte & Service

Weitere Information auf den folgenden Seiten!
See the following pages for more information!



Lieferung & Zahlungsart

siehe unsere [Liefer- und Versandbedingungen](#)

Zuschläge

- Mindermengenzuschlag
- Trockeneiszuschlag
- Gefahrgutzuschlag
- Expressversand

SZABO-SCANDIC HandelsgmbH

Quellenstraße 110, A-1100 Wien

T. +43(0)1 489 3961-0

F. +43(0)1 489 3961-7

mail@szabo-scandic.com

www.szabo-scandic.com

[linkedin.com/company/szaboscandic](https://www.linkedin.com/company/szaboscandic) 

KLF5 Recombinant Monoclonal Antibody [BLR243L]

Rabbit Recombinant Monoclonal

Purified		RefSeq ID	NP_001721.2
Catalog No.	A700-243-T	Uniprot ID	Q13887
Lot No.	1	GeneID	688

APPLICATIONS	WB, IP, IHC, ICC, Flow Cyt
SPECIES REACTIVITY	Human, Mouse
AMOUNT	10 µl (5+ tests)
CONCENTRATION	1000 µg/ml
STORAGE/SHELF LIFE	2 – 8°C / 1 year from date of receipt
PHYSICAL STATE	Liquid
BUFFER	Borate Buffered Saline (BBS) pH 8.2 with 0.09% Sodium Azide, BSA-Free
ISOTYPE	IgG
CLONE #	BLR243L
ORIGIN	USA

PRODUCTION PROCEDURES Recombinant antibody was purified from cell culture supernatant.

Immunogen was a peptide representing a region between residue 300 and 350 of human Krueppel-like factor 5 using the numbering given in entry NP_001721.2 (Gene ID 688).

APPLICATIONS Centrifuge tube to remove product from lid. Optimal working dilutions should be determined experimentally by the investigator. Prepare working dilution immediately before use.

Western Blot	1:1,000
Immunoprecipitation	6 µl/1 mg lysate
Immunohistochemistry	1:100 to 1:500. Epitope retrieval with citrate buffer pH 6.0 is recommended for FFPE tissue sections.
Immunocytochemistry	1:100 to 1:500. Epitope retrieval with citrate buffer pH 6.0 is recommended for FFPE cell sections.
Flow Cytometry	Fixed in 4% formaldehyde and permeabilized with 90% methanol. 0.1 µl per 1×10^6 cells.

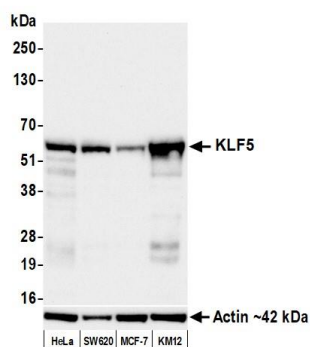
IHC HUMAN CONTROLS Breast Carcinoma, Colon Carcinoma, Gastric Carcinoma, Liver Carcinoma, Ovarian Carcinoma, Skin Carcinoma, A549 Cells, Cal-27 Cells, DLD-1 Cells, HT-29 Cells, KM12 Cells, MCF10A Cells

IHC MOUSE CONTROLS Gut, C2C12 Cells, CT26 cells

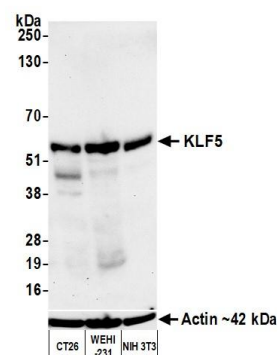
ADDITIONAL INFO <https://www.fortislife.com/p/A700-243-T>

Use the link above to view SDS, a current list of citations, and other product specific information.

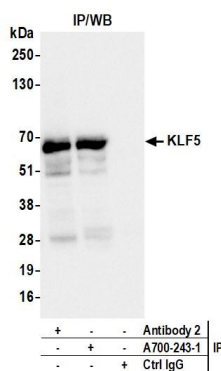
This document certifies that this product has met all of the quality control standards defined by Bethyl Laboratories, Inc.
Michael Spencer, PhD Date: March 27, 2023



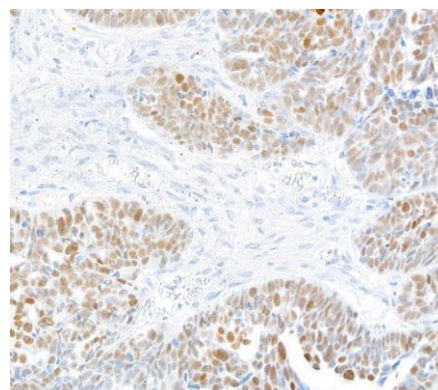
Detection of human KLF5 by western blot. *Samples:* Whole cell lysate (25 µg) from HeLa, SW620, MCF-7, and KM12 cells prepared using NETN lysis buffer. *Antibody:* Rabbit anti-KLF5 recombinant monoclonal antibody [BLR243L] (A700-243 lot 1) used at 1:1000. *Secondary:* HRP-conjugated goat anti-rabbit IgG (A120-101P). Chemiluminescence with an exposure time of 10 seconds. Lower Panel: Rabbit anti-Actin recombinant monoclonal antibody [BLR057F] (A700-057).



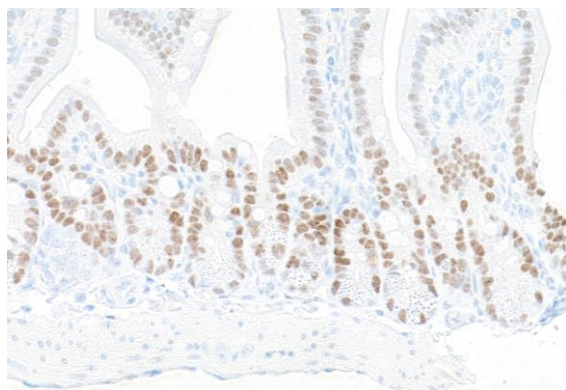
Detection of mouse KLF5 by western blot. *Samples:* Whole cell lysate (25 µg) from CT26, WEHI-231, and NIH 3T3 cells prepared using NETN lysis buffer. *Antibody:* Rabbit anti-KLF5 recombinant monoclonal antibody [BLR243L] (A700-243 lot 1) used at 1:1000. *Secondary:* HRP-conjugated goat anti-rabbit IgG (A120-101P). Chemiluminescence with an exposure time of 75 seconds. Lower Panel: Rabbit anti-Actin recombinant monoclonal antibody [BLR057F] (A700-057).



Detection of human KLF5 by western blot of immunoprecipitates. *Samples:* Whole cell lysate (1.0 mg per IP reaction; 20% of IP loaded) from KM12 cells prepared using NETN lysis buffer. *Antibodies:* Rabbit anti-KLF5 recombinant monoclonal antibody [BLR243L] (A700-243 lot 1) used for IP at 6 µl/mg lysate. KLF5 was also immunoprecipitated by a second antibody against a different epitope of KLF5 (Antibody 2). For blotting immunoprecipitated KLF5, A700-243 was used at 1:1000. Chemiluminescence with an exposure time of 3 seconds.



Detection of human KLF5 by immunohistochemistry. *Sample:* FFPE section of human ovarian carcinoma. *Antibody:* Rabbit anti-KLF5 recombinant monoclonal antibody [BLR243L] (A700-243). *Secondary:* HRP-conjugated goat anti-rabbit IgG (A120-501P).



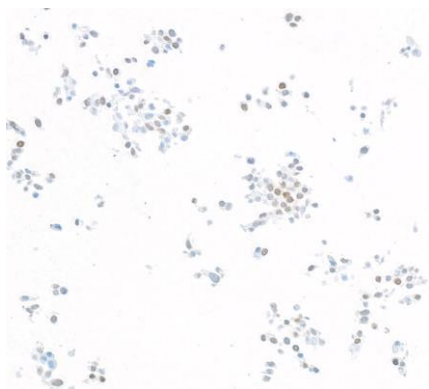
Detection of mouse KLF5 by immunohistochemistry.

Sample: FFPE section of mouse gut. *Antibody:* Rabbit anti-KLF5 recombinant monoclonal antibody [BLR243L] (A700-243). *Secondary:* HRP-conjugated goat anti-rabbit IgG (A120-501P).



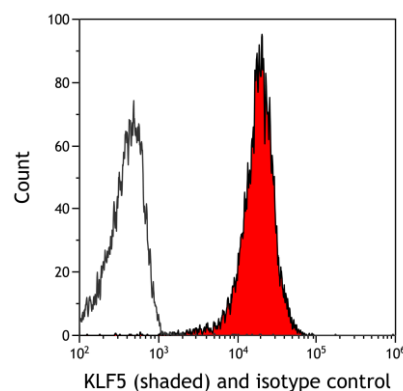
Detection of human KLF5 by immunocytochemistry.

Sample: FFPE section of HT-29 cells. *Antibody:* Rabbit anti-KLF5 recombinant monoclonal antibody [BLR243L] (A700-243). *Secondary:* HRP-conjugated goat anti-rabbit IgG (A120-501P).

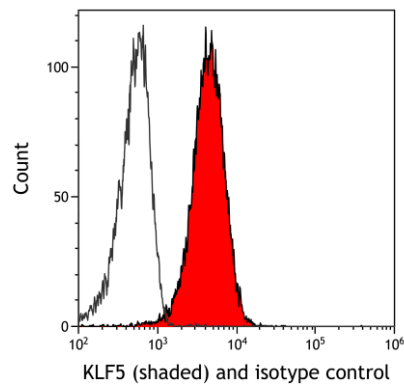


Detection of mouse KLF5 by immunocytochemistry.

Sample: FFPE section of CT26 cells. *Antibody:* Rabbit anti-KLF5 recombinant monoclonal antibody [BLR243L] (A700-243). *Secondary:* HRP-conjugated goat anti-rabbit IgG (A120-501P).



Detection of human KLF5 (shaded) in HT-29 cells by flow cytometry. *Antibody:* Rabbit anti-KLF5 recombinant monoclonal antibody [BLR243K] (A700-243) or isotype control (unshaded). *Secondary:* DyLight® 650-conjugated goat anti-rabbit IgG (A120-101D5).



Detection of mouse KLF5 (shaded) in NIH3T3 cells by flow cytometry. *Antibody:* Rabbit anti-KLF5 recombinant monoclonal antibody [BLR243K] (A700-243) or isotype control (unshaded). *Secondary:* DyLight® 650-conjugated goat anti-rabbit IgG (A120-101D5).