



# SZABO SCANDIC

Part of Europa Biosite

## Produktinformation



Forschungsprodukte & Biochemikalien



Zellkultur & Verbrauchsmaterial



Diagnostik & molekulare Diagnostik



Laborgeräte & Service

Weitere Information auf den folgenden Seiten!  
See the following pages for more information!



### Lieferung & Zahlungsart

siehe unsere [Liefer- und Versandbedingungen](#)

### Zuschläge

- Mindermengenzuschlag
- Trockeneiszuschlag
- Gefahrgutzuschlag
- Expressversand

### SZABO-SCANDIC HandelsgmbH

Quellenstraße 110, A-1100 Wien

T. +43(0)1 489 3961-0

F. +43(0)1 489 3961-7

[mail@szabo-scandic.com](mailto:mail@szabo-scandic.com)

[www.szabo-scandic.com](http://www.szabo-scandic.com)

[linkedin.com/company/szaboscandic](https://www.linkedin.com/company/szaboscandic) 

# AKT1 Recombinant Monoclonal Antibody [BLR245L]

Rabbit Recombinant Monoclonal

Purified		RefSeq ID	NP_001369359.1
Catalog No.	A700-245	Uniprot ID	P31749
Lot No.	1	GeneID	207

---

<b>APPLICATIONS</b>	WB, Flow Cyt
<b>SPECIES REACTIVITY</b>	Human, Mouse
<b>AMOUNT</b>	100 µl (10 blots)
<b>CONCENTRATION</b>	400 µg/ml
<b>STORAGE/SHELF LIFE</b>	2 – 8°C / 1 year from date of receipt
<b>PHYSICAL STATE</b>	Liquid
<b>BUFFER</b>	Borate Buffered Saline (BBS) pH 8.2 with 0.1% BSA and 0.09% Sodium Azide
<b>ISOTYPE</b>	IgG
<b>CLONE #</b>	BLR245L
<b>ORIGIN</b>	USA

**PRODUCTION PROCEDURES** Recombinant antibody was purified from cell culture supernatant.

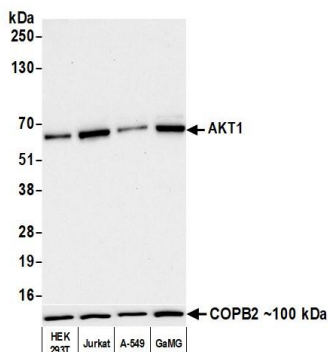
Immunogen was a peptide representing a region between residue 100 and 150 of human RAC- $\alpha$  serine/threonine-protein kinase (aka AKT1) using the numbering given in entry NP\_001369359.1 (Gene ID 207).

**APPLICATIONS** Centrifuge tube to remove product from lid. Optimal working dilutions should be determined experimentally by the investigator. Prepare working dilution immediately before use.

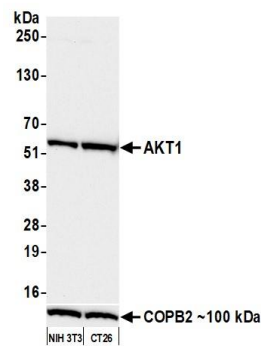
Western Blot	1:1,000
Flow Cytometry	Fixed in 4% formaldehyde and permeabilized with 90% methanol. 1 µl per $1 \times 10^6$ cells.

**ADDITIONAL INFO** <https://www.fortislife.com/p/A700-245>  
Use the link above to view SDS, a current list of citations, and other product specific information.

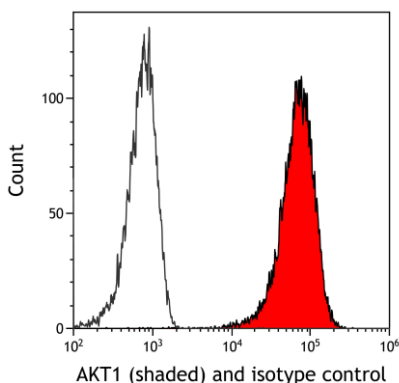
This document certifies that this product has met all of the quality control standards defined by Bethyl Laboratories, Inc.  
Michael Spencer, PhD Date: April 14, 2023



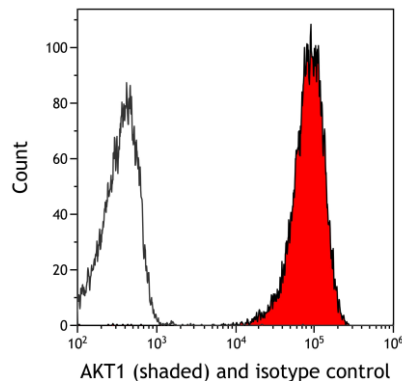
**Detection of human AKT1 by western blot.** *Samples:* Whole cell lysate (10 µg) from HEK293T, Jurkat, A-549, and GaMG cells prepared using NETN lysis buffer. *Antibody:* Rabbit anti-AKT1 recombinant monoclonal antibody [BLR245L] (A700-245 lot 1) used at 1:1000. *Secondary:* HRP-conjugated goat anti-rabbit IgG (A120-101P). *Detection:* Chemiluminescence with an exposure time of 30 seconds.



**Detection of mouse AKT1 by western blot.** *Samples:* Whole cell lysate (25 µg) from NIH 3T3 and CT26 cells prepared using NETN lysis buffer. *Antibody:* Rabbit anti-AKT1 recombinant monoclonal antibody [BLR245L] (A700-245 lot 1) used at 1:1000. *Secondary:* HRP-conjugated goat anti-rabbit IgG (A120-101P). *Detection:* Chemiluminescence with an exposure time of 30 seconds. Lower Panel: Rabbit anti-COPB2 antibody (A304-523A).



**Detection of human AKT1 (shaded) in FaDu cells by flow cytometry.** *Antibody:* Rabbit anti-AKT1 recombinant monoclonal antibody [BLR245L] (A700-245) or isotype control (unshaded). *Secondary:* DyLight® 650-conjugated goat anti-rabbit IgG (A120-101D5).



**Detection of mouse AKT1 (shaded) in CTLL-2 cells by flow cytometry.** *Antibody:* Rabbit anti-AKT1 recombinant monoclonal antibody [BLR245L] (A700-245) or isotype control (unshaded). *Secondary:* DyLight® 650-conjugated goat anti-rabbit IgG (A120-101D5).