



# SZABO SCANDIC

Part of Europa Biosite

## Produktinformation



Forschungsprodukte & Biochemikalien



Zellkultur & Verbrauchsmaterial



Diagnostik & molekulare Diagnostik



Laborgeräte & Service

Weitere Information auf den folgenden Seiten!  
See the following pages for more information!



### Lieferung & Zahlungsart

siehe unsere [Liefer- und Versandbedingungen](#)

### Zuschläge

- Mindermengenzuschlag
- Trockeneiszuschlag
- Gefahrgutzuschlag
- Expressversand

### SZABO-SCANDIC HandelsgmbH

Quellenstraße 110, A-1100 Wien

T. +43(0)1 489 3961-0

F. +43(0)1 489 3961-7

[mail@szabo-scandic.com](mailto:mail@szabo-scandic.com)

[www.szabo-scandic.com](http://www.szabo-scandic.com)

[linkedin.com/company/szaboscandic](https://www.linkedin.com/company/szaboscandic) 

# JDP2 Recombinant Monoclonal Antibody [BLR246L]

Rabbit Recombinant Monoclonal

Purified		RefSeq ID	NP_001128520.1
Catalog No.	A700-246-T	Uniprot ID	Q8WYK2
Lot No.	1	GeneID	122953

<b>APPLICATIONS</b>	WB, IHC, ICC, Flow Cyt
<b>SPECIES REACTIVITY</b>	Human, Mouse
<b>AMOUNT</b>	10 µl (5+ tests)
<b>CONCENTRATION</b>	400 µg/ml
<b>STORAGE/SHELF LIFE</b>	2 - 8°C / 1 year from date of receipt
<b>PHYSICAL STATE</b>	Liquid
<b>BUFFER</b>	Borate Buffered Saline (BBS) pH 8.2 with 0.1% BSA and 0.09% Sodium Azide
<b>ISOTYPE</b>	IgG
<b>CLONE #</b>	BLR246L
<b>ORIGIN</b>	USA

**PRODUCTION PROCEDURES** Recombinant antibody was purified from cell culture supernatant.

Immunogen was a peptide representing a region between residue 50 and 100 of human Jun dimerization protein 2 using the numbering given in entry NP\_001128520.1 (Gene ID 122953).

**APPLICATIONS** Centrifuge tube to remove product from lid. Optimal working dilutions should be determined experimentally by the investigator. Prepare working dilution immediately before use.

Western Blot	1:1,000
Immunohistochemistry	1:40 to 1:100. Epitope retrieval with Tris-EDTA pH 9.0 is recommended for FFPE tissue sections.
Immunocytochemistry	1:40 to 1:100. Epitope retrieval with Tris-EDTA pH 9.0 is recommended for FFPE cell sections.
Flow Cytometry	Fixed in 4% formaldehyde and permeabilized with 90% methanol. 1 µl per $1 \times 10^6$ cells.

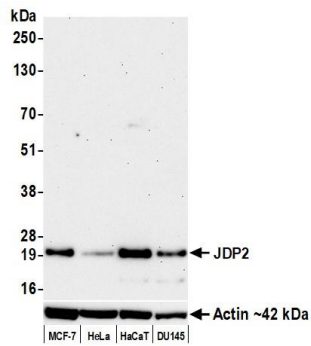
**IHC HUMAN CONTROLS** Ovarian Carcinoma, Skin Carcinoma, Spleen, FaDu Cells, HaCaT Cells, LNCap Cells

**IHC MOUSE CONTROLS** RenCa Tumor, C2C12 Cells, RenCa Cells

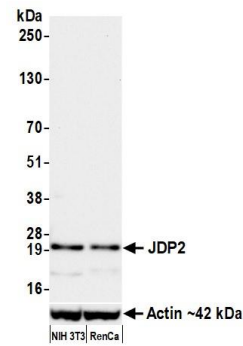
**ADDITIONAL INFO** <https://www.fortislifesciences.com/p/A700-246-T>

Use the link above to view SDS, a current list of citations, and other product specific information.

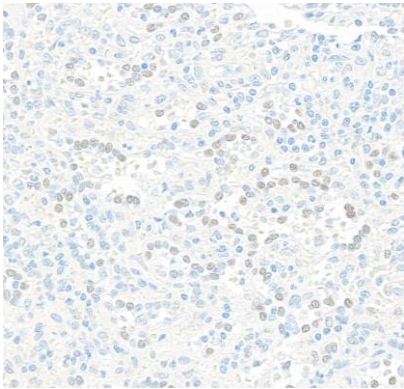
This document certifies that this product has met all of the quality control standards defined by Bethyl Laboratories, Inc.  
Michael Spencer, PhD Date: March 27, 2023



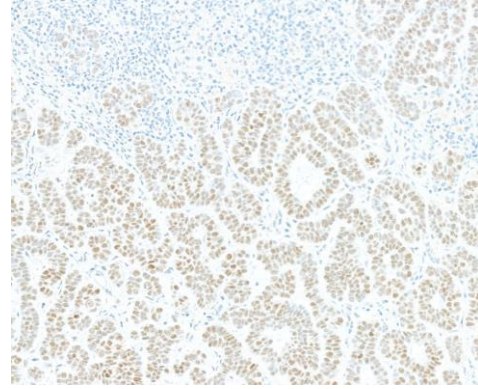
**Detection of human JDP2 by western blot.** *Samples:* Whole cell lysate (25 µg) from MCF-7, HeLa, HaCaT, and DU145 cells prepared using NETN lysis buffer. *Antibody:* Rabbit anti-JDP2 recombinant monoclonal antibody [BLR246L] (A700-246 lot 1) used at 1:1000. *Secondary:* HRP-conjugated goat anti-rabbit IgG (A120-101P). *Detection:* Chemiluminescence with an exposure time of 3 minutes. Lower Panel: Rabbit anti-Actin recombinant monoclonal antibody [BLR057F] (A700-057).



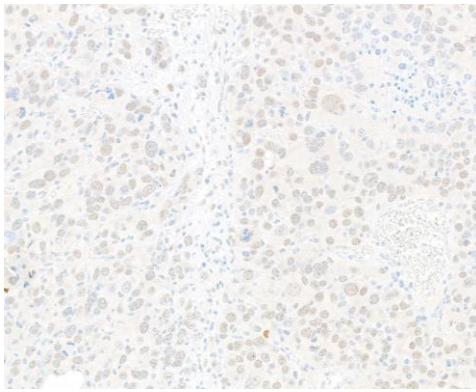
**Detection of mouse JDP2 by western blot.** *Samples:* Whole cell lysate (50 µg) from NIH 3T3 and RenCa cells prepared using NETN lysis buffer. *Antibody:* Rabbit anti-JDP2 recombinant monoclonal antibody [BLR246L] (A700-246 lot 1) used at 1:1000. *Secondary:* HRP-conjugated goat anti-rabbit IgG (A120-101P). *Detection:* Chemiluminescence with an exposure time of 30 seconds. Lower Panel: Rabbit anti-Actin recombinant monoclonal antibody [BLR057F] (A700-057).



**Detection of human JDP2 by immunohistochemistry.** *Sample:* FFPE section of human spleen. *Antibody:* Rabbit anti-JDP2 recombinant monoclonal antibody [BLR246L] (A700-246). *Secondary:* HRP-conjugated goat anti-rabbit IgG (A120-501P).

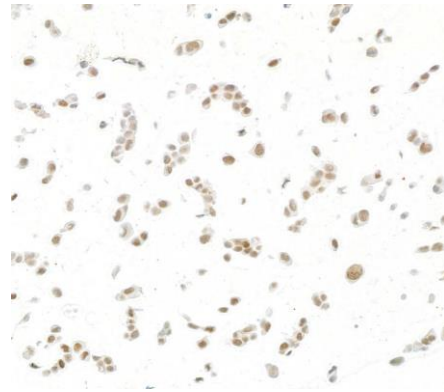


**Detection of human JDP2 by immunohistochemistry.** *Sample:* FFPE section of human skin carcinoma. *Antibody:* Rabbit anti-JDP2 recombinant monoclonal antibody [BLR246L] (A700-246). *Secondary:* HRP-conjugated goat anti-rabbit IgG (A120-501P).



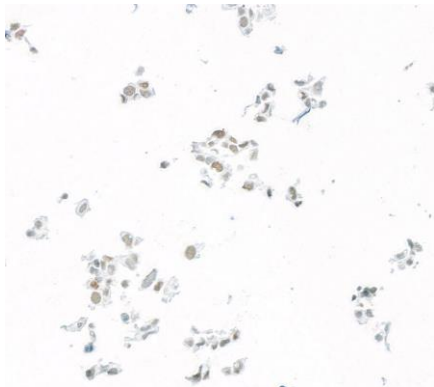
**Detection of mouse JDP2 by immunohistochemistry.**

*Sample:* FFPE section of mouse RenCa tumor. *Antibody:* Rabbit anti-JDP2 recombinant monoclonal antibody [BLR246L] (A700-246). *Secondary:* HRP-conjugated goat anti-rabbit IgG (A120-501P).



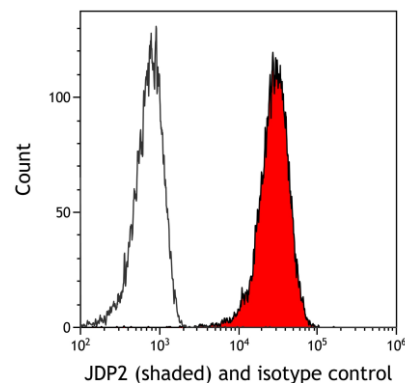
**Detection of human JDP2 by immunocytochemistry.**

*Sample:* FFPE section of human FaDu cells. *Antibody:* Rabbit anti-JDP2 recombinant monoclonal antibody [BLR246L] (A700-246). *Secondary:* HRP-conjugated goat anti-rabbit IgG (A120-501P).

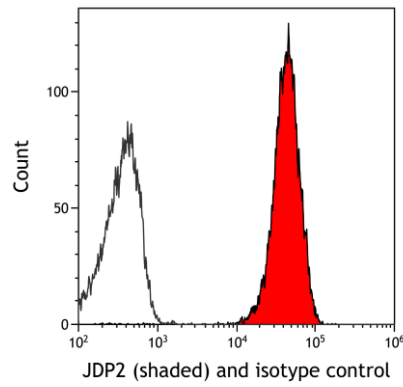


**Detection of mouse JDP2 by immunocytochemistry.**

*Sample:* FFPE section of mouse C2C12 cells. *Antibody:* Rabbit anti-JDP2 recombinant monoclonal antibody [BLR246L] (A700-246). *Secondary:* HRP-conjugated goat anti-rabbit IgG (A120-501P).



**Detection of human JDP2 (shaded) in FaDu cells by flow cytometry.** *Antibody:* Rabbit anti-JDP2 recombinant monoclonal antibody [BLR246L] (A700-246) or isotype control (unshaded). *Secondary:* DyLight® 650-conjugated goat anti-rabbit IgG (A120-101D5).



**Detection of mouse JDP2 (shaded) in CTLL-2 cells by flow cytometry.** *Antibody:* Rabbit anti-JDP2 recombinant monoclonal antibody [BLR246L] (A700-246) or isotype control (unshaded). *Secondary:* DyLight® 650-conjugated goat anti-rabbit IgG (A120-101D5).