



# SZABO SCANDIC

Part of Europa Biosite

## Produktinformation



Forschungsprodukte & Biochemikalien



Zellkultur & Verbrauchsmaterial



Diagnostik & molekulare Diagnostik



Laborgeräte & Service

Weitere Information auf den folgenden Seiten!  
See the following pages for more information!



### Lieferung & Zahlungsart

siehe unsere [Liefer- und Versandbedingungen](#)

### Zuschläge

- Mindermengenzuschlag
- Trockeneiszuschlag
- Gefahrgutzuschlag
- Expressversand

### SZABO-SCANDIC HandelsgmbH

Quellenstraße 110, A-1100 Wien

T. +43(0)1 489 3961-0

F. +43(0)1 489 3961-7

[mail@szabo-scandic.com](mailto:mail@szabo-scandic.com)

[www.szabo-scandic.com](http://www.szabo-scandic.com)

[linkedin.com/company/szaboscandic](https://www.linkedin.com/company/szaboscandic) 

# NEDD-9/CASL/HEF1 Recombinant Monoclonal Antibody [BLR248L]

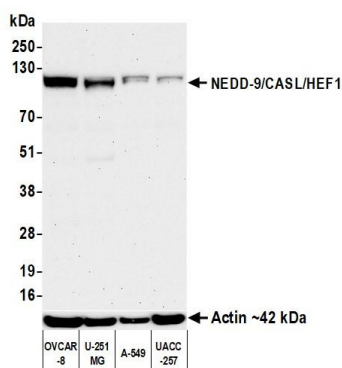
Rabbit Recombinant Monoclonal

Purified		RefSeq ID	NP_006394.1
Catalog No.	A700-248-T	Uniprot ID	Q14511
Lot No.	1	GeneID	4739

---

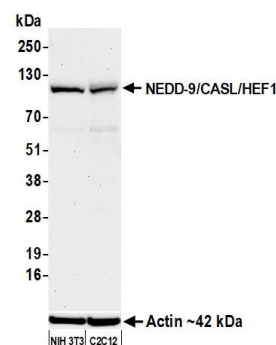
<b>APPLICATIONS</b>	WB, IP
<b>SPECIES REACTIVITY</b>	Human, Mouse
<b>AMOUNT</b>	20 µl (2 blots)
<b>CONCENTRATION</b>	1000 µg/ml
<b>STORAGE/SHELF LIFE</b>	2 – 8°C / 1 year from date of receipt
<b>PHYSICAL STATE</b>	Liquid
<b>BUFFER</b>	Borate Buffered Saline (BBS) pH 8.2 with 0.09% Sodium Azide, BSA-Free
<b>ISOTYPE</b>	IgG
<b>CLONE #</b>	BLR248L
<b>ORIGIN</b>	USA
<b>PRODUCTION PROCEDURES</b>	Recombinant antibody was purified from cell culture supernatant.  Immunogen was a peptide representing a region between residue 150 and 200 of human Enhancer of filamentation 1 (aka NEDD-9) using the numbering given in entry NP_006394.1 (Gene ID 4739).
<b>APPLICATIONS</b>	Centrifuge tube to remove product from lid. Optimal working dilutions should be determined experimentally by the investigator. Prepare working dilution immediately before use.  Western Blot                      1:1,000  Immunoprecipitation          6 µl/1 mg lysate
<b>ADDITIONAL INFO</b>	<a href="https://www.fortislife.com/p/A700-248-T">https://www.fortislife.com/p/A700-248-T</a> Use the link above to view SDS, a current list of citations, and other product specific information.

This document certifies that this product has met all of the quality control standards defined by Bethyl Laboratories, Inc.  
Michael Spencer, PhD Date: March 27, 2023



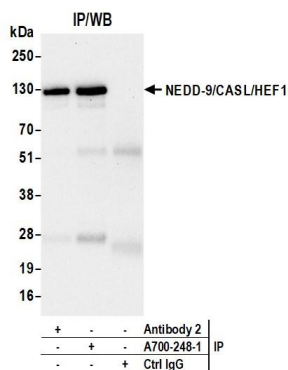
**Detection of human NEDD-9/CASL/HEF1 by western blot.**

*Samples:* Whole cell lysate (50 µg) from OVCAR-8, U-251MG, A-549, and UACC-257 cells prepared using NETN lysis buffer. *Antibody:* Rabbit anti-NEDD-9/CASL/HEF1 recombinant monoclonal antibody [BLR248L] (A700-248 lot 1) used at 1:1000. *Secondary:* HRP-conjugated goat anti-rabbit IgG (A120-101P). *Detection:* Chemiluminescence with an exposure time of 3 minutes. Lower Panel: Rabbit anti-Actin recombinant monoclonal antibody [BLR057F] (A700-057).



**Detection of mouse NEDD-9/CASL/HEF1 by western blot.**

*Samples:* Whole cell lysate (50 µg) from NIH 3T3 and C2C12 cells prepared using NETN lysis buffer. *Antibody:* Rabbit anti-NEDD-9/CASL/HEF1 recombinant monoclonal antibody [BLR248L] (A700-248 lot 1) used at 1:1000. *Secondary:* HRP-conjugated goat anti-rabbit IgG (A120-101P). *Detection:* Chemiluminescence with an exposure time of 3 minutes. Lower Panel: Rabbit anti-Actin recombinant monoclonal antibody [BLR057F] (A700-057).



**Detection of human NEDD-9/CASL/HEF1 by western blot of immunoprecipitates.**

*Samples:* Whole cell lysate (1.0 mg per IP reaction; 20% of IP loaded) from OVCAR-8 cells prepared using NETN lysis buffer. *Antibodies:* Rabbit anti-NEDD-9/CASL/HEF1 recombinant monoclonal antibody [BLR248L] (A700-248 lot 1) used for IP at 6 µl/mg lysate. NEDD-9/CASL/HEF1 was also immunoprecipitated by a second antibody against a different epitope of NEDD-9/CASL/HEF1 (Antibody 2). For blotting immunoprecipitated NEDD-9/CASL/HEF1, A700-248 was used at 1:1000. *Detection:* Chemiluminescence with an exposure time of 30 seconds.