



SZABO SCANDIC

Part of Europa Biosite

Produktinformation



Forschungsprodukte & Biochemikalien



Zellkultur & Verbrauchsmaterial



Diagnostik & molekulare Diagnostik



Laborgeräte & Service

Weitere Information auf den folgenden Seiten!
See the following pages for more information!



Lieferung & Zahlungsart

siehe unsere [Liefer- und Versandbedingungen](#)

Zuschläge

- Mindermengenzuschlag
- Trockeneiszuschlag
- Gefahrgutzuschlag
- Expressversand

SZABO-SCANDIC HandelsgmbH

Quellenstraße 110, A-1100 Wien

T. +43(0)1 489 3961-0

F. +43(0)1 489 3961-7

mail@szabo-scandic.com

www.szabo-scandic.com

[linkedin.com/company/szaboscandic](https://www.linkedin.com/company/szaboscandic) 

KLF4 Recombinant Monoclonal Antibody [BLR250L]

Rabbit Recombinant Monoclonal

Purified		RefSeq ID	NP_004226.3
Catalog No.	A700-250-T	Uniprot ID	O43474
Lot No.	1	GenID	9314

APPLICATIONS	WB, IP, IHC, ICC
SPECIES REACTIVITY	Human, Mouse
AMOUNT	10 µl (5+ tests)
CONCENTRATION	1000 µg/ml
STORAGE/SHELF LIFE	2 – 8°C / 1 year from date of receipt
PHYSICAL STATE	Liquid
BUFFER	Borate Buffered Saline (BBS) pH 8.2 with 0.09% Sodium Azide, BSA-Free
ISOTYPE	IgG
CLONE #	BLR250L
ORIGIN	USA
PRODUCTION PROCEDURES	Recombinant antibody was purified from cell culture supernatant.

Immunogen was a peptide representing a region between residue 75 and 125 of human Krueppel-like factor 4 using the numbering given in entry NP_004226.3 (Gene ID 9314).

APPLICATIONS Centrifuge tube to remove product from lid. Optimal working dilutions should be determined experimentally by the investigator. Prepare working dilution immediately before use.

Western Blot	1:1,000
Immunoprecipitation	6 µl/1 mg lysate
Immunohistochemistry	1:100 to 1:500. Epitope retrieval with citrate buffer pH6.0 is recommended for FFPE tissue sections.
Immunocytochemistry	1:100 to 1:500. Epitope retrieval with citrate buffer pH6.0 is recommended for FFPE cell sections.

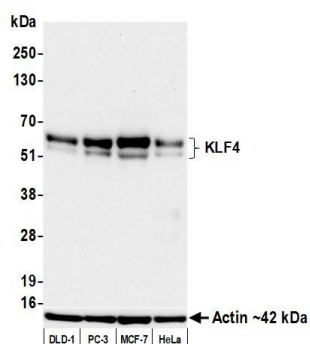
IHC HUMAN CONTROLS Gastric Carcinoma, HNSCC, Ovarian Carcinoma, Skin, Skin Carcinoma, Spleen, Testicular Seminoma, Tonsil, HCT 116 Cells, MCF-7 Cells, NCI-H520 Cells

IHC MOUSE CONTROLS Gut, Testis, CT26 cells, F9 Cells, RenCa Cells

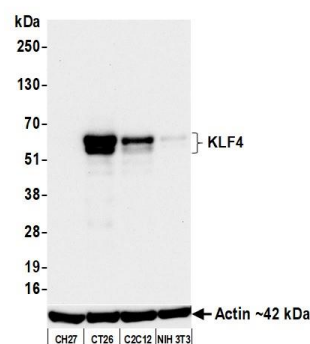
ADDITIONAL INFO <https://www.fortislife.com/p/A700-250-T>

Use the link above to view SDS, a current list of citations, and other product specific information.

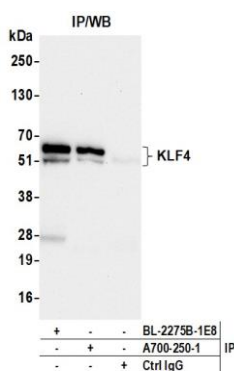
This document certifies that this product has met all of the quality control standards defined by Bethyl Laboratories, Inc.
Michael Spencer, PhD Date: April 28, 2023



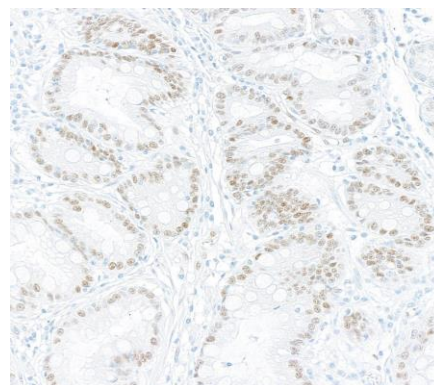
Detection of human KLF4 by western blot. *Samples:* Whole cell lysate (25 µg) from DLD-1, PC-3, MCF-7, and HeLa cells prepared using NETN lysis buffer. *Antibody:* Rabbit anti-KLF4 recombinant monoclonal antibody [BLR250L] (A700-250 lot 1) used at 1:1000. *Secondary:* HRP-conjugated goat anti-rabbit IgG (A120-101P). *Detection:* Chemiluminescence with an exposure time of 30 seconds. Lower Panel: Rabbit anti-Actin recombinant monoclonal antibody [BLR057F] (A700-057).



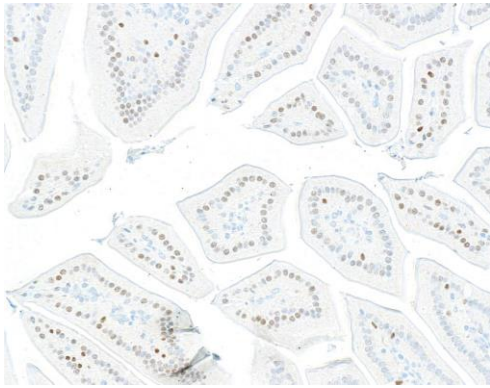
Detection of mouse KLF4 by western blot. *Samples:* Whole cell lysate (25 µg) from CH27, CT26, C2C12, and NIH 3T3 cells prepared using NETN lysis buffer. *Antibody:* Rabbit anti-KLF4 recombinant monoclonal antibody [BLR250L] (A700-250 lot 1) used at 1:1000. *Secondary:* HRP-conjugated goat anti-rabbit IgG (A120-101P). *Detection:* Chemiluminescence with an exposure time of 30 seconds. Lower Panel: Rabbit anti-Actin recombinant monoclonal antibody [BLR057F] (A700-057).



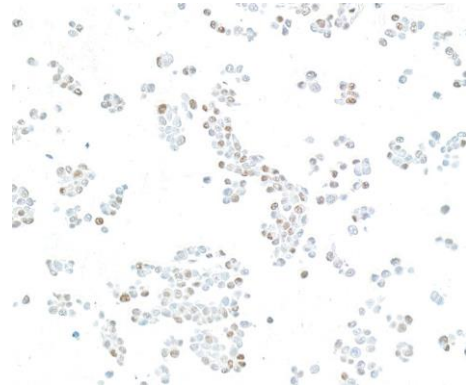
Detection of human KLF4 by western blot of immunoprecipitates. *Samples:* Whole cell lysate (1.0 mg per IP reaction; 20% of IP loaded) from MCF-7 cells prepared using NETN lysis buffer. *Antibodies:* Rabbit anti-KLF4 recombinant monoclonal antibody [BLR250L] (A700-250 lot 1) used for IP at 6 µl/mg lysate. KLF4 was also immunoprecipitated by a second antibody against a different epitope of KLF4 (BL-2275B-1E8). For blotting immunoprecipitated KLF4, A700-250 was used at 1:1000. *Detection:* Chemiluminescence with an exposure time of 30 seconds.



Detection of human KLF4 by immunohistochemistry. *Sample:* FFPE section of human gastric carcinoma. *Antibody:* Rabbit anti-KLF4 recombinant monoclonal antibody [BLR250L] (A700-250). *Secondary:* HRP-conjugated goat anti-rabbit IgG (A120-501P).

**Detection of mouse KLF4 by immunohistochemistry.**

Sample: FFPE section of mouse gut. *Antibody:* Rabbit anti-KLF4 recombinant monoclonal antibody [BLR250L] (A700-250). *Secondary:* HRP-conjugated goat anti-rabbit IgG (A120-501P).

**Detection of human KLF4 by immunocytochemistry.**

Sample: FFPE section of HCT 116 cells. *Antibody:* Rabbit anti-KLF4 recombinant monoclonal antibody [BLR250L] (A700-250). *Secondary:* HRP-conjugated goat anti-rabbit IgG (A120-501P).

**Detection of mouse KLF4 by immunocytochemistry.**

Sample: FFPE section of CT26 cells. *Antibody:* Rabbit anti-KLF4 recombinant monoclonal antibody [BLR250L] (A700-250). *Secondary:* HRP-conjugated goat anti-rabbit IgG (A120-501P).