



SZABO SCANDIC

Part of Europa Biosite

Produktinformation



Forschungsprodukte & Biochemikalien



Zellkultur & Verbrauchsmaterial



Diagnostik & molekulare Diagnostik



Laborgeräte & Service

Weitere Information auf den folgenden Seiten!
See the following pages for more information!



Lieferung & Zahlungsart

siehe unsere [Liefer- und Versandbedingungen](#)

Zuschläge

- Mindermengenzuschlag
- Trockeneiszuschlag
- Gefahrgutzuschlag
- Expressversand

SZABO-SCANDIC HandelsgmbH

Quellenstraße 110, A-1100 Wien

T. +43(0)1 489 3961-0

F. +43(0)1 489 3961-7

mail@szabo-scandic.com

www.szabo-scandic.com

[linkedin.com/company/szaboscandic](https://www.linkedin.com/company/szaboscandic) 

EGFR Recombinant Monoclonal Antibody [BLR251L]

Rabbit Recombinant Monoclonal

Purified		RefSeq ID	NP_005219.2
Catalog No.	A700-251-T	Uniprot ID	P00533
Lot No.	1	GeneID	1956

APPLICATIONS	WB, IP, IHC, ICC
SPECIES REACTIVITY	Human
AMOUNT	10 µl (5+ tests)
CONCENTRATION	200 µg/ml
STORAGE/SHELF LIFE	2 – 8°C / 1 year from date of receipt
PHYSICAL STATE	Liquid
BUFFER	Borate Buffered Saline (BBS) pH 8.2 with 0.1% BSA and 0.09% Sodium Azide
ISOTYPE	IgG
CLONE #	BLR251L
ORIGIN	USA
PRODUCTION PROCEDURES	Recombinant antibody was purified from cell culture supernatant.

Immunogen was a peptide representing a region between residue 1100 and 1150 of human Epidermal growth factor receptor using the numbering given in entry NP_005219.2 (Gene ID 1956).

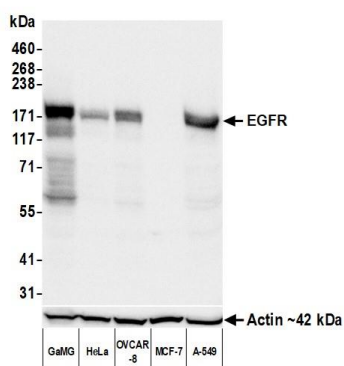
APPLICATIONS Centrifuge tube to remove product from lid. Optimal working dilutions should be determined experimentally by the investigator. Prepare working dilution immediately before use.

Western Blot	1:1,000
Immunoprecipitation	20 µl/1 mg lysate
Immunohistochemistry	1:100 to 1:500. Epitope retrieval with citrate buffer pH 6.0 is recommended for FFPE tissue sections.
Immunocytochemistry	1:100 to 1:500. Epitope retrieval with citrate buffer pH6.0 is recommended for FFPE cell sections.

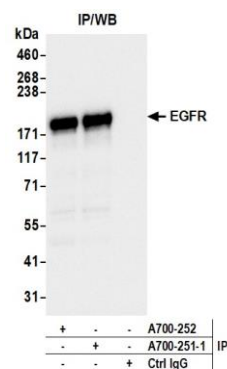
IHC HUMAN CONTROLS Placenta, A-431 Cells, OVCAR-8 Cells

ADDITIONAL INFO <https://www.fortislife.com/p/A700-251-T>
Use the link above to view SDS, a current list of citations, and other product specific information.

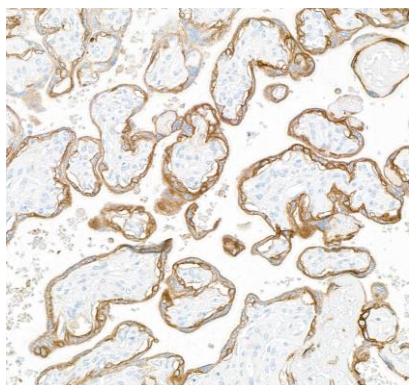
This document certifies that this product has met all of the quality control standards defined by Bethyl Laboratories, Inc.
Michael Spencer, PhD Date: April 28, 2023



Detection of human EGFR by western blot. *Samples:* Whole cell lysate (50 μ g) from GaMG, HeLa, OVCAR-8, MCF-7, and A-549 cells prepared using NETN lysis buffer. *Antibody:* Rabbit anti-EGFR recombinant monoclonal antibody [BLR251L] (A700-251 lot 1) used at 1:1000. *Secondary:* HRP-conjugated goat anti-rabbit IgG (A120-101P). *Detection:* Chemiluminescence with an exposure time of 1 second. Lower Panel: Rabbit anti-Actin recombinant monoclonal antibody [BLR057F] (A700-057).



Detection of human EGFR by western blot of immunoprecipitates. *Samples:* Whole cell lysate (1.0 mg per IP reaction; 20% of IP loaded) from OVCAR-8 cells prepared using NETN lysis buffer. *Antibodies:* Rabbit anti-EGFR recombinant monoclonal antibody [BLR251L] (A700-251 lot 1) used for IP at 20 μ l/mg lysate. EGFR was also immunoprecipitated by a second antibody against a different epitope of EGFR (A700-252). For blotting immunoprecipitated EGFR, A700-251 was used at 1:1000. *Detection:* Chemiluminescence with an exposure time of 1 second.



Detection of human EGFR by immunohistochemistry. *Sample:* FFPE section of human placenta. *Antibody:* Rabbit anti-EGFR recombinant monoclonal antibody [BLR251L] (A700-251). *Secondary:* HRP-conjugated goat anti-rabbit IgG (A120-501P).



Detection of human EGFR by immunocytochemistry. *Sample:* FFPE section of A-431 cells. *Antibody:* Rabbit anti-EGFR recombinant monoclonal antibody [BLR251L] (A700-251). *Secondary:* HRP-conjugated goat anti-rabbit IgG (A120-501P).