



SZABO SCANDIC

Part of Europa Biosite

Produktinformation



Forschungsprodukte & Biochemikalien



Zellkultur & Verbrauchsmaterial



Diagnostik & molekulare Diagnostik



Laborgeräte & Service

Weitere Information auf den folgenden Seiten!
See the following pages for more information!



Lieferung & Zahlungsart

siehe unsere [Liefer- und Versandbedingungen](#)

Zuschläge

- Mindermengenzuschlag
- Trockeneiszuschlag
- Gefahrgutzuschlag
- Expressversand

SZABO-SCANDIC HandelsgmbH

Quellenstraße 110, A-1100 Wien

T. +43(0)1 489 3961-0

F. +43(0)1 489 3961-7

mail@szabo-scandic.com

www.szabo-scandic.com

[linkedin.com/company/szaboscandic](https://www.linkedin.com/company/szaboscandic) 

EGFR Recombinant Monoclonal Antibody [BLR252L]

Rabbit Recombinant Monoclonal

Purified		RefSeq ID	NP_005219.2
Catalog No.	A700-252-T	Uniprot ID	P00533
Lot No.	1	GeneID	1956

APPLICATIONS	WB, IP, IHC, ICC
SPECIES REACTIVITY	Human, Mouse
AMOUNT	10 µl (5+ tests)
CONCENTRATION	1000 µg/ml
STORAGE/SHELF LIFE	2 – 8°C / 1 year from date of receipt
PHYSICAL STATE	Liquid
BUFFER	Borate Buffered Saline (BBS) pH 8.2 with 0.09% Sodium Azide, BSA-Free
ISOTYPE	IgG
CLONE #	BLR252L
ORIGIN	USA
PRODUCTION PROCEDURES	Recombinant antibody was purified from cell culture supernatant.

Immunogen was a peptide representing a region between residue 1160 and the C-terminus (residue 1210) of human Epidermal growth factor receptor using the numbering given in entry NP_005219.2 (Gene ID 1956).

APPLICATIONS Centrifuge tube to remove product from lid. Optimal working dilutions should be determined experimentally by the investigator. Prepare working dilution immediately before use.

Western Blot	1:1,000
Immunoprecipitation	6 µl/1 mg lysate
Immunohistochemistry	1:100 to 1:500. Epitope retrieval with citrate buffer pH 6.0 is recommended for FFPE tissue sections.
Immunocytochemistry	1:100 to 1:500. Epitope retrieval with citrate buffer pH 6.0 is recommended for FFPE cell sections.

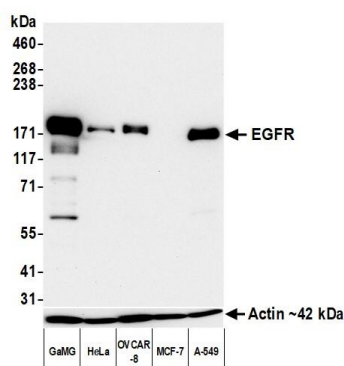
IHC HUMAN CONTROLS Placenta, A-431 Cells, OVCAR-8 Cells

IHC MOUSE CONTROLS Liver, mIMCD-3 Cells

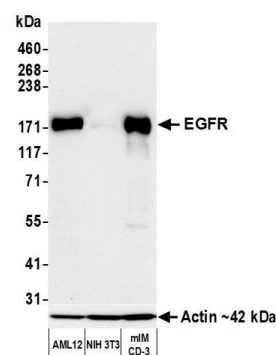
ADDITIONAL INFO <https://www.fortislife.com/p/A700-252-T>

Use the link above to view SDS, a current list of citations, and other product specific information.

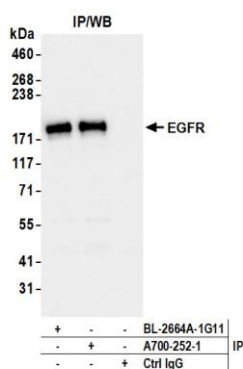
This document certifies that this product has met all of the quality control standards defined by Bethyl Laboratories, Inc.
Michael Spencer, PhD Date: June 30, 2023



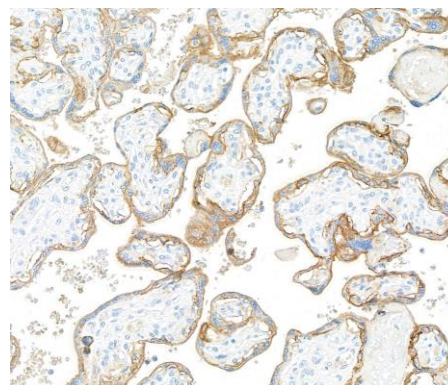
Detection of human EGFR by western blot. *Samples:* Whole cell lysate (10 μ g) from GaMG, HeLa, OVCAR-8, MCF-7, and A-549 cells prepared using NETN lysis buffer. *Antibody:* Rabbit anti-EGFR recombinant monoclonal antibody [BLR252L] (A700-252 lot 1) used at 1:1000. *Secondary:* HRP-conjugated goat anti-rabbit IgG (A120-101P). *Detection:* Chemiluminescence with an exposure time of 30 seconds. Lower Panel: Rabbit anti-Actin recombinant monoclonal antibody [BLR057F] (A700-057).



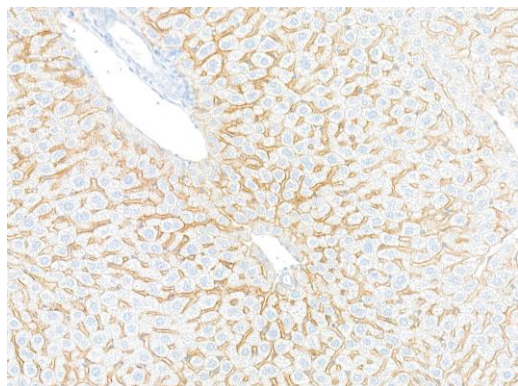
Detection of mouse EGFR by western blot. *Samples:* Whole cell lysate (10 μ g) from AML12, NIH 3T3, and mIMCD-3 cells prepared using NETN lysis buffer. *Antibody:* Rabbit anti-EGFR recombinant monoclonal antibody [BLR252L] (A700-252 lot 1) used at 1:1000. *Secondary:* HRP-conjugated goat anti-rabbit IgG (A120-101P). *Detection:* Chemiluminescence with an exposure time of 30 seconds. Lower Panel: Rabbit anti-Actin recombinant monoclonal antibody [BLR057F] (A700-057).



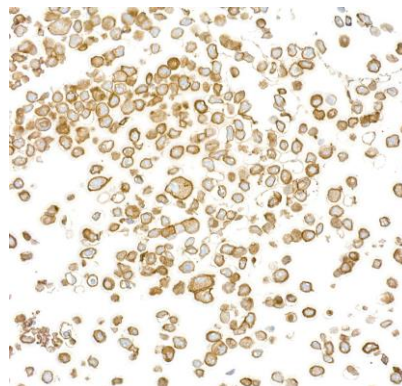
Detection of human EGFR by western blot of immunoprecipitates. *Samples:* Whole cell lysate (1 mg per IP; 10% of IP loaded) from OVCAR-8 cells prepared using NETN lysis buffer. *Antibodies:* Rabbit anti-EGFR recombinant monoclonal antibody [BLR252L] (A700-252 lot 1) used for IP at 6 μ l per reaction. EGFR was also immunoprecipitated by a second antibody against a different epitope of EGFR (BL-2664A-1G11). For blotting immunoprecipitated EGFR, A700-252 was used at 1:1000. *Detection:* Chemiluminescence with an exposure time of 1 second.



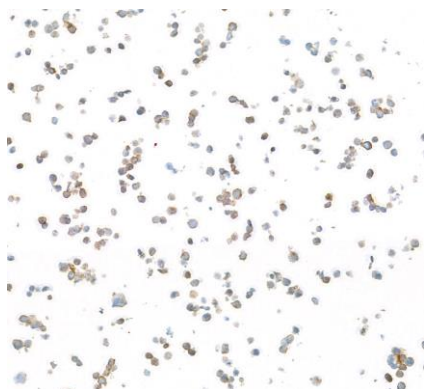
Detection of human EGFR by immunohistochemistry. *Sample:* FFPE section of human placenta. *Antibody:* Rabbit anti-EGFR recombinant monoclonal antibody [BLR252L] (A700-252). *Secondary:* HRP-conjugated goat anti-rabbit IgG (A120-501P).



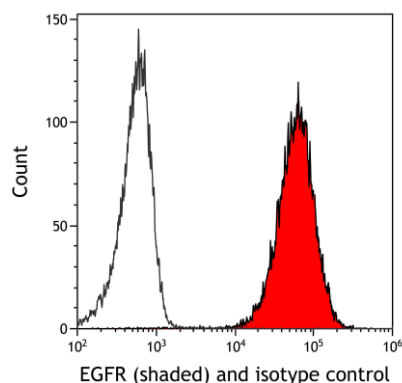
Detection of mouse EGFR by immunohistochemistry.
Sample: FFPE section of mouse liver. *Antibody:* Rabbit anti-EGFR recombinant monoclonal antibody [BLR252L] (A700-252). *Secondary:* HRP-conjugated goat anti-rabbit IgG (A120-501P).



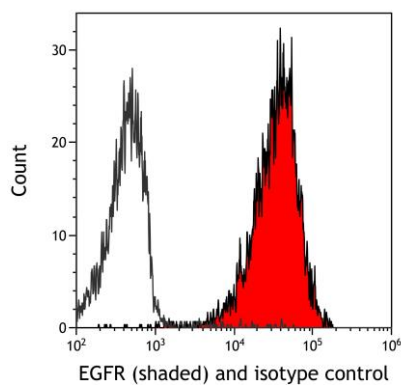
Detection of human EGFR by immunocytochemistry.
Sample: FFPE section of A-431 cells. *Antibody:* Rabbit anti-EGFR recombinant monoclonal antibody [BLR252L] (A700-252). *Secondary:* HRP-conjugated goat anti-rabbit IgG (A120-501P).



Detection of mouse EGFR by immunocytochemistry.
Sample: FFPE section of mIMCD-3 cells. *Antibody:* Rabbit anti-EGFR recombinant monoclonal antibody [BLR252L] (A700-252). *Secondary:* HRP-conjugated goat anti-rabbit IgG (A120-501P).



Detection of human EGFR (shaded) in FaDu cells by flow cytometry. *Antibody:* Rabbit anti-EGFR recombinant monoclonal antibody [BLR252L] (A700-252) or isotype control (unshaded). *Secondary:* DyLight® 650-conjugated goat anti-rabbit IgG (A120-101D5).



Detection of mouse EGFR (shaded) in mIMCD-3 cells by flow cytometry. *Antibody:* Rabbit anti-EGFR recombinant monoclonal antibody [BLR252L] (A700-252) or isotype control (unshaded). *Secondary:* DyLight® 650-conjugated goat anti-rabbit IgG (A120-101D5).