



SZABO SCANDIC

Part of Europa Biosite

Produktinformation



Forschungsprodukte & Biochemikalien



Zellkultur & Verbrauchsmaterial



Diagnostik & molekulare Diagnostik



Laborgeräte & Service

Weitere Information auf den folgenden Seiten!
See the following pages for more information!



Lieferung & Zahlungsart

siehe unsere [Liefer- und Versandbedingungen](#)

Zuschläge

- Mindermengenzuschlag
- Trockeneiszuschlag
- Gefahrgutzuschlag
- Expressversand

SZABO-SCANDIC HandelsgmbH

Quellenstraße 110, A-1100 Wien

T. +43(0)1 489 3961-0

F. +43(0)1 489 3961-7

mail@szabo-scandic.com

www.szabo-scandic.com

[linkedin.com/company/szaboscandic](https://www.linkedin.com/company/szaboscandic) 

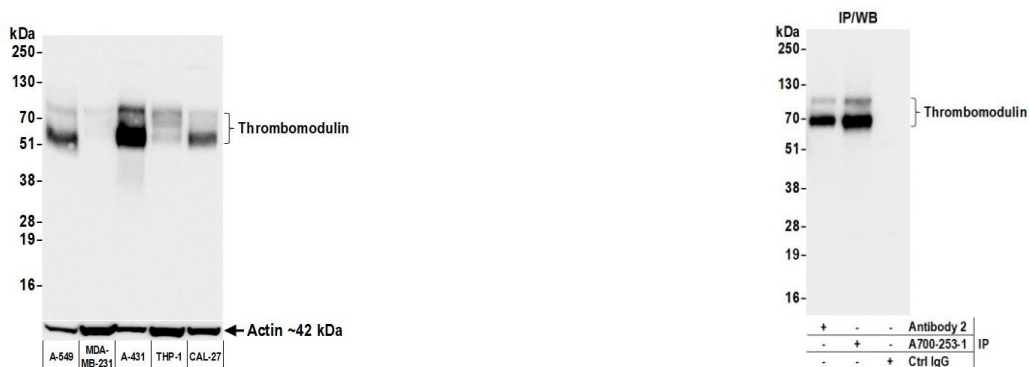
Thrombomodulin Recombinant Monoclonal Antibody [BLR253L]

Rabbit Recombinant Monoclonal

Purified		RefSeq ID	NP_000352.1
Catalog No.	A700-253-T	Uniprot ID	P07204
Lot No.	1	GeneID	7056

APPLICATIONS	WB, IP, IHC, ICC, Flow Cyt
SPECIES REACTIVITY	Human
AMOUNT	10 µl (5+ tests)
CONCENTRATION	500 µg/ml
STORAGE/SHELF LIFE	2 - 8°C / 1 year from date of receipt
PHYSICAL STATE	Liquid
BUFFER	Borate Buffered Saline (BBS) pH 8.2 with 0.1% BSA and 0.09% Sodium Azide
ISOTYPE	IgG
CLONE #	BLR253L
ORIGIN	USA
PRODUCTION PROCEDURES	Recombinant antibody was purified from cell culture supernatant. Immunogen was a recombinant protein representing the extracellular domain of human Thrombomodulin (residues 17-515, NP_000352.1).
APPLICATIONS	Centrifuge tube to remove product from lid. Optimal working dilutions should be determined experimentally by the investigator. Prepare working dilution immediately before use. Western Blot 1:1,000 Immunoprecipitation 12 µl/1 mg lysate Immunohistochemistry 1:100 to 1:500. Epitope retrieval with citrate buffer pH 6.0 is recommended for FFPE tissue sections. Immunocytochemistry 1:100 to 1:500. Epitope retrieval with citrate buffer pH6.0 is recommended for FFPE cell sections. Flow Cytometry Live or cells fixed in 4% formaldehyde and permeabilized with 90% methanol. 0.25 µl per 1 x 10 ⁶ cells.
IHC HUMAN CONTROLS	Lung, Lymph Node, Placenta, Skin, Testis, Tonsil, 5637 Cells, A-431 Cells, A549 Cells, MCF10A Cells, SW954 Cells
ADDITIONAL INFO	https://www.fortislife.com/p/A700-253-T Use the link above to view SDS, a current list of citations, and other product specific information.

This document certifies that this product has met all of the quality control standards defined by Bethyl Laboratories, Inc.
Michael Spencer, PhD Date: April 28, 2023



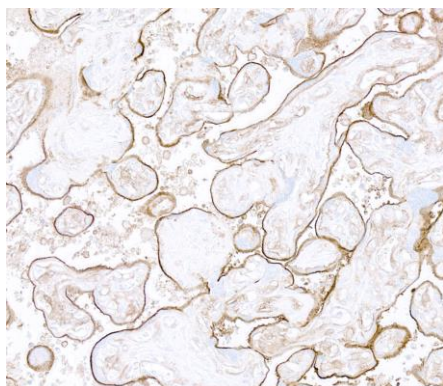
Detection of human Thrombomodulin by western blot.

Samples: Whole cell lysate (50 µg) from A-549, MDA-MB-231, A-431 (25 µg), THP-1, and CAL-27 cells prepared using NETN lysis buffer. *Antibody:* Rabbit anti-Thrombomodulin recombinant monoclonal antibody [BLR253L] (A700-253 lot 1) used at 1:1000. *Secondary:* HRP-conjugated goat anti-rabbit IgG (A120-101P).

Detection: Chemiluminescence with an exposure time of 30 seconds. Lower Panel: Rabbit anti-Actin recombinant monoclonal antibody [BLR057F] (A700-057).

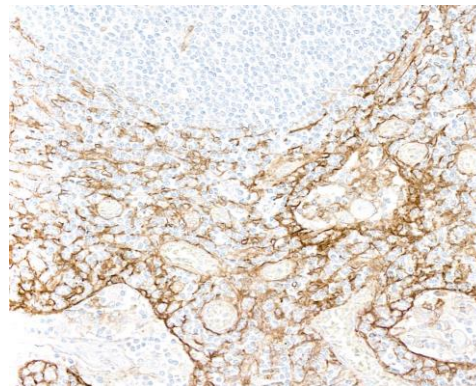
Detection of human Thrombomodulin by western blot of immunoprecipitates.

Samples: Whole cell lysate (1.0 mg per IP reaction; 20% of IP loaded) from A-431 cells prepared using NETN lysis buffer. *Antibodies:* Rabbit anti-Thrombomodulin recombinant monoclonal antibody [BLR253L] (A700-253 lot 1) used for IP at 12 µl/mg lysate. Thrombomodulin was also immunoprecipitated by a second antibody against a different epitope of Thrombomodulin (Antibody 2). For blotting immunoprecipitated Thrombomodulin, A700-253 was used at 1:1000. *Detection:* Chemiluminescence with an exposure time of 10 seconds.



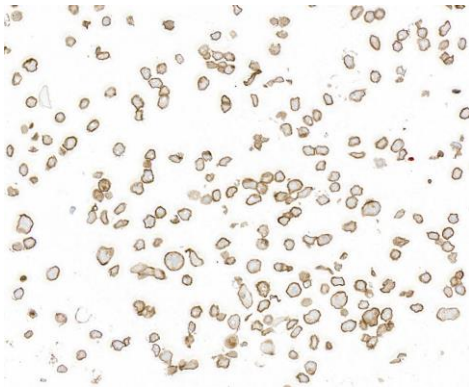
Detection of human Thrombomodulin by immunohistochemistry.

Sample: FFPE section of human placenta. *Antibody:* Rabbit anti-Thrombomodulin recombinant monoclonal antibody [BLR253L] (A700-253). *Secondary:* HRP-conjugated goat anti-rabbit IgG (A120-501P).



Detection of human Thrombomodulin by immunohistochemistry.

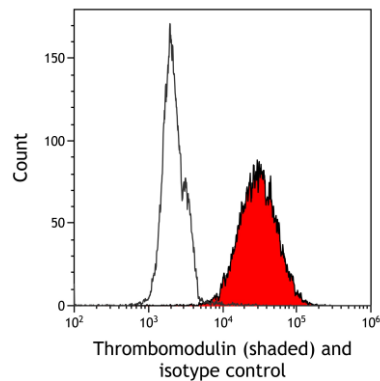
Sample: FFPE section of human lymph node. *Antibody:* Rabbit anti-Thrombomodulin recombinant monoclonal antibody [BLR253L] (A700-253). *Secondary:* HRP-conjugated goat anti-rabbit IgG (A120-501P).



Detection of human Thrombomodulin by immunocytochemistry. *Sample:* FFPE section of human A-431 cells. *Antibody:* Rabbit anti-Thrombomodulin recombinant monoclonal antibody [BLR253L] (A700-253). *Secondary:* HRP-conjugated goat anti-rabbit IgG (A120-501P).



Detection of human Thrombomodulin by immunocytochemistry. *Sample:* FFPE section of human SW954 cells. *Antibody:* Rabbit anti-Thrombomodulin recombinant monoclonal antibody [BLR253L] (A700-253). *Secondary:* HRP-conjugated goat anti-rabbit IgG (A120-501P).



Detection of human Thrombomodulin (shaded) in THP-1 cells by flow cytometry. *Antibody:* Rabbit anti-Thrombomodulin recombinant monoclonal antibody [BLR253L] (A700-253) or isotype control (unshaded). *Secondary:* DyLight® 650-conjugated goat anti-rabbit IgG (A120-101D5).