



# SZABO SCANDIC

Part of Europa Biosite

## Produktinformation



Forschungsprodukte & Biochemikalien



Zellkultur & Verbrauchsmaterial



Diagnostik & molekulare Diagnostik



Laborgeräte & Service

Weitere Information auf den folgenden Seiten!  
See the following pages for more information!



### Lieferung & Zahlungsart

siehe unsere [Liefer- und Versandbedingungen](#)

### Zuschläge

- Mindermengenzuschlag
- Trockeneiszuschlag
- Gefahrgutzuschlag
- Expressversand

### SZABO-SCANDIC HandelsgmbH

Quellenstraße 110, A-1100 Wien

T. +43(0)1 489 3961-0

F. +43(0)1 489 3961-7

[mail@szabo-scandic.com](mailto:mail@szabo-scandic.com)

[www.szabo-scandic.com](http://www.szabo-scandic.com)

[linkedin.com/company/szaboscandic](https://www.linkedin.com/company/szaboscandic) 

# JMJD6 Recombinant Monoclonal Antibody [BLR254L]

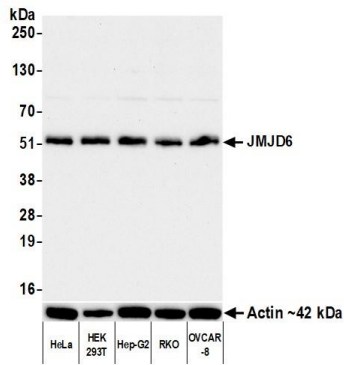
Rabbit Recombinant Monoclonal

Purified		RefSeq ID	NP_055982.2
Catalog No.	A700-254-T	Uniprot ID	Q6NYC1
Lot No.	1	GeneID	23210

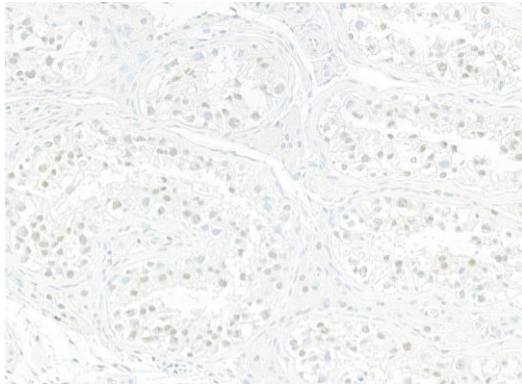
---

<b>APPLICATIONS</b>	WB, IHC, ICC, Flow Cyt
<b>SPECIES REACTIVITY</b>	Human, Mouse, Rat
<b>AMOUNT</b>	10 µl (5+ tests)
<b>CONCENTRATION</b>	1000 µg/ml
<b>STORAGE/SHELF LIFE</b>	2 - 8°C / 1 year from date of receipt
<b>PHYSICAL STATE</b>	Liquid
<b>BUFFER</b>	Borate Buffered Saline (BBS) pH 8.2 with 0.09% Sodium Azide, BSA-Free
<b>ISOTYPE</b>	IgG
<b>CLONE #</b>	BLR254L
<b>ORIGIN</b>	USA
<b>PRODUCTION PROCEDURES</b>	Recombinant antibody was purified from cell culture supernatant.  Immunogen was a peptide representing a region between residue 100 and 150 of human Bifunctional arginine demethylase and lysyl-hydroxylase JMJD6 using the numbering given in entry NP_055982.2 (Gene ID 23210).
<b>APPLICATIONS</b>	Centrifuge tube to remove product from lid. Optimal working dilutions should be determined experimentally by the investigator. Prepare working dilution immediately before use.  Western Blot                      1:1,000 Immunohistochemistry        1:100 to 1:500. Epitope retrieval with citrate buffer pH 6.0 is recommended for FFPE tissue sections. Immunocytochemistry        1:100 to 1:500. Epitope retrieval with citrate buffer pH6.0 is recommended for FFPE cell sections. Flow Cytometry                Fixed in 4% formaldehyde and permeabilized with 90% methanol. 1 µl per 1 x 10 <sup>6</sup> cells.
<b>IHC HUMAN CONTROLS</b>	Skin Carcinoma, Testis, Tonsil, A549 Cells, HT-29 Cells, Malme-3M Cells, OVCAR-8 Cells
<b>IHC MOUSE CONTROLS</b>	Plasmacytoma, Testis, ND7/23 Cells, NIH 3T3 Cells, RenCa Cells
<b>ADDITIONAL INFO</b>	<a href="https://www.fortislife.com/p/A700-254-T">https://www.fortislife.com/p/A700-254-T</a> Use the link above to view SDS, a current list of citations, and other product specific information.

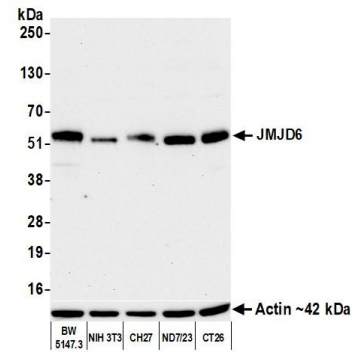
This document certifies that this product has met all of the quality control standards defined by Bethyl Laboratories, Inc.  
Michael Spencer, PhD Date: April 28, 2023



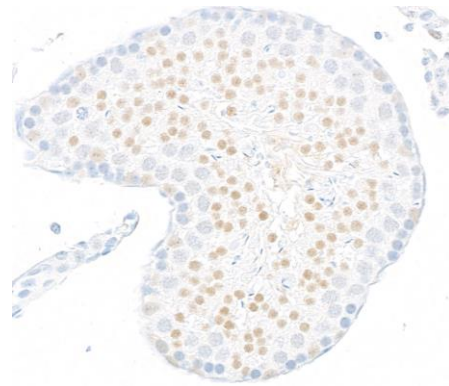
**Detection of human JMJD6 by western blot.** *Samples:* Whole cell lysate (10 µg) from HeLa, HEK293T, Hep-G2, RKO, and OVCAR-8 cells prepared using NETN lysis buffer. *Antibody:* Rabbit anti-JMJD6 recombinant monoclonal antibody [BLR254L] (A700-254 lot 1) used at 1:1000. *Secondary:* HRP-conjugated goat anti-rabbit IgG (A120-101P). *Detection:* Chemiluminescence with an exposure time of 30 seconds. Lower Panel: Rabbit anti-Actin recombinant monoclonal antibody [BLR057F] (A700-057).



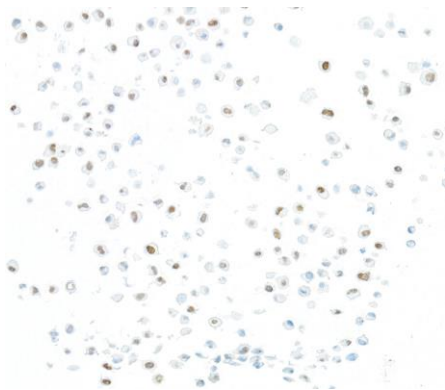
**Detection of human JMJD6 by immunohistochemistry.** *Sample:* FFPE section of human testis. *Antibody:* Rabbit anti-JMJD6 recombinant monoclonal antibody [BLR254L] (A700-254). *Secondary:* HRP-conjugated goat anti-rabbit IgG (A120-501P).



**Detection of mouse JMJD6 by western blot.** *Samples:* Whole cell lysate (10 µg) from BW5147.3, NIH 3T3, CH27, ND7/23, and CT26 cells prepared using NETN lysis buffer. *Antibody:* Rabbit anti-JMJD6 recombinant monoclonal antibody [BLR254L] (A700-254 lot 1) used at 1:1000. *Secondary:* HRP-conjugated goat anti-rabbit IgG (A120-101P). *Detection:* Chemiluminescence with an exposure time of 75 seconds. Lower Panel: Rabbit anti-Actin recombinant monoclonal antibody [BLR057F] (A700-057).

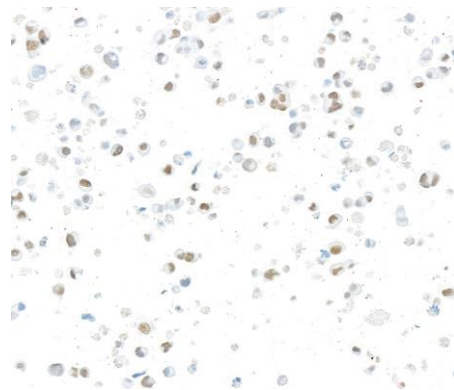


**Detection of mouse JMJD6 by immunohistochemistry.** *Sample:* FFPE section of mouse testis. *Antibody:* Rabbit anti-JMJD6 recombinant monoclonal antibody [BLR254L] (A700-254). *Secondary:* HRP-conjugated goat anti-rabbit IgG (A120-501P).



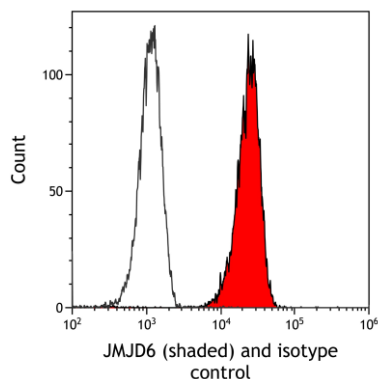
**Detection of human JMJD6 by immunocytochemistry.**

*Sample:* FFPE section of human A549 cells. *Antibody:* Rabbit anti-JMJD6 recombinant monoclonal antibody [BLR254L] (A700-254). *Secondary:* HRP-conjugated goat anti-rabbit IgG (A120-501P).

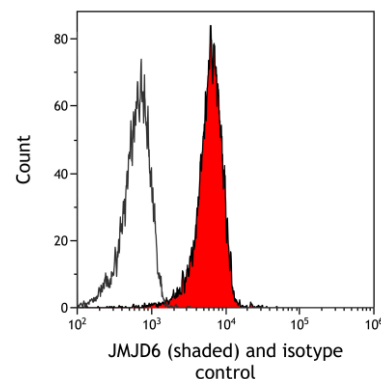


**Detection of mouse JMJD6 by immunocytochemistry.**

*Sample:* FFPE section of mouse ND7/23 cells. *Antibody:* Rabbit anti-JMJD6 recombinant monoclonal antibody [BLR254L] (A700-254). *Secondary:* HRP-conjugated goat anti-rabbit IgG (A120-501P).



**Detection of human JMJD6 (shaded) in A549 cells by flow cytometry.** *Antibody:* Rabbit anti-JMJD6 recombinant monoclonal antibody [BLR254L] (A700-254) or isotype control (unshaded). *Secondary:* DyLight® 650-conjugated goat anti-rabbit IgG (A120-101D5).



**Detection of mouse JMJD6 (shaded) in NIH3T3 cells by flow cytometry.** *Antibody:* Rabbit anti-JMJD6 recombinant monoclonal antibody [BLR254L] (A700-254) or isotype control (unshaded). *Secondary:* DyLight® 650-conjugated goat anti-rabbit IgG (A120-101D5).