



# SZABO SCANDIC

Part of Europa Biosite

## Produktinformation



Forschungsprodukte & Biochemikalien



Zellkultur & Verbrauchsmaterial



Diagnostik & molekulare Diagnostik



Laborgeräte & Service

Weitere Information auf den folgenden Seiten!  
See the following pages for more information!



### Lieferung & Zahlungsart

siehe unsere [Liefer- und Versandbedingungen](#)

### Zuschläge

- Mindermengenzuschlag
- Trockeneiszuschlag
- Gefahrgutzuschlag
- Expressversand

### SZABO-SCANDIC HandelsgmbH

Quellenstraße 110, A-1100 Wien

T. +43(0)1 489 3961-0

F. +43(0)1 489 3961-7

[mail@szabo-scandic.com](mailto:mail@szabo-scandic.com)

[www.szabo-scandic.com](http://www.szabo-scandic.com)

[linkedin.com/company/szaboscandic](https://www.linkedin.com/company/szaboscandic) 

# GLI1 Recombinant Monoclonal Antibody [BLR256L]

Rabbit Recombinant Monoclonal

Purified		RefSeq ID	NP_005260.1
Catalog No.	A700-256-T	Uniprot ID	P08151
Lot No.	1	GeneID	2735

---

<b>APPLICATIONS</b>	WB, IP
<b>SPECIES REACTIVITY</b>	Human
<b>AMOUNT</b>	20 µl (2 blots)
<b>CONCENTRATION</b>	100 µg/ml
<b>STORAGE/SHELF LIFE</b>	2 – 8°C / 1 year from date of receipt
<b>PHYSICAL STATE</b>	Liquid
<b>BUFFER</b>	Borate Buffered Saline (BBS) pH 8.2 with 0.1% BSA and 0.09% Sodium Azide
<b>ISOTYPE</b>	IgG
<b>CLONE #</b>	BLR256L
<b>ORIGIN</b>	USA

**PRODUCTION PROCEDURES** Recombinant antibody was purified from cell culture supernatant.

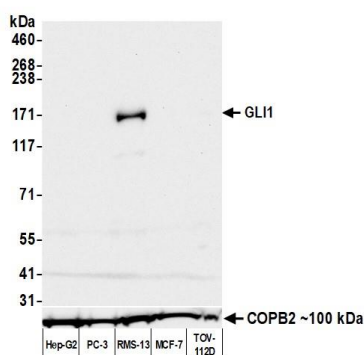
Immunogen was a peptide representing a region between residue 1056 and the C-terminus (residue 1106) of human Zinc finger protein GLI1 using the numbering given in entry NP\_005260.1 (Gene ID 2735).

**APPLICATIONS** Centrifuge tube to remove product from lid. Optimal working dilutions should be determined experimentally by the investigator. Prepare working dilution immediately before use.

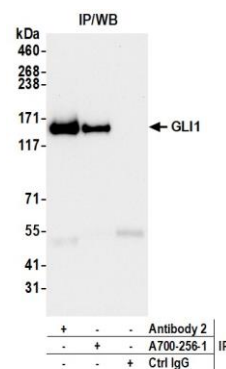
Western Blot	1:1,000
Immunoprecipitation	20 µl/1 mg lysate

**ADDITIONAL INFO** <https://www.fortislife.com/p/A700-256-T>  
Use the link above to view SDS, a current list of citations, and other product specific information.

This document certifies that this product has met all of the quality control standards defined by Bethyl Laboratories, Inc.  
Michael Spencer, PhD Date: April 28, 2023



**Detection of human GLI1 by western blot.** *Samples:* Whole cell lysate (50  $\mu$ g) from Hep-G2, PC-3, RMS-13, MCF-7, and TOV-112D cells prepared using NETN lysis buffer. *Antibody:* Rabbit anti-GLI1 recombinant monoclonal antibody [BLR256L] (A700-256 lot 1) used at 1:1000. *Secondary:* HRP-conjugated goat anti-rabbit IgG (A120-101P). *Detection:* Chemiluminescence with an exposure time of 30 seconds. Lower Panel: Rabbit anti-COPB2 antibody (A304-523A).



**Detection of human GLI1 by western blot of immunoprecipitates.** *Samples:* Whole cell lysate (1.0 mg per IP reaction; 20% of IP loaded) from RMS-13 cells prepared using NETN lysis buffer. *Antibodies:* Rabbit anti-GLI1 recombinant monoclonal antibody [BLR256L] (A700-256 lot 1) used for IP at 20  $\mu$ l/mg lysate. GLI1 was also immunoprecipitated by a second antibody against a different epitope of GLI1 (Antibody 2). For blotting immunoprecipitated GLI1, A700-256 was used at 1:1000. *Detection:* Chemiluminescence with an exposure time of 30 seconds.