



SZABO SCANDIC

Part of Europa Biosite

Produktinformation



Forschungsprodukte & Biochemikalien



Zellkultur & Verbrauchsmaterial



Diagnostik & molekulare Diagnostik



Laborgeräte & Service

Weitere Information auf den folgenden Seiten!
See the following pages for more information!



Lieferung & Zahlungsart

siehe unsere [Liefer- und Versandbedingungen](#)

Zuschläge

- Mindermengenzuschlag
- Trockeneiszuschlag
- Gefahrgutzuschlag
- Expressversand

SZABO-SCANDIC HandelsgmbH

Quellenstraße 110, A-1100 Wien

T. +43(0)1 489 3961-0

F. +43(0)1 489 3961-7

mail@szabo-scandic.com

www.szabo-scandic.com

[linkedin.com/company/szaboscandic](https://www.linkedin.com/company/szaboscandic) 

CTLA4 Recombinant Monoclonal Antibody [BLR257L]

Rabbit Recombinant Monoclonal

Purified		RefSeq ID	NP_005205.2
Catalog No.	A700-257	Uniprot ID	P16410
Lot No.	1	GeneID	1493

APPLICATIONS	WB, IHC, mIF
SPECIES REACTIVITY	Human
AMOUNT	100 µl (50+ tests)
CONCENTRATION	100 µg/ml
STORAGE/SHELF LIFE	2 – 8°C / 1 year from date of receipt
PHYSICAL STATE	Liquid
BUFFER	Borate Buffered Saline (BBS) pH 8.2 with 0.1% BSA and 0.09% Sodium Azide
ISOTYPE	IgG
CLONE #	BLR257L
ORIGIN	USA
PRODUCTION PROCEDURES	Recombinant antibody was purified from cell culture supernatant.

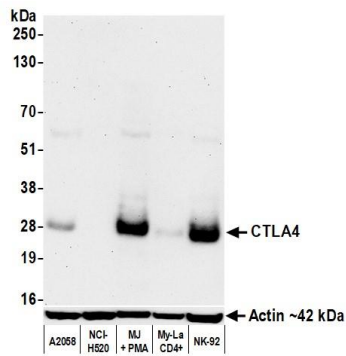
Immunogen was a peptide representing a region between residue 173 and the C-terminus (residue 223) of human Cytotoxic T-lymphocyte protein 4 using the numbering given in entry NP_005205.2 (Gene ID 1493).

APPLICATIONS	Centrifuge tube to remove product from lid. Optimal working dilutions should be determined experimentally by the investigator. Prepare working dilution immediately before use.
	Western Blot 1:1,000
	Immunohistochemistry 1:100 to 1:500. Epitope retrieval with citrate buffer pH 6.0 is recommended for FFPE tissue sections.
	Multiplex Immunofluorescence 1:20 (COMET™)

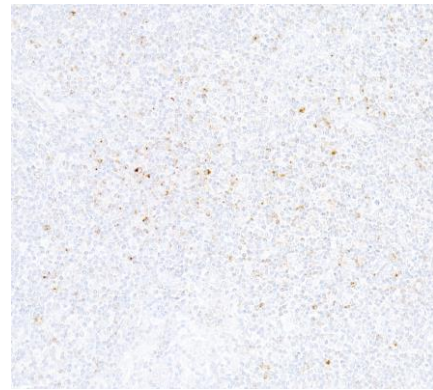
IHC HUMAN CONTROLS Appendix, Lymph Node, Spleen, Tonsil

ADDITIONAL INFO <https://www.fortislife.com/p/A700-257>
Use the link above to view SDS, a current list of citations, and other product specific information.

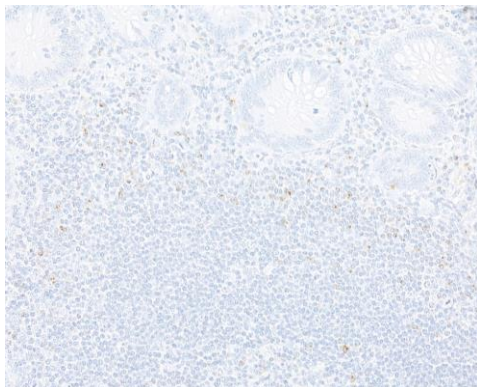
This document certifies that this product has met all of the quality control standards defined by Bethyl Laboratories, Inc.
Michael Spencer, PhD Date: July 3, 2023



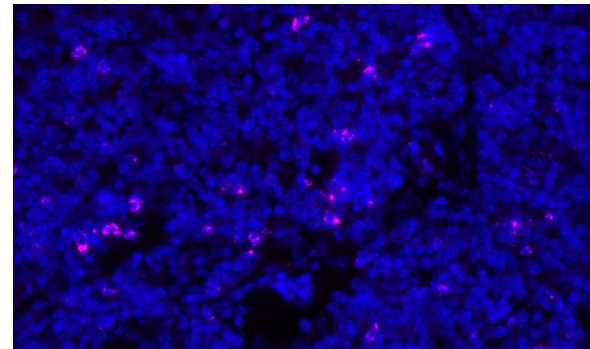
Detection of human CTLA4 by western blot. *Samples:* Whole cell lysate (50 μ g) from A2058, NCI-H520, MJ with 10ng/ml PMA + 500ng/ml Ionomycin for 24hrs, My-La CD4+, and NK-92 cells prepared using NETN lysis buffer. *Antibody:* Rabbit anti-CTLA4 recombinant monoclonal antibody [BLR257L] (A700-257 lot 1) used at 1:1000. *Secondary:* HRP-conjugated goat anti-rabbit IgG (A120-101P). *Detection:* Chemiluminescence with an exposure time of 3 minutes. Lower Panel: Rabbit anti-Actin recombinant monoclonal antibody [BLR057F] (A700-057).



Detection of human CTLA4 by immunohistochemistry. *Sample:* FFPE section of human tonsil. *Antibody:* Rabbit anti-CTLA4 recombinant monoclonal antibody [BLR257L] (A700-257). *Secondary:* HRP-conjugated goat anti-rabbit IgG (A120-501P).



Detection of human CTLA4 by immunohistochemistry. *Sample:* FFPE section of human appendix. *Antibody:* Rabbit anti-CTLA4 recombinant monoclonal antibody [BLR257L] (A700-257). *Secondary:* HRP-conjugated goat anti-rabbit IgG (A120-501P).



Detection of human CTLA4 (magenta) by immunofluorescence. *Sample:* FFPE section of metastatic lymph node. *Antibody:* Rabbit anti-CTLA4 recombinant monoclonal antibody [BLR257L] (A700-257) used at 1:20. *Secondary:* Invitrogen Goat anti-rabbit IgG Alexa Fluor™ Plus 647 1:400. Counterstain: DAPI (blue).