



# SZABO SCANDIC

Part of Europa Biosite

## Produktinformation



Forschungsprodukte & Biochemikalien



Zellkultur & Verbrauchsmaterial



Diagnostik & molekulare Diagnostik



Laborgeräte & Service

Weitere Information auf den folgenden Seiten!  
See the following pages for more information!



### Lieferung & Zahlungsart

siehe unsere [Liefer- und Versandbedingungen](#)

### Zuschläge

- Mindermengenzuschlag
- Trockeneiszuschlag
- Gefahrgutzuschlag
- Expressversand

### SZABO-SCANDIC HandelsgmbH

Quellenstraße 110, A-1100 Wien

T. +43(0)1 489 3961-0

F. +43(0)1 489 3961-7

[mail@szabo-scandic.com](mailto:mail@szabo-scandic.com)

[www.szabo-scandic.com](http://www.szabo-scandic.com)

[linkedin.com/company/szaboscandic](https://www.linkedin.com/company/szaboscandic) 

# LYRIC/AEG1 Recombinant Monoclonal Antibody [BLR258L]

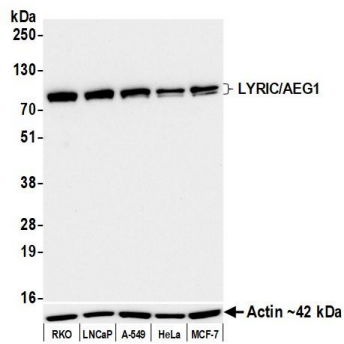
Rabbit Recombinant Monoclonal

Purified		RefSeq ID	NP_848927.2
Catalog No.	A700-258-T	Uniprot ID	Q86UE4
Lot No.	1	GeneID	92140

---

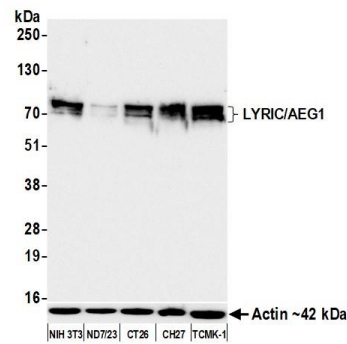
<b>APPLICATIONS</b>	WB, IP, IHC, ICC, Flow Cyt
<b>SPECIES REACTIVITY</b>	Human, Mouse
<b>AMOUNT</b>	10 µl (5+ tests)
<b>CONCENTRATION</b>	250 µg/ml
<b>STORAGE/SHELF LIFE</b>	2 - 8°C / 1 year from date of receipt
<b>PHYSICAL STATE</b>	Liquid
<b>BUFFER</b>	Borate Buffered Saline (BBS) pH 8.2 with 0.1% BSA and 0.09% Sodium Azide
<b>ISOTYPE</b>	IgG
<b>CLONE #</b>	BLR258L
<b>ORIGIN</b>	USA
<b>PRODUCTION PROCEDURES</b>	Recombinant antibody was purified from cell culture supernatant.  Immunogen was a peptide representing a region between residue 450 and 500 of human protein LYRIC using the numbering given in entry NP_848927.2 (Gene ID 92140).
<b>APPLICATIONS</b>	Centrifuge tube to remove product from lid. Optimal working dilutions should be determined experimentally by the investigator. Prepare working dilution immediately before use.  Western Blot                      1:1,000 Immunoprecipitation            20 µl/1 mg lysate Immunohistochemistry        1:50 to 1:500. Epitope retrieval with citrate buffer pH 6.0 is recommended for FFPE tissue sections. Immunocytochemistry        1:50 to 1:500. Epitope retrieval with citrate buffer pH6.0 is recommended for FFPE cell sections. Flow Cytometry                Fixed in 4% formaldehyde and permeabilized with 90% methanol. 1 µl per 1 x 10 <sup>6</sup> cells.
<b>IHC HUMAN CONTROLS</b>	Colon Carcinoma, Liver Carcinoma, Ovarian Carcinoma, LNCap Cells, RKO Cells, SK-N-BE (2) Cells, T-47D Cells
<b>IHC MOUSE CONTROLS</b>	Plasmacytoma, CT26 cells, NIH 3T3 Cells
<b>ADDITIONAL INFO</b>	<a href="https://www.fortislifesciences.com/p/A700-258-T">https://www.fortislifesciences.com/p/A700-258-T</a> Use the link above to view SDS, a current list of citations, and other product specific information.

This document certifies that this product has met all of the quality control standards defined by Bethyl Laboratories, Inc.  
Michael Spencer, PhD Date: April 28, 2023



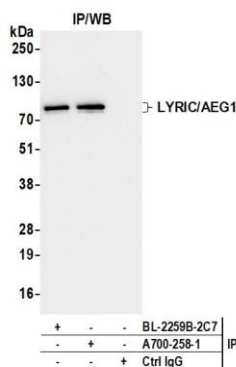
#### Detection of human LYRIC/AEG1 by western blot.

**Samples:** Whole cell lysate (10 µg) from RKO, LNCaP, A-549, HeLa, and MCF-7 cells prepared using NETN lysis buffer. **Antibody:** Rabbit anti-LYRIC/AEG1 recombinant monoclonal antibody [BLR258L] (A700-258 lot 1) used at 1:1000. **Secondary:** HRP-conjugated goat anti-rabbit IgG (A120-101P). **Detection:** Chemiluminescence with an exposure time of 10 seconds. Lower Panel: Rabbit anti-Actin recombinant monoclonal antibody [BLR057F] (A700-057).



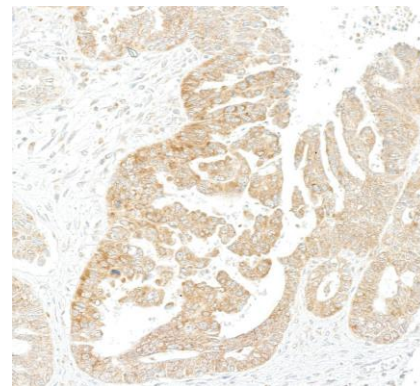
#### Detection of mouse LYRIC/AEG1 by western blot.

**Samples:** Whole cell lysate (25 µg) from NIH 3T3, ND7/23, CT26, CH27, and TCMK-1 cells prepared using NETN lysis buffer. **Antibody:** Rabbit anti-LYRIC/AEG1 recombinant monoclonal antibody [BLR258L] (A700-258 lot 1) used at 1:1000. **Secondary:** HRP-conjugated goat anti-rabbit IgG (A120-101P). **Detection:** Chemiluminescence with an exposure time of 10 seconds. Lower Panel: Rabbit anti-Actin recombinant monoclonal antibody [BLR057F] (A700-057).



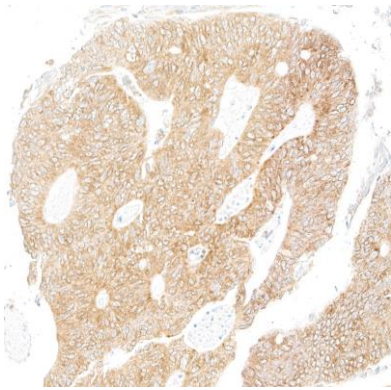
#### Detection of human LYRIC/AEG1 by western blot of immunoprecipitates.

**Samples:** Whole cell lysate (1.0 mg per IP reaction; 20% of IP loaded) from RKO cells prepared using NETN lysis buffer. **Antibodies:** Rabbit anti-LYRIC/AEG1 recombinant monoclonal antibody [BLR258L] (A700-258 lot 1) used for IP at 20 µl/mg lysate. LYRIC/AEG1 was also immunoprecipitated by a second antibody against a different epitope of LYRIC/AEG1 (BL-2259B-2C7). For blotting immunoprecipitated LYRIC/AEG1, A700-258 was used at 1:1000. **Detection:** Chemiluminescence with an exposure time of 10 seconds.

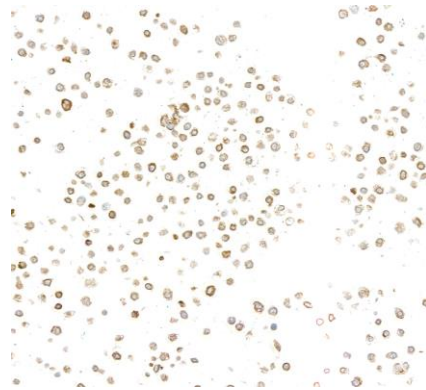


#### Detection of human LYRIC/AEG1 by immunohistochemistry.

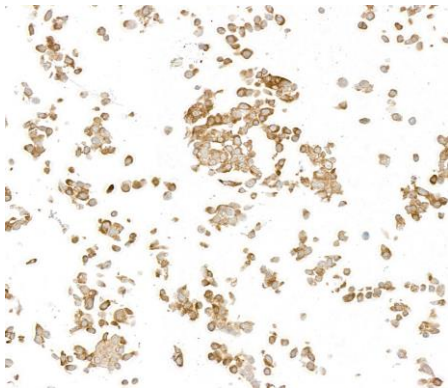
**Sample:** FFPE section of human ovarian carcinoma. **Antibody:** Rabbit anti-LYRIC/AEG1 recombinant monoclonal antibody [BLR258L] (A700-258). **Secondary:** HRP-conjugated goat anti-rabbit IgG (A120-501P).



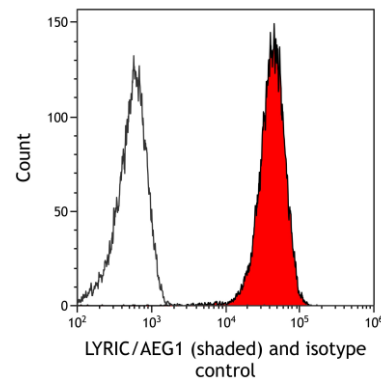
**Detection of human LYRIC/AEG1 by immunohistochemistry.** *Sample:* FFPE section of human colon carcinoma. *Antibody:* Rabbit anti-LYRIC/AEG1 recombinant monoclonal antibody [BLR258L] (A700-258). *Secondary:* HRP-conjugated goat anti-rabbit IgG (A120-501P).



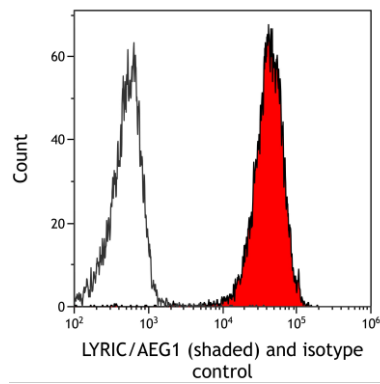
**Detection of human LYRIC/AEG1 by immunocytochemistry.** *Sample:* FFPE section of human RKO cells. *Antibody:* Rabbit anti-LYRIC/AEG1 recombinant monoclonal antibody [BLR258L] (A700-258). *Secondary:* HRP-conjugated goat anti-rabbit IgG (A120-501P).



**Detection of mouse LYRIC/AEG1 by immunocytochemistry.** *Sample:* FFPE section of mouse CT26 cells. *Antibody:* Rabbit anti-LYRIC/AEG1 recombinant monoclonal antibody [BLR258L] (A700-258). *Secondary:* HRP-conjugated goat anti-rabbit IgG (A120-501P).



**Detection of human LYRIC/AEG1 (shaded) in Jurkat cells by flow cytometry.** *Antibody:* Rabbit anti-LYRIC/AEG1 recombinant monoclonal antibody [BLR258L] (A700-258) or isotype control (unshaded). *Secondary:* DyLight® 650-conjugated goat anti-rabbit IgG (A120-101D5).



**Detection of mouse LYRIC/AEG1 (shaded) in NIH3T3 cells by flow cytometry.** *Antibody:* Rabbit anti-LYRIC/AEG1 recombinant monoclonal antibody [BLR258L] (A700-258) or isotype control (unshaded). *Secondary:* DyLight® 650-conjugated goat anti-rabbit IgG (A120-101D5).