



SZABO SCANDIC

Part of Europa Biosite

Produktinformation



Forschungsprodukte & Biochemikalien



Zellkultur & Verbrauchsmaterial



Diagnostik & molekulare Diagnostik



Laborgeräte & Service

Weitere Information auf den folgenden Seiten!
See the following pages for more information!



Lieferung & Zahlungsart

siehe unsere [Liefer- und Versandbedingungen](#)

Zuschläge

- Mindermengenzuschlag
- Trockeneiszuschlag
- Gefahrgutzuschlag
- Expressversand

SZABO-SCANDIC HandelsgmbH

Quellenstraße 110, A-1100 Wien

T. +43(0)1 489 3961-0

F. +43(0)1 489 3961-7

mail@szabo-scandic.com

www.szabo-scandic.com

[linkedin.com/company/szaboscandic](https://www.linkedin.com/company/szaboscandic) 

CD36 Recombinant Monoclonal Antibody [BLR259L]

Rabbit Recombinant Monoclonal

Purified		RefSeq ID	NP_031669.3
Catalog No.	A700-259	Uniprot ID	Q08857
Lot No.	1	GeneID	12491

APPLICATIONS	WB, IHC, ICC
SPECIES REACTIVITY	Mouse
AMOUNT	100 µl (50+ tests)
CONCENTRATION	1000 µg/ml
STORAGE/SHELF LIFE	2 - 8°C / 1 year from date of receipt
PHYSICAL STATE	Liquid
BUFFER	Borate Buffered Saline (BBS) pH 8.2 with 0.09% Sodium Azide, BSA-Free
ISOTYPE	IgG
CLONE #	BLR259L
ORIGIN	USA

PRODUCTION PROCEDURES Recombinant antibody was purified from cell culture supernatant.

Immunogen was a peptide representing a region between residue 275 and 325 of mouse Platelet glycoprotein 4 (aka CD36) using the numbering given in entry NP_031669.3 (Gene ID 12491).

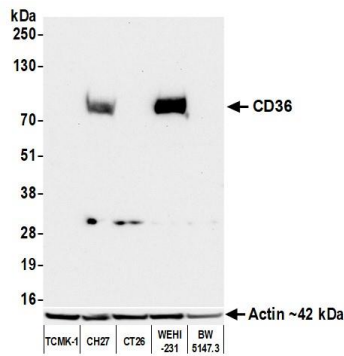
APPLICATIONS Centrifuge tube to remove product from lid. Optimal working dilutions should be determined experimentally by the investigator. Prepare working dilution immediately before use.

Western Blot	1:1,000
Immunohistochemistry	1:100 to 1:500. Epitope retrieval with citrate buffer pH 6.0 is recommended for FFPE tissue sections.
Immunocytochemistry	1:100 to 1:500. Epitope retrieval with citrate buffer pH 6.0 is recommended for FFPE cell sections.

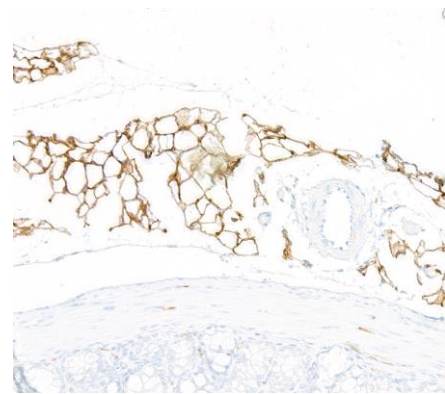
IHC MOUSE CONTROLS Adipose Tissue, Lung, CH27 Cells, RAW 264.7 Cells, WEHI-231 Cells

ADDITIONAL INFO <https://www.fortislife.com/p/A700-259>
Use the link above to view SDS, a current list of citations, and other product specific information.

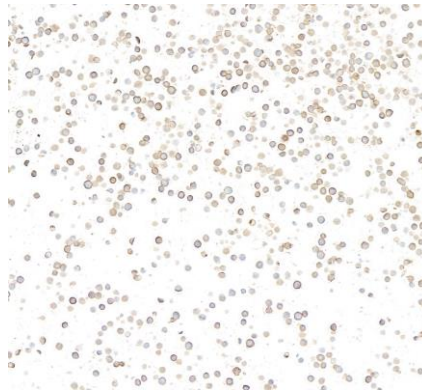
This document certifies that this product has met all of the quality control standards defined by Bethyl Laboratories, Inc.
Michael Spencer, PhD Date: June 29, 2023



Detection of mouse CD36 by western blot. *Samples:* Whole cell lysate (50 μ g) from TCMK-1, CH27, CT26, WEHI-231, and BW5147.3 cells prepared using NETN lysis buffer. *Antibody:* Rabbit anti-CD36 recombinant monoclonal antibody [BLR259L] (A700-259 lot 1) used at 1:1000. *Secondary:* HRP-conjugated goat anti-rabbit IgG (A120-101P). *Detection:* Chemiluminescence with an exposure time of 30 seconds. Lower Panel: Rabbit anti-Actin recombinant monoclonal antibody [BLR057F] (A700-057).



Detection of mouse CD36 by immunohistochemistry. *Sample:* FFPE section of mouse adipose tissue. *Antibody:* Rabbit anti-CD36 recombinant monoclonal antibody [BLR259L] (A700-259). *Secondary:* HRP-conjugated goat anti-rabbit IgG (A120-501P).



Detection of mouse CD36 by immunocytochemistry. *Sample:* FFPE section of WEHI-231 cells. *Antibody:* Rabbit anti-CD36 recombinant monoclonal antibody [BLR259L] (A700-259). *Secondary:* HRP-conjugated goat anti-rabbit IgG (A120-501P).