



SZABO SCANDIC

Part of Europa Biosite

Produktinformation



Forschungsprodukte & Biochemikalien



Zellkultur & Verbrauchsmaterial



Diagnostik & molekulare Diagnostik



Laborgeräte & Service

Weitere Information auf den folgenden Seiten!
See the following pages for more information!



Lieferung & Zahlungsart

siehe unsere [Liefer- und Versandbedingungen](#)

Zuschläge

- Mindermengenzuschlag
- Trockeneiszuschlag
- Gefahrgutzuschlag
- Expressversand

SZABO-SCANDIC HandelsgmbH

Quellenstraße 110, A-1100 Wien

T. +43(0)1 489 3961-0

F. +43(0)1 489 3961-7

mail@szabo-scandic.com

www.szabo-scandic.com

[linkedin.com/company/szaboscandic](https://www.linkedin.com/company/szaboscandic) 

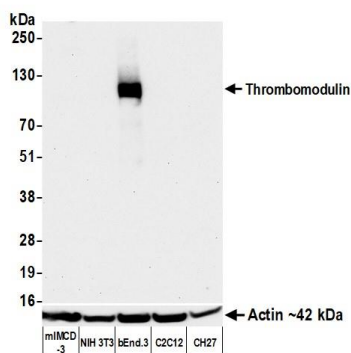
Thrombomodulin Recombinant Monoclonal Antibody [BLR260L]

Rabbit Recombinant Monoclonal

Purified		RefSeq ID	NP_033404.1
Catalog No.	A700-260-T	Uniprot ID	P15306
Lot No.	1	GeneID	21824

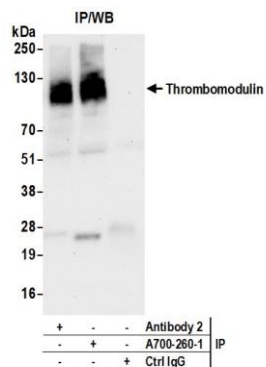
APPLICATIONS	WB, IP, IHC, ICC
SPECIES REACTIVITY	Mouse
AMOUNT	10 µl (5+ tests)
CONCENTRATION	500 µg/ml
STORAGE/SHELF LIFE	2 – 8°C / 1 year from date of receipt
PHYSICAL STATE	Liquid
BUFFER	Borate Buffered Saline (BBS) pH 8.2 with 0.1% BSA and 0.09% Sodium Azide
ISOTYPE	IgG
CLONE #	BLR260L
ORIGIN	USA
PRODUCTION PROCEDURES	Recombinant antibody was purified from cell culture supernatant. Immunogen was a recombinant protein representing the extracellular domain of mouse Thrombomodulin (residues 17–517, NP_033404.1).
APPLICATIONS	Centrifuge tube to remove product from lid. Optimal working dilutions should be determined experimentally by the investigator. Prepare working dilution immediately before use. Western Blot 1:1,000 Immunoprecipitation 12 µl/1 mg lysate Immunohistochemistry 1:100 to 1:500. Epitope retrieval with citrate buffer pH 6.0 is recommended for FFPE tissue sections. Immunocytochemistry 1:100 to 1:500. Epitope retrieval with citrate buffer pH6.0 is recommended for FFPE cell sections.
IHC HUMAN CONTROLS	Kidney, Lung, Spleen, Testis
IHC MOUSE CONTROLS	Gut, 7OZ/3 Cells, bEnd.3 Cells, mIMCD-3 Cells, NIH 3T3 Cells
ADDITIONAL INFO	https://www.fortislife.com/p/A700-260-T Use the link above to view SDS, a current list of citations, and other product specific information.

This document certifies that this product has met all of the quality control standards defined by Bethyl Laboratories, Inc.
Michael Spencer, PhD Date: April 28, 2023



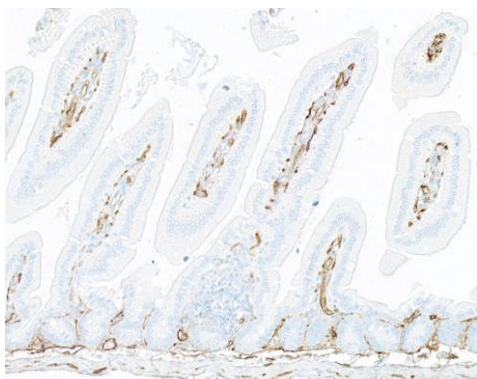
Detection of mouse Thrombomodulin by western blot.

Samples: Whole cell lysate (50 µg) from mIMCD-3, NIH 3T3, bEnd.3, C2C12, and CH27 cells prepared using NETN lysis buffer. *Antibody:* Rabbit anti-Thrombomodulin recombinant monoclonal antibody [BLR260L] (A700-260 lot 1) used at 1:1000. *Secondary:* HRP-conjugated goat anti-rabbit IgG (A120-101P). *Detection:* Chemiluminescence with an exposure time of 3 minutes. Lower Panel: Rabbit anti-Actin recombinant monoclonal antibody [BLR057F] (A700-057).



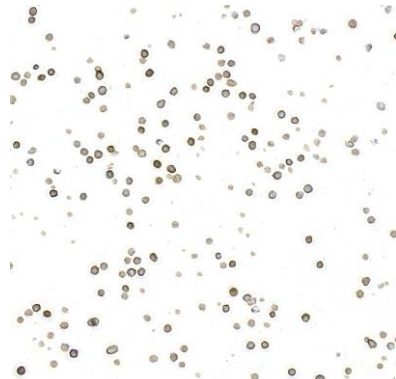
Detection of mouse Thrombomodulin by western blot of immunoprecipitates.

Samples: Whole cell lysate (1.0 mg per IP reaction; 20% of IP loaded) from bEnd.3 cells prepared using NETN lysis buffer. *Antibodies:* Rabbit anti-Thrombomodulin recombinant monoclonal antibody [BLR260L] (A700-260 lot 1) used for IP at 12 µl/mg lysate. Thrombomodulin was also immunoprecipitated by a second antibody against a different epitope of Thrombomodulin (Antibody 2). For blotting immunoprecipitated Thrombomodulin, A700-260 was used at 1:1000. *Detection:* Chemiluminescence with an exposure time of 3 minutes.



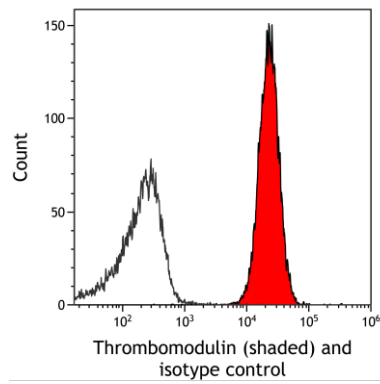
Detection of mouse Thrombomodulin by immunohistochemistry.

Sample: FFPE section of mouse gut. *Antibody:* Rabbit anti-Thrombomodulin recombinant monoclonal antibody [BLR260L] (A700-260). *Secondary:* HRP-conjugated goat anti-rabbit IgG (A120-501P).



Detection of mouse Thrombomodulin by immunocytochemistry.

Sample: FFPE section of mouse 7OZ/3 cells. *Antibody:* Rabbit anti-Thrombomodulin recombinant monoclonal antibody [BLR260L] (A700-260). *Secondary:* HRP-conjugated goat anti-rabbit IgG (A120-501P).



Detection of mouse Thrombomodulin (shaded) in 7OZ/3 cells by flow cytometry. *Antibody:* Rabbit anti-Thrombomodulin recombinant monoclonal antibody [BLR260L] (A700-260) or isotype control (unshaded). *Secondary:* DyLight® 650-conjugated goat anti-rabbit IgG (A120-101D5).