



SZABO SCANDIC

Part of Europa Biosite

Produktinformation



Forschungsprodukte & Biochemikalien



Zellkultur & Verbrauchsmaterial



Diagnostik & molekulare Diagnostik



Laborgeräte & Service

Weitere Information auf den folgenden Seiten!
See the following pages for more information!



Lieferung & Zahlungsart

siehe unsere [Liefer- und Versandbedingungen](#)

Zuschläge

- Mindermengenzuschlag
- Trockeneiszuschlag
- Gefahrgutzuschlag
- Expressversand

SZABO-SCANDIC HandelsgmbH

Quellenstraße 110, A-1100 Wien

T. +43(0)1 489 3961-0

F. +43(0)1 489 3961-7

mail@szabo-scandic.com

www.szabo-scandic.com

[linkedin.com/company/szaboscandic](https://www.linkedin.com/company/szaboscandic) 

LAG3 Recombinant Monoclonal Antibody [BLR261L]

Rabbit Recombinant Monoclonal

Purified		RefSeq ID	NP_032505.1
Catalog No.	A700-261	Uniprot ID	Q61790
Lot No.	1	GenID	16768

APPLICATIONS	WB, IHC, ICC
SPECIES REACTIVITY	Mouse
AMOUNT	100 µl (50+ tests)
CONCENTRATION	1000 µg/ml
STORAGE/SHELF LIFE	2 – 8°C / 1 year from date of receipt
PHYSICAL STATE	Liquid
BUFFER	Borate Buffered Saline (BBS) pH 8.2 with 0.09% Sodium Azide, BSA-Free
ISOTYPE	IgG
CLONE #	BLR261L
ORIGIN	USA
PRODUCTION PROCEDURES	Recombinant antibody was purified from cell culture supernatant.

Immunogen was a peptide representing a region between residue 250 and 300 of mouse Lymphocyte activation gene 3 using the numbering given in entry NP_032505.1 (Gene ID 16768).

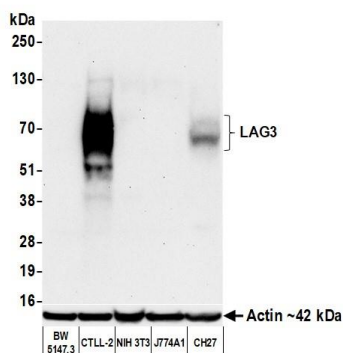
APPLICATIONS Centrifuge tube to remove product from lid. Optimal working dilutions should be determined experimentally by the investigator. Prepare working dilution immediately before use.

Western Blot	1:1,000
Immunohistochemistry	1:100 to 1:500. Epitope retrieval with citrate buffer pH 6.0 is recommended for FFPE tissue sections.
Immunocytochemistry	1:100 to 1:500. Epitope retrieval with citrate buffer pH 6.0 is recommended for FFPE cell sections.

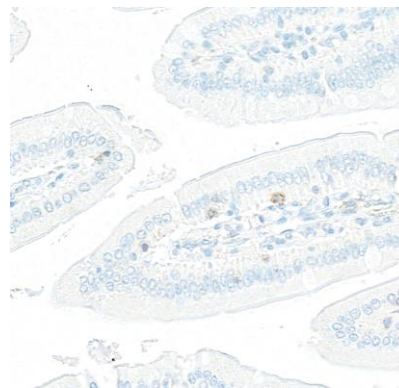
IHC MOUSE CONTROLS Gut, Plasmacytoma, CTLL-2 Cells, J774A1 Cells

ADDITIONAL INFO <https://www.fortislife.com/p/A700-261>
Use the link above to view SDS, a current list of citations, and other product specific information.

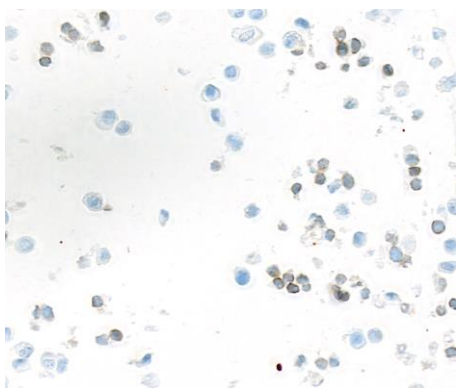
This document certifies that this product has met all of the quality control standards defined by Bethyl Laboratories, Inc.
Michael Spencer, PhD Date: September 13, 2023



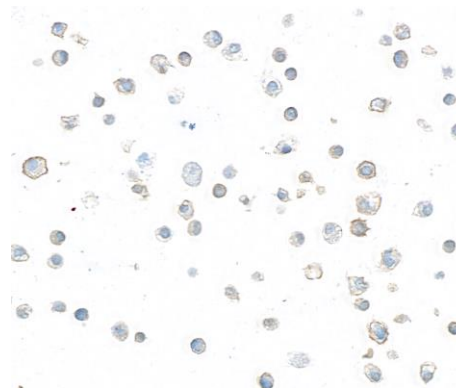
Detection of mouse LAG3 by western blot. *Samples:* Whole cell lysate (50 μ g) from BW5147.3, CTLL-2, NIH 3T3, J774A1, and CH27 cells prepared using NETN lysis buffer. *Antibody:* Rabbit anti-LAG3 recombinant monoclonal antibody [BLR261L] (A700-261 lot 1) used at 1:1000. *Secondary:* HRP-conjugated goat anti-rabbit IgG (A120-101P). *Detection:* Chemiluminescence with an exposure time of 75 seconds. Lower Panel: Rabbit anti-Actin recombinant monoclonal antibody [BLR057F] (A700-057).



Detection of mouse LAG3 by immunohistochemistry. *Sample:* FFPE section of mouse gut. *Antibody:* Rabbit anti-LAG3 recombinant monoclonal antibody [BLR261L] (A700-261 lot 1). *Secondary:* HRP-conjugated goat anti-rabbit IgG (A120-501P).



Detection of mouse LAG3 by immunocytochemistry. *Sample:* FFPE section of J774A.1 cells. *Antibody:* Rabbit anti-LAG3 recombinant monoclonal antibody [BLR261L] (A700-261 lot 1). *Secondary:* HRP-conjugated goat anti-rabbit IgG (A120-501P).



Detection of mouse LAG3 by immunocytochemistry. *Sample:* FFPE section of CTLL-2 cells. *Antibody:* Rabbit anti-LAG3 recombinant monoclonal antibody [BLR261L] (A700-261 lot 1). *Secondary:* HRP-conjugated goat anti-rabbit IgG (A120-501P).