



# SZABO SCANDIC

Part of Europa Biosite

## Produktinformation



Forschungsprodukte & Biochemikalien



Zellkultur & Verbrauchsmaterial



Diagnostik & molekulare Diagnostik



Laborgeräte & Service

Weitere Information auf den folgenden Seiten!  
See the following pages for more information!



### Lieferung & Zahlungsart

siehe unsere [Liefer- und Versandbedingungen](#)

### Zuschläge

- Mindermengenzuschlag
- Trockeneiszuschlag
- Gefahrgutzuschlag
- Expressversand

### SZABO-SCANDIC HandelsgmbH

Quellenstraße 110, A-1100 Wien

T. +43(0)1 489 3961-0

F. +43(0)1 489 3961-7

[mail@szabo-scandic.com](mailto:mail@szabo-scandic.com)

[www.szabo-scandic.com](http://www.szabo-scandic.com)

[linkedin.com/company/szaboscandic](https://www.linkedin.com/company/szaboscandic) 

# c-Kit Recombinant Monoclonal Antibody [BLR263L]

Rabbit Recombinant Monoclonal

Purified		RefSeq ID	NP_000213.1
Catalog No.	A700-263	Uniprot ID	P10721
Lot No.	1	GeneID	3815

---

<b>APPLICATIONS</b>	WB, IHC, ICC
<b>SPECIES REACTIVITY</b>	Human
<b>AMOUNT</b>	100 µl (50+ tests)
<b>CONCENTRATION</b>	1000 µg/ml
<b>STORAGE/SHELF LIFE</b>	2 – 8°C / 1 year from date of receipt
<b>PHYSICAL STATE</b>	Liquid
<b>BUFFER</b>	Borate Buffered Saline (BBS) pH 8.2 with 0.09% Sodium Azide, BSA-Free
<b>ISOTYPE</b>	IgG
<b>CLONE #</b>	BLR263L
<b>ORIGIN</b>	USA
<b>PRODUCTION PROCEDURES</b>	Recombinant antibody was purified from cell culture supernatant.

Immunogen was a peptide representing a region between residue 325 and 375 of human mast/stem cell growth factor receptor Kit (c-Kit) using the numbering given in entry NP\_000213.1 (Gene ID 3815).

**APPLICATIONS** Centrifuge tube to remove product from lid. Optimal working dilutions should be determined experimentally by the investigator. Prepare working dilution immediately before use.

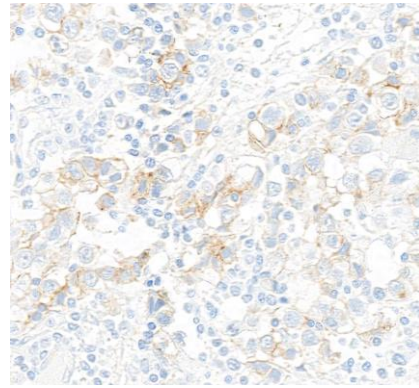
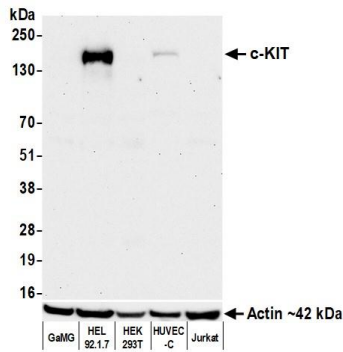
Western Blot	1:1,000
Immunohistochemistry	1:100 to 1:500. Epitope retrieval with citrate buffer pH 6.0 is recommended for FFPE tissue sections.
Immunocytochemistry	1:100 to 1:500. Epitope retrieval with citrate buffer pH 6.0 is recommended for FFPE cell sections.

**IHC HUMAN CONTROLS** Appendix, Breast Carcinoma, Testicular Seminoma, Tonsil, HEL 92.1.7 Cells

**ADDITIONAL INFO** <https://www.fortislife.com/p/A700-263>

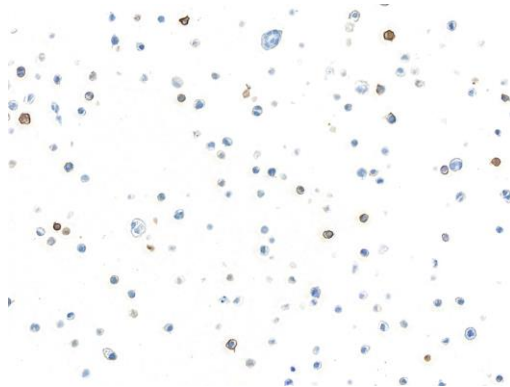
Use the link above to view SDS, a current list of citations, and other product specific information.

This document certifies that this product has met all of the quality control standards defined by Bethyl Laboratories, Inc.  
Michael Spencer, PhD Date: May 31, 2023



**Detection of human c-KIT by western blot.** *Samples:* Whole cell lysate (50  $\mu$ g) from GaMG, HEL 92.1.7, HEK293T, HUVEC-C, and Jurkat cells prepared using NETN lysis buffer. *Antibody:* Rabbit anti-c-KIT recombinant monoclonal antibody [BLR263L] (A700-263 lot 1) used at 1:1000. *Secondary:* HRP-conjugated goat anti-rabbit IgG (A120-101P). *Detection:* Chemiluminescence with an exposure time of 3 minutes. Lower Panel: Rabbit anti-Actin recombinant monoclonal antibody [BLR057F] (A700-057).

**Detection of human c-KIT by immunohistochemistry.** *Sample:* FFPE section of human testicular seminoma. *Antibody:* Rabbit anti-c-KIT recombinant monoclonal antibody [BLR263L] (A700-263). *Secondary:* HRP-conjugated goat anti-rabbit IgG (A120-501P).



**Detection of human c-KIT by immunocytochemistry.** *Sample:* FFPE section of human HEL 92.1.7 cells. *Antibody:* Rabbit anti-c-KIT recombinant monoclonal antibody [BLR263L] (A700-263). *Secondary:* HRP-conjugated goat anti-rabbit IgG (A120-501P).