



SZABO SCANDIC

Part of Europa Biosite

Produktinformation



Forschungsprodukte & Biochemikalien



Zellkultur & Verbrauchsmaterial



Diagnostik & molekulare Diagnostik



Laborgeräte & Service

Weitere Information auf den folgenden Seiten!
See the following pages for more information!



Lieferung & Zahlungsart

siehe unsere [Liefer- und Versandbedingungen](#)

Zuschläge

- Mindermengenzuschlag
- Trockeneiszuschlag
- Gefahrgutzuschlag
- Expressversand

SZABO-SCANDIC HandelsgmbH

Quellenstraße 110, A-1100 Wien

T. +43(0)1 489 3961-0

F. +43(0)1 489 3961-7

mail@szabo-scandic.com

www.szabo-scandic.com

[linkedin.com/company/szaboscandic](https://www.linkedin.com/company/szaboscandic) 

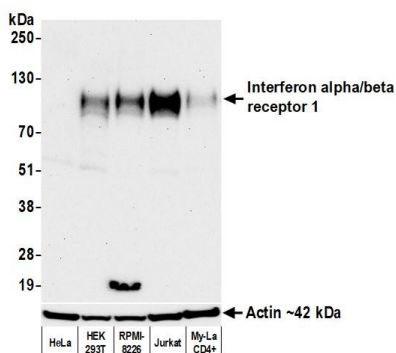
Interferon alpha/ beta receptor 1 Recombinant Monoclonal Antibody [BLR265L]

Rabbit Recombinant Monoclonal

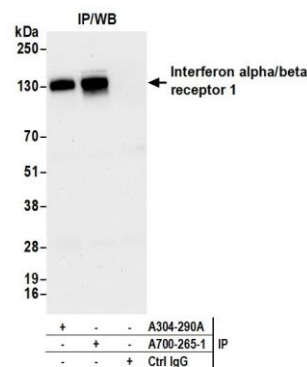
Purified		RefSeq ID	NP_000620.2
Catalog No.	A700-265-T	Uniprot ID	P17181
Lot No.	1	GeneID	3454

APPLICATIONS	WB, IP, IHC
SPECIES REACTIVITY	Human
AMOUNT	10 µl (5+ tests)
CONCENTRATION	400 µg/ml
STORAGE/SHELF LIFE	2 - 8°C / 1 year from date of receipt
PHYSICAL STATE	Liquid
BUFFER	Borate Buffered Saline (BBS) pH 8.2 with 0.1% BSA and 0.09% Sodium Azide
ISOTYPE	IgG
CLONE #	BLR265L
ORIGIN	USA
PRODUCTION PROCEDURES	Recombinant antibody was purified from cell culture supernatant. Immunogen was a recombinant protein representing the extracellular domain of human Interferon alpha/ beta receptor 1 (residues 27-436, NP_000620.2).
APPLICATIONS	Centrifuge tube to remove product from lid. Optimal working dilutions should be determined experimentally by the investigator. Prepare working dilution immediately before use. Western Blot 1:1,000 Immunoprecipitation 15 µl/1 mg lysate Immunohistochemistry 1:1000 to 1:4000. Epitope retrieval with citrate buffer pH 6.0 is recommended for FFPE tissue sections.
IHC HUMAN CONTROLS	Appendix, Lymph Node, Tonsil
ADDITIONAL INFO	https://www.fortislife.com/p/A700-265-T Use the link above to view SDS, a current list of citations, and other product specific information.

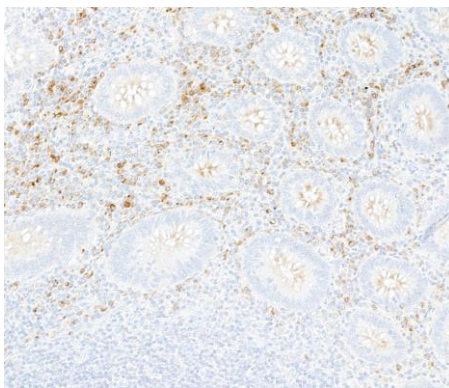
This document certifies that this product has met all of the quality control standards defined by Bethyl Laboratories, Inc.
Michael Spencer, PhD Date: April 28, 2023



Detection of human Interferon alpha/beta receptor 1 by western blot. *Samples:* Whole cell lysate (50 µg) from HeLa, HEK293T, RPMI-8226, Jurkat, and My-La CD4+ cells prepared using NETN lysis buffer. *Antibody:* Rabbit anti-Interferon alpha/beta receptor 1 recombinant monoclonal antibody [BLR265L] (A700-265 lot 1) used at 1:1000. *Secondary:* HRP-conjugated goat anti-rabbit IgG (A120-101P). *Detection:* Chemiluminescence with an exposure time of 3 minutes. Lower Panel: Rabbit anti-Actin recombinant monoclonal antibody [BLR057F] (A700-057).



Detection of human Interferon alpha/beta receptor 1 by western blot of immunoprecipitates. *Samples:* Whole cell lysate (1.0 mg per IP reaction; 20% of IP loaded) from Jurkat cells prepared using NETN lysis buffer. *Antibodies:* Rabbit anti-Interferon alpha/beta receptor 1 recombinant monoclonal antibody [BLR265L] (A700-265 lot 1) used for IP at 15 µl/mg lysate. Interferon alpha/beta receptor 1 was also immunoprecipitated by a second antibody against a different epitope of Interferon alpha/beta receptor 1 (A304-290A). For blotting immunoprecipitated Interferon alpha/beta receptor 1, A700-265 was used at 1:1000. *Detection:* Chemiluminescence with an exposure time of 75 seconds.



Detection of human Interferon alpha/beta receptor 1 by immunohistochemistry. *Sample:* FFPE section of human appendix. *Antibody:* Rabbit anti-Interferon alpha/beta receptor 1 recombinant monoclonal antibody [BLR265L] (A700-265). *Secondary:* HRP-conjugated goat anti-rabbit IgG (A120-501P).