



# SZABO SCANDIC

Part of Europa Biosite

## Produktinformation



Forschungsprodukte & Biochemikalien



Zellkultur & Verbrauchsmaterial



Diagnostik & molekulare Diagnostik



Laborgeräte & Service

Weitere Information auf den folgenden Seiten!  
See the following pages for more information!



### Lieferung & Zahlungsart

siehe unsere [Liefer- und Versandbedingungen](#)

### Zuschläge

- Mindermengenzuschlag
- Trockeneiszuschlag
- Gefahrgutzuschlag
- Expressversand

### SZABO-SCANDIC HandelsgmbH

Quellenstraße 110, A-1100 Wien

T. +43(0)1 489 3961-0

F. +43(0)1 489 3961-7

[mail@szabo-scandic.com](mailto:mail@szabo-scandic.com)

[www.szabo-scandic.com](http://www.szabo-scandic.com)

[linkedin.com/company/szaboscandic](https://www.linkedin.com/company/szaboscandic) 

# Interferon alpha/ beta receptor 1 Recombinant Monoclonal Antibody [BLR265L]

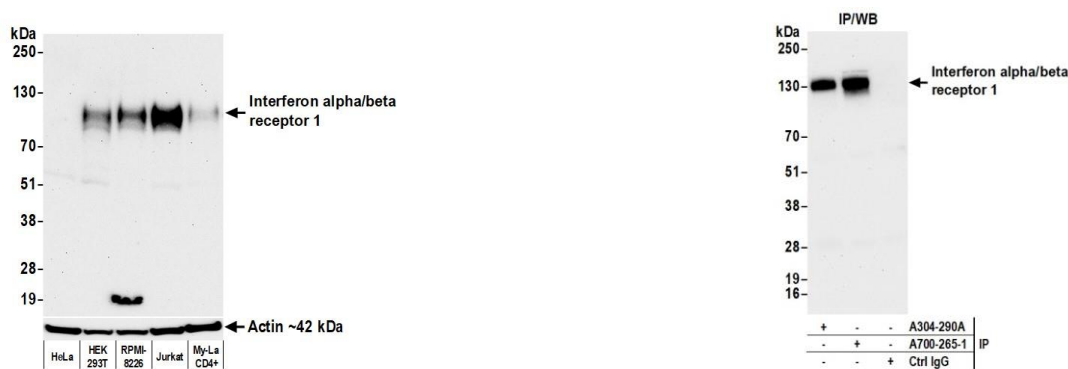
Rabbit Recombinant Monoclonal

Purified		RefSeq ID	NP_000620.2
Catalog No.	A700-265	Uniprot ID	P17181
Lot No.	1	GeneID	3454

---

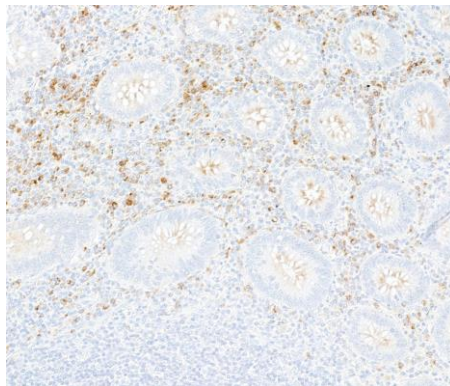
<b>APPLICATIONS</b>	WB, IP, IHC
<b>SPECIES REACTIVITY</b>	Human
<b>AMOUNT</b>	100 µl (50+ tests)
<b>CONCENTRATION</b>	400 µg/ml
<b>STORAGE/SHELF LIFE</b>	2 – 8°C / 1 year from date of receipt
<b>PHYSICAL STATE</b>	Liquid
<b>BUFFER</b>	Borate Buffered Saline (BBS) pH 8.2 with 0.1% BSA and 0.09% Sodium Azide
<b>ISOTYPE</b>	IgG
<b>CLONE #</b>	BLR265L
<b>ORIGIN</b>	USA
<b>PRODUCTION PROCEDURES</b>	Recombinant antibody was purified from cell culture supernatant.  Immunogen was a recombinant protein representing the extracellular domain of human Interferon alpha/ beta receptor 1 (residues 27–436, NP_000620.2).
<b>APPLICATIONS</b>	Centrifuge tube to remove product from lid. Optimal working dilutions should be determined experimentally by the investigator. Prepare working dilution immediately before use.  Western Blot                      1:1,000 Immunoprecipitation          15 µl/1 mg lysate Immunohistochemistry        1:1000 to 1:4000. Epitope retrieval with citrate buffer pH 6.0 is recommended for FFPE tissue sections.
<b>IHC HUMAN CONTROLS</b>	Appendix, Lymph Node, Tonsil
<b>ADDITIONAL INFO</b>	<a href="https://www.fortislife.com/p/A700-265">https://www.fortislife.com/p/A700-265</a> Use the link above to view SDS, a current list of citations, and other product specific information.

This document certifies that this product has met all of the quality control standards defined by Bethyl Laboratories, Inc.  
Michael Spencer, PhD Date: April 28, 2023



**Detection of human Interferon alpha/beta receptor 1 by western blot.** *Samples:* Whole cell lysate (50 µg) from HeLa, HEK293T, RPMI-8226, Jurkat, and My-La CD4+ cells prepared using NETN lysis buffer. *Antibody:* Rabbit anti-Interferon alpha/beta receptor 1 recombinant monoclonal antibody [BLR265L] (A700-265 lot 1) used at 1:1000. *Secondary:* HRP-conjugated goat anti-rabbit IgG (A120-101P). *Detection:* Chemiluminescence with an exposure time of 3 minutes. Lower Panel: Rabbit anti-Actin recombinant monoclonal antibody [BLR057F] (A700-057).

**Detection of human Interferon alpha/beta receptor 1 by western blot of immunoprecipitates.** *Samples:* Whole cell lysate (1.0 mg per IP reaction; 20% of IP loaded) from Jurkat cells prepared using NETN lysis buffer. *Antibodies:* Rabbit anti-Interferon alpha/beta receptor 1 recombinant monoclonal antibody [BLR265L] (A700-265 lot 1) used for IP at 15 µl/mg lysate. Interferon alpha/beta receptor 1 was also immunoprecipitated by a second antibody against a different epitope of Interferon alpha/beta receptor 1 (A304-290A). For blotting immunoprecipitated Interferon alpha/beta receptor 1, A700-265 was used at 1:1000. *Detection:* Chemiluminescence with an exposure time of 75 seconds.



**Detection of human Interferon alpha/beta receptor 1 by immunohistochemistry.** *Sample:* FFPE section of human appendix. *Antibody:* Rabbit anti-Interferon alpha/beta receptor 1 recombinant monoclonal antibody [BLR265L] (A700-265). *Secondary:* HRP-conjugated goat anti-rabbit IgG (A120-501P).