



SZABO SCANDIC

Part of Europa Biosite

Produktinformation



Forschungsprodukte & Biochemikalien



Zellkultur & Verbrauchsmaterial



Diagnostik & molekulare Diagnostik



Laborgeräte & Service

Weitere Information auf den folgenden Seiten!
See the following pages for more information!



Lieferung & Zahlungsart

siehe unsere [Liefer- und Versandbedingungen](#)

Zuschläge

- Mindermengenzuschlag
- Trockeneiszuschlag
- Gefahrgutzuschlag
- Expressversand

SZABO-SCANDIC HandelsgmbH

Quellenstraße 110, A-1100 Wien

T. +43(0)1 489 3961-0

F. +43(0)1 489 3961-7

mail@szabo-scandic.com

www.szabo-scandic.com

[linkedin.com/company/szaboscandic](https://www.linkedin.com/company/szaboscandic) 

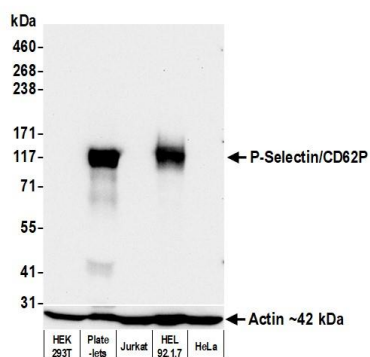
P-Selectin/CD62P Recombinant Monoclonal Antibody [BLR267L]

Rabbit Recombinant Monoclonal

Purified		RefSeq ID	NP_002996.2
Catalog No.	A700-267-T	Uniprot ID	P16109
Lot No.	1	GeneID	6403

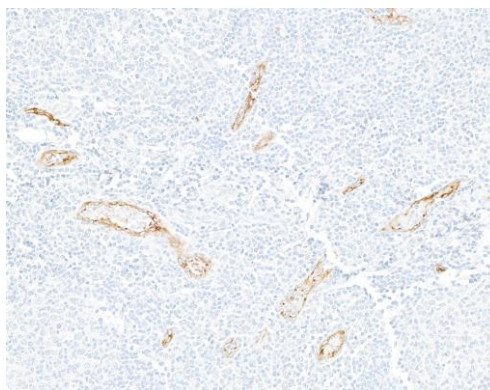
APPLICATIONS	WB, IHC, ICC, mIF
SPECIES REACTIVITY	Human
AMOUNT	10 µl (5+ tests)
CONCENTRATION	1000 µg/ml
STORAGE/SHELF LIFE	2 – 8°C / 1 year from date of receipt
PHYSICAL STATE	Liquid
BUFFER	Borate Buffered Saline (BBS) pH 8.2 with 0.09% Sodium Azide, BSA-Free
ISOTYPE	IgG
CLONE #	BLR267L
ORIGIN	USA
PRODUCTION PROCEDURES	Recombinant antibody was purified from cell culture supernatant. Immunogen was a recombinant protein representing the extracellular domain of human P-Selectin/CD62P (residues 42-771, NP_002996.2).
APPLICATIONS	Centrifuge tube to remove product from lid. Optimal working dilutions should be determined experimentally by the investigator. Prepare working dilution immediately before use. Western Blot 1:1,000 Immunohistochemistry 1:100 to 1:500. Epitope retrieval with citrate buffer pH 6.0 is recommended for FFPE tissue sections. Immunocytochemistry 1:100 to 1:500. Epitope retrieval with citrate buffer pH 6.0 is recommended for FFPE cell sections. Multiplex Immunofluorescence 1:100 (COMET™)
IHC HUMAN CONTROLS	Appendix, Colon Carcinoma, Skin Carcinoma, Tonsil, HEL 92.1.7 Cells
ADDITIONAL INFO	https://www.fortislife.com/p/A700-267-T Use the link above to view SDS, a current list of citations, and other product specific information.

This document certifies that this product has met all of the quality control standards defined by Bethyl Laboratories, Inc.
Michael Spencer, PhD Date: July 3, 2023



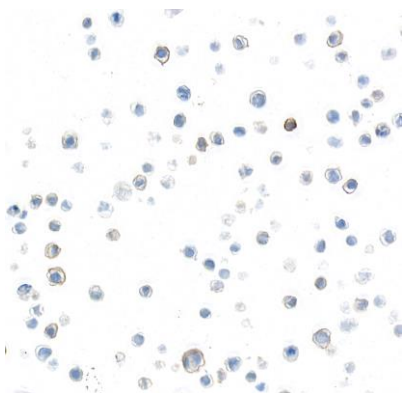
Detection of human P-Selectin/CD62P by western blot.

Samples: Whole cell lysate (25 µg) from HEK293T, Platelets, Jurkat, HEL 92.1.7, and HeLa cells prepared using NETN lysis buffer. *Antibody:* Rabbit anti-P-Selectin/CD62P recombinant monoclonal antibody [BLR267L] (A700-267 lot 1) used at 1:1000. *Secondary:* HRP-conjugated goat anti-rabbit IgG (A120-101P). *Detection:* Chemiluminescence with an exposure time of 30 seconds. Lower Panel: Rabbit anti-Actin recombinant monoclonal antibody [BLR057F] (A700-057).



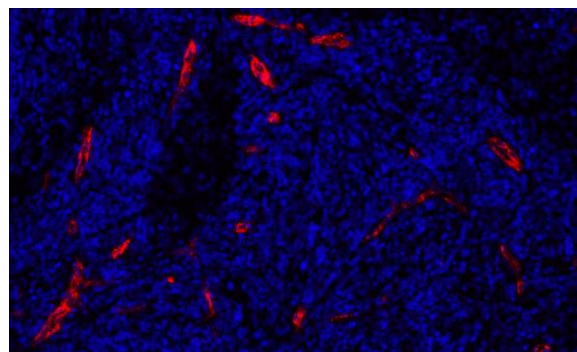
Detection of human P-Selectin/CD62P by immunohistochemistry.

Sample: FFPE section of tonsil. *Antibody:* Rabbit anti-P-Selectin/CD62P recombinant monoclonal antibody [BLR267L] (A700-267). *Secondary:* HRP-conjugated goat anti-rabbit IgG (A120-501P).



Detection of human P-Selectin/CD62P by immunocytochemistry.

Sample: FFPE section of HEL 92.1.7 cells. *Antibody:* Rabbit anti-P-Selectin/CD62P recombinant monoclonal antibody [BLR267L] (A700-267). *Secondary:* HRP-conjugated goat anti-rabbit IgG (A120-501P).



Detection of human P-Selectin/CD62P (red) by immunofluorescence.

Sample: FFPE section of metastatic lymph node. *Antibody:* Rabbit anti-P-Selectin/CD62P recombinant monoclonal antibody [BLR267L] (A700-267) used at 1:100. *Secondary:* Invitrogen Goat anti-rabbit IgG Alexa Fluor™ Plus 647 1:400. Counterstain: DAPI (blue).