



# SZABO SCANDIC

Part of Europa Biosite

## Produktinformation



Forschungsprodukte & Biochemikalien



Zellkultur & Verbrauchsmaterial



Diagnostik & molekulare Diagnostik



Laborgeräte & Service

Weitere Information auf den folgenden Seiten!  
See the following pages for more information!



### Lieferung & Zahlungsart

siehe unsere [Liefer- und Versandbedingungen](#)

### Zuschläge

- Mindermengenzuschlag
- Trockeneiszuschlag
- Gefahrgutzuschlag
- Expressversand

### SZABO-SCANDIC HandelsgmbH

Quellenstraße 110, A-1100 Wien

T. +43(0)1 489 3961-0

F. +43(0)1 489 3961-7

[mail@szabo-scandic.com](mailto:mail@szabo-scandic.com)

[www.szabo-scandic.com](http://www.szabo-scandic.com)

[linkedin.com/company/szaboscandic](https://www.linkedin.com/company/szaboscandic) 

# B7-H6 Recombinant Monoclonal Antibody [BLR271L]

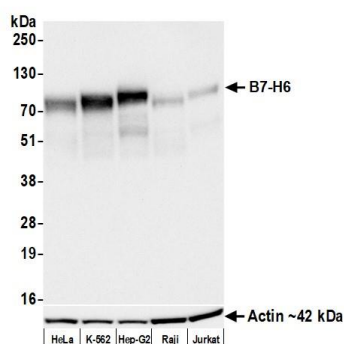
Rabbit Recombinant Monoclonal

Purified		RefSeq ID	NP_001189368.1
Catalog No.	A700-271-T	Uniprot ID	Q68D85
Lot No.	1	GeneID	374383

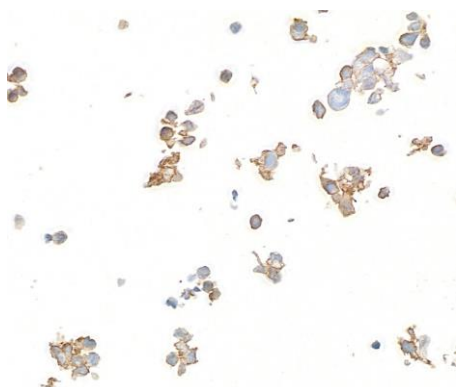
---

<b>APPLICATIONS</b>	WB, IP, ICC
<b>SPECIES REACTIVITY</b>	Human
<b>AMOUNT</b>	10 µl (5+ tests)
<b>CONCENTRATION</b>	1000 µg/ml
<b>STORAGE/SHELF LIFE</b>	2 - 8°C / 1 year from date of receipt
<b>PHYSICAL STATE</b>	Liquid
<b>BUFFER</b>	Borate Buffered Saline (BBS) pH 8.2 with 0.09% Sodium Azide, BSA-Free
<b>ISOTYPE</b>	IgG
<b>CLONE #</b>	BLR271L
<b>ORIGIN</b>	USA
<b>PRODUCTION PROCEDURES</b>	Recombinant antibody was purified from cell culture supernatant.  Immunogen was a recombinant protein representing the extracellular domain of human B7-H6 (residues 25-262, NP_001189368.1).
<b>APPLICATIONS</b>	Centrifuge tube to remove product from lid. Optimal working dilutions should be determined experimentally by the investigator. Prepare working dilution immediately before use.  Western Blot                      1:1,000 Immunoprecipitation            6 µl/1 mg lysate Immunocytochemistry          1:100 to 1:500. Epitope retrieval with citrate buffer pH 6.0 is recommended for FFPE cell sections.
<b>IHC HUMAN CONTROLS</b>	HEK293T Cells, Hep-G2 Cells
<b>ADDITIONAL INFO</b>	<a href="https://www.fortislife.com/p/A700-271-T">https://www.fortislife.com/p/A700-271-T</a> Use the link above to view SDS, a current list of citations, and other product specific information.

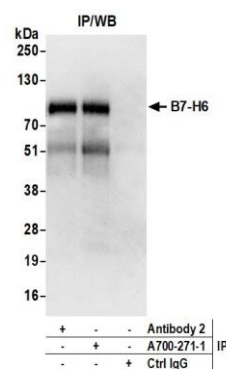
This document certifies that this product has met all of the quality control standards defined by Bethyl Laboratories, Inc.  
Michael Spencer, PhD Date: June 30, 2023



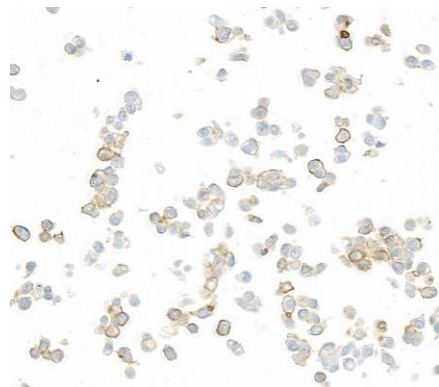
**Detection of human B7-H6 by western blot.** *Samples:* Whole cell lysate (25  $\mu$ g) from HeLa, K-562, Hep-G2, Raji, and Jurkat cells prepared using NETN lysis buffer. *Antibody:* Rabbit anti-B7-H6 recombinant monoclonal antibody [BLR271L] (A700-271 lot 1) used at 1:1000. *Secondary:* HRP-conjugated goat anti-rabbit IgG (A120-101P). *Detection:* Chemiluminescence with an exposure time of 10 seconds. Lower Panel: Rabbit anti-Actin recombinant monoclonal antibody [BLR057F] (A700-057).



**Detection of human B7-H6 by immunocytochemistry.** *Sample:* FFPE section of HEK293T cells. *Antibody:* Rabbit anti-B7-H6 recombinant monoclonal antibody [BLR271L] (A700-271). *Secondary:* HRP-conjugated goat anti-rabbit IgG (A120-501P).



**Detection of human B7-H6 by western blot of immunoprecipitates.** *Samples:* Whole cell lysate (1.0 mg per IP reaction; 20% of IP loaded) from K-562 cells prepared using NETN lysis buffer. *Antibodies:* Rabbit anti-B7-H6 recombinant monoclonal antibody [BLR271L] (A700-271 lot 1) used for IP at 6  $\mu$ l/mg lysate. B7-H6 was also immunoprecipitated by a second antibody against a different epitope of B7-H6 (Antibody 2). For blotting immunoprecipitated B7-H6, A700-271 was used at 1:1000. *Detection:* Chemiluminescence with an exposure time of 30 seconds.



**Detection of human B7-H6 by immunocytochemistry.** *Sample:* FFPE section of Hep-G2 cells. *Antibody:* Rabbit anti-B7-H6 recombinant monoclonal antibody [BLR271L] (A700-271). *Secondary:* HRP-conjugated goat anti-rabbit IgG (A120-501P).