



# SZABO SCANDIC

Part of Europa Biosite

## Produktinformation



Forschungsprodukte & Biochemikalien



Zellkultur & Verbrauchsmaterial



Diagnostik & molekulare Diagnostik



Laborgeräte & Service

Weitere Information auf den folgenden Seiten!  
See the following pages for more information!



### Lieferung & Zahlungsart

siehe unsere [Liefer- und Versandbedingungen](#)

### Zuschläge

- Mindermengenzuschlag
- Trockeneiszuschlag
- Gefahrgutzuschlag
- Expressversand

### SZABO-SCANDIC HandelsgmbH

Quellenstraße 110, A-1100 Wien

T. +43(0)1 489 3961-0

F. +43(0)1 489 3961-7

[mail@szabo-scandic.com](mailto:mail@szabo-scandic.com)

[www.szabo-scandic.com](http://www.szabo-scandic.com)

[linkedin.com/company/szaboscandic](https://www.linkedin.com/company/szaboscandic) 

# INSM1 Recombinant Monoclonal Antibody [BLR272L]

Rabbit Recombinant Monoclonal

Purified		RefSeq ID	NP_002187.1
Catalog No.	A700-272-T	Uniprot ID	Q01101
Lot No.	1	GeneID	3642

---

<b>APPLICATIONS</b>	WB, IHC, ICC
<b>SPECIES REACTIVITY</b>	Human, Mouse
<b>AMOUNT</b>	10 µl (5+ tests)
<b>CONCENTRATION</b>	1000 µg/ml
<b>STORAGE/SHELF LIFE</b>	2 - 8°C / 1 year from date of receipt
<b>PHYSICAL STATE</b>	Liquid
<b>BUFFER</b>	Borate Buffered Saline (BBS) pH 8.2 with 0.09% Sodium Azide, BSA-Free
<b>ISOTYPE</b>	IgG
<b>CLONE #</b>	BLR272L
<b>ORIGIN</b>	USA
<b>PRODUCTION PROCEDURES</b>	Recombinant antibody was purified from cell culture supernatant.

Immunogen was a peptide representing a region between residue 50 and 100 of human Insulinoma-associated protein 1 (aka INSM1) using the numbering given in entry NP\_002187.1 (Gene ID 3642).

**APPLICATIONS** Centrifuge tube to remove product from lid. Optimal working dilutions should be determined experimentally by the investigator. Prepare working dilution immediately before use.

Western Blot	1:1,000
Immunohistochemistry	1:100 to 1:500. Epitope retrieval with citrate buffer pH 6.0 is recommended for FFPE tissue sections.
Immunocytochemistry	1:100 to 1:500. Epitope retrieval with citrate buffer pH 6.0 is recommended for FFPE cell sections.

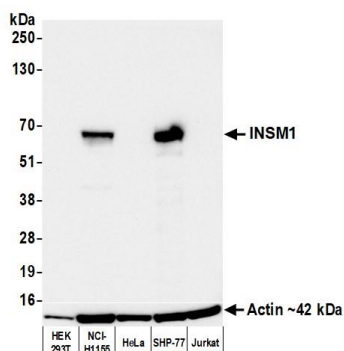
**IHC HUMAN CONTROLS** Neuroendocrine Tumor, Pancreas, SHP-77 Cells

**IHC MOUSE CONTROLS** Beta-TC-6 Cells

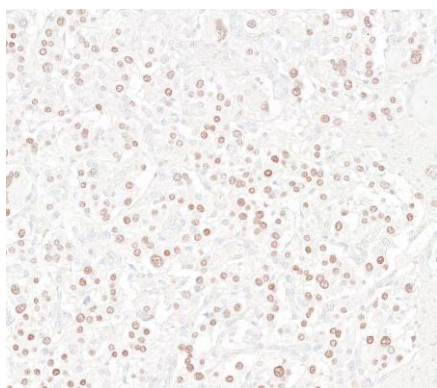
**ADDITIONAL INFO** <https://www.fortislife.com/p/A700-272-T>

Use the link above to view SDS, a current list of citations, and other product specific information.

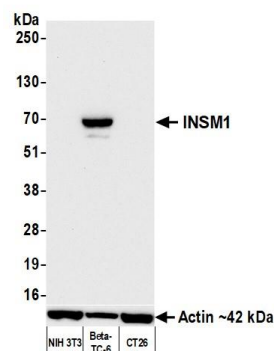
This document certifies that this product has met all of the quality control standards defined by Bethyl Laboratories, Inc.  
Michael Spencer, PhD Date: May 31, 2023



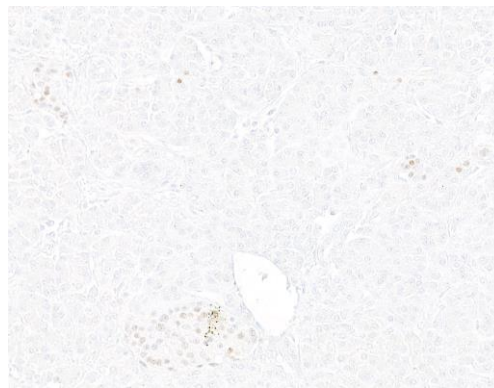
**Detection of human INSM1 by western blot.** *Samples:* Whole cell lysate (25 µg) from HEK293T, NCI-H1155, HeLa, SHP-77, and Jurkat cells prepared using NETN lysis buffer. *Antibody:* Rabbit anti-INSM1 recombinant monoclonal antibody [BLR272L] (A700-272 lot 1) used at 1:1000. *Secondary:* HRP-conjugated goat anti-rabbit IgG (A120-101P). *Detection:* Chemiluminescence with an exposure time of 10 seconds. Lower Panel: Rabbit anti-Actin recombinant monoclonal antibody [BLR057F] (A700-057).



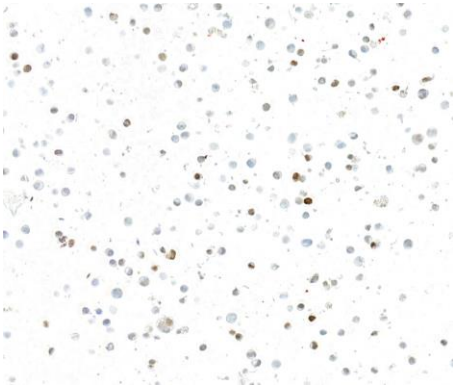
**Detection of human INSM1 by immunohistochemistry.** *Sample:* FFPE section of neuroendocrine tumor. *Antibody:* Rabbit anti-INSM1 recombinant monoclonal antibody [BLR272L] (A700-272). *Secondary:* HRP-conjugated goat anti-rabbit IgG (A120-501P).



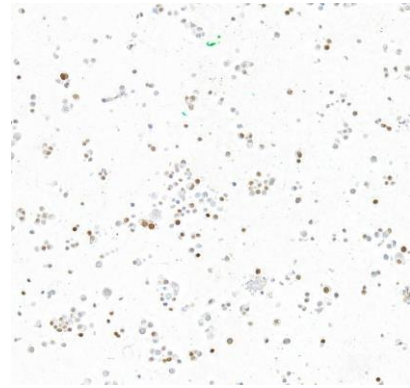
**Detection of mouse INSM1 by western blot.** *Samples:* Whole cell lysate (25 µg) from NIH 3T3, Beta-TC-6, and CT26 cells prepared using NETN lysis buffer. *Antibody:* Rabbit anti-INSM1 recombinant monoclonal antibody [BLR272L] (A700-272 lot 1) used at 1:1000. *Secondary:* HRP-conjugated goat anti-rabbit IgG (A120-101P). *Detection:* Chemiluminescence with an exposure time of 30 seconds. Lower Panel: Rabbit anti-Actin recombinant monoclonal antibody [BLR057F] (A700-057).



**Detection of human INSM1 by immunohistochemistry.** *Sample:* FFPE section of human pancreas. *Antibody:* Rabbit anti-INSM1 recombinant monoclonal antibody [BLR272L] (A700-272). *Secondary:* HRP-conjugated goat anti-rabbit IgG (A120-501P).

**Detection of human INSM1 by immunocytochemistry.**

*Sample:* FFPE section of SHP-77 cells. *Antibody:* Rabbit anti-INSM1 recombinant monoclonal antibody [BLR272L] (A700-272). *Secondary:* HRP-conjugated goat anti-rabbit IgG (A120-501P).

**Detection of mouse INSM1 by immunocytochemistry.**

*Sample:* FFPE section of Beta-TC-6 cells. *Antibody:* Rabbit anti-INSM1 recombinant monoclonal antibody [BLR272L] (A700-272). *Secondary:* HRP-conjugated goat anti-rabbit IgG (A120-501P).