



SZABO SCANDIC

Part of Europa Biosite

Produktinformation



Forschungsprodukte & Biochemikalien



Zellkultur & Verbrauchsmaterial



Diagnostik & molekulare Diagnostik



Laborgeräte & Service

Weitere Information auf den folgenden Seiten!
See the following pages for more information!



Lieferung & Zahlungsart

siehe unsere [Liefer- und Versandbedingungen](#)

Zuschläge

- Mindermengenzuschlag
- Trockeneiszuschlag
- Gefahrgutzuschlag
- Expressversand

SZABO-SCANDIC HandelsgmbH

Quellenstraße 110, A-1100 Wien

T. +43(0)1 489 3961-0

F. +43(0)1 489 3961-7

mail@szabo-scandic.com

www.szabo-scandic.com

[linkedin.com/company/szaboscandic](https://www.linkedin.com/company/szaboscandic) 

CD48 Recombinant Monoclonal Antibody [BLR275L]

Rabbit Recombinant Monoclonal

Purified		RefSeq ID	NP_031675.1
Catalog No.	A700-275-T	Uniprot ID	P18181
Lot No.	1	GenID	12506

APPLICATIONS	WB, IHC, ICC
SPECIES REACTIVITY	Mouse
AMOUNT	10 µl (5+ tests)
CONCENTRATION	250 µg/ml
STORAGE/SHELF LIFE	2 – 8°C / 1 year from date of receipt
PHYSICAL STATE	Liquid
BUFFER	Borate Buffered Saline (BBS) pH 8.2 with 0.1% BSA and 0.09% Sodium Azide
ISOTYPE	IgG
CLONE #	BLR275L
ORIGIN	USA

PRODUCTION PROCEDURES Recombinant antibody was purified from cell culture supernatant.
Immunogen was a recombinant protein representing the extracellular domain of mouse CD48 (residues 23–216, NP_031675.1).

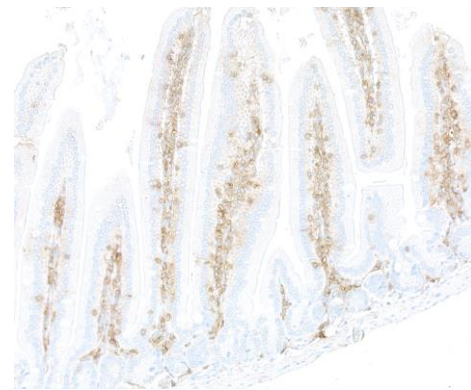
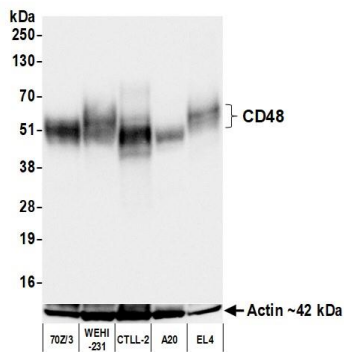
APPLICATIONS Centrifuge tube to remove product from lid. Optimal working dilutions should be determined experimentally by the investigator. Prepare working dilution immediately before use.

Western Blot	1:1,000
Immunohistochemistry	1:100 to 1:500. Epitope retrieval with citrate buffer pH 6.0 is recommended for FFPE tissue sections.
Immunocytochemistry	1:100 to 1:500. Epitope retrieval with citrate buffer pH 6.0 is recommended for FFPE cell sections.

IHC MOUSE CONTROLS Bone Marrow, Gut, Spleen, Ba/F3 Cells, WEHI-231 Cells

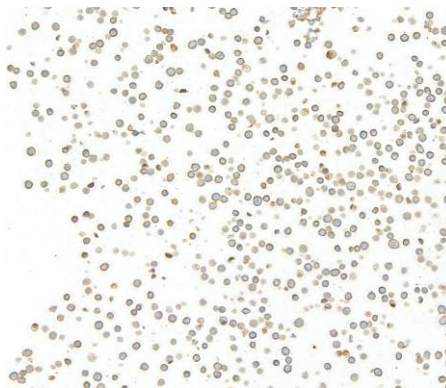
ADDITIONAL INFO <https://www.fortislife.com/p/A700-275-T>
Use the link above to view SDS, a current list of citations, and other product specific information.

This document certifies that this product has met all of the quality control standards defined by Bethyl Laboratories, Inc.
Michael Spencer, PhD Date: June 30, 2023



Detection of mouse CD48 by western blot. *Samples:* Whole cell lysate (25 μ g) from 70Z/3, WEHI-231, CTLL-2, A20, and EL4 cells prepared using NETN lysis buffer. *Antibody:* Rabbit anti-CD48 recombinant monoclonal antibody [BLR275L] (A700-275 lot 1) used at 1:1000. *Secondary:* HRP-conjugated goat anti-rabbit IgG (A120-101P). *Detection:* Chemiluminescence with an exposure time of 3 seconds. Lower Panel: Rabbit anti-Actin recombinant monoclonal antibody [BLR057F] (A700-057).

Detection of mouse CD48 by immunohistochemistry. *Sample:* FFPE section of mouse gut. *Antibody:* Rabbit anti-CD48 recombinant monoclonal antibody [BLR275L] (A700-275). *Secondary:* HRP-conjugated goat anti-rabbit IgG (A120-501P).



Detection of mouse CD48 by immunocytochemistry. *Sample:* FFPE section of WEHI-231 cells. *Antibody:* Rabbit anti-CD48 recombinant monoclonal antibody [BLR275L] (A700-275). *Secondary:* HRP-conjugated goat anti-rabbit IgG (A120-501P).