



# SZABO SCANDIC

Part of Europa Biosite

## Produktinformation



Forschungsprodukte & Biochemikalien



Zellkultur & Verbrauchsmaterial



Diagnostik & molekulare Diagnostik



Laborgeräte & Service

Weitere Information auf den folgenden Seiten!  
See the following pages for more information!



### Lieferung & Zahlungsart

siehe unsere [Liefer- und Versandbedingungen](#)

### Zuschläge

- Mindermengenzuschlag
- Trockeneiszuschlag
- Gefahrgutzuschlag
- Expressversand

### SZABO-SCANDIC HandelsgmbH

Quellenstraße 110, A-1100 Wien

T. +43(0)1 489 3961-0

F. +43(0)1 489 3961-7

[mail@szabo-scandic.com](mailto:mail@szabo-scandic.com)

[www.szabo-scandic.com](http://www.szabo-scandic.com)

[linkedin.com/company/szaboscandic](https://www.linkedin.com/company/szaboscandic) 

# ARID1A/BAF250 Recombinant Monoclonal Antibody [BLR279L]

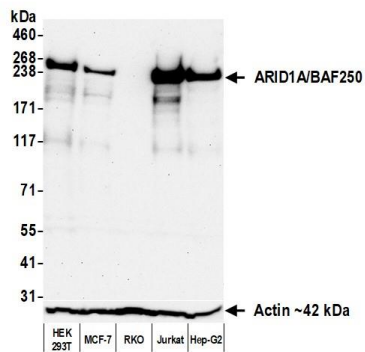
Rabbit Recombinant Monoclonal

Purified		RefSeq ID	NP_006006.3
Catalog No.	A700-279-T	Uniprot ID	O14497
Lot No.	1	GeneID	8289

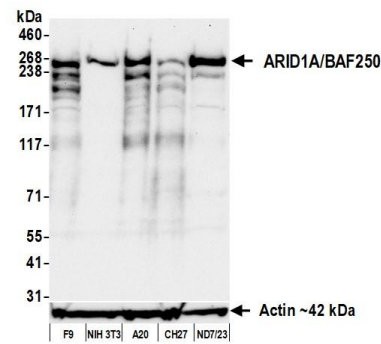
---

<b>APPLICATIONS</b>	WB, IP, IHC, ICC, Flow Cyt
<b>SPECIES REACTIVITY</b>	Human, Mouse
<b>AMOUNT</b>	10 µl (5+ tests)
<b>CONCENTRATION</b>	50 µg/ml
<b>STORAGE/SHELF LIFE</b>	2 - 8°C / 1 year from date of receipt
<b>PHYSICAL STATE</b>	Liquid
<b>BUFFER</b>	Borate Buffered Saline (BBS) pH 8.2 with 0.1% BSA and 0.09% Sodium Azide
<b>ISOTYPE</b>	IgG
<b>CLONE #</b>	BLR279L
<b>ORIGIN</b>	USA
<b>PRODUCTION PROCEDURES</b>	Recombinant antibody was purified from cell culture supernatant.  Immunogen was a peptide representing a region between residue 750 and 800 of human AT-rich interactive domain-containing protein 1A using the numbering given in entry NP_006006.3 (Gene ID 8289).
<b>APPLICATIONS</b>	Centrifuge tube to remove product from lid. Optimal working dilutions should be determined experimentally by the investigator. Prepare working dilution immediately before use.  Western Blot                      1:1,000 Immunoprecipitation            20 µl/1 mg lysate Immunohistochemistry        1:100 to 1:500. Epitope retrieval with citrate buffer pH 6.0 is recommended for FFPE tissue sections. Immunocytochemistry        1:100 to 1:500. Epitope retrieval with citrate buffer pH 6.0 is recommended for FFPE cell sections. Flow Cytometry                Fixed in 4% formaldehyde and permeabilized with 90% methanol. 1 µl per 1 x 10 <sup>6</sup> cells.
<b>IHC HUMAN CONTROLS</b>	Breast Carcinoma, Colon Carcinoma, Lung Carcinoma, Ovarian Carcinoma, Prostate Carcinoma, Tonsil, DLD-1 Cells, HL-60 Cells, OVCAR-8 Cells
<b>IHC MOUSE CONTROLS</b>	Plasmacytoma, Spleen, CT26 cells, mIMCD-3 Cells
<b>ADDITIONAL INFO</b>	<a href="https://www.fortislifesciences.com/p/A700-279-T">https://www.fortislifesciences.com/p/A700-279-T</a> Use the link above to view SDS, a current list of citations, and other product specific information.

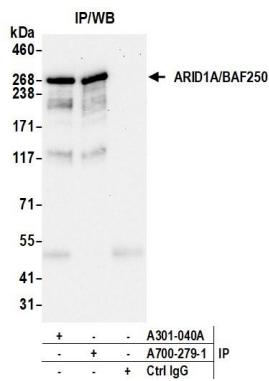
This document certifies that this product has met all of the quality control standards defined by Bethyl Laboratories, Inc.  
Michael Spencer, PhD Date: September 28, 2023

**Detection of human ARID1A/BAF250 by western blot.**

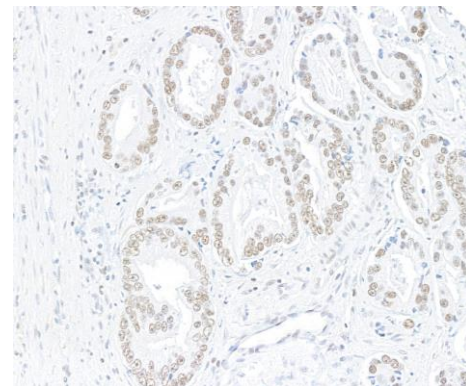
*Samples:* Whole cell lysate (50 µg) from HEK293T, MCF-7, RKO, Jurkat, and Hep-G2 cells prepared using NETN lysis buffer. *Antibody:* Rabbit anti-ARID1A/BAF250 recombinant monoclonal antibody [BLR279L] (A700-279 lot 1) used at 1:1000. *Secondary:* HRP-conjugated goat anti-rabbit IgG (A120-101P). *Detection:* Chemiluminescence with an exposure time of 75 seconds. Lower Panel: Rabbit anti-Actin recombinant monoclonal antibody [BLR057F] (A700-057).

**Detection of mouse ARID1A/BAF250 by western blot.**

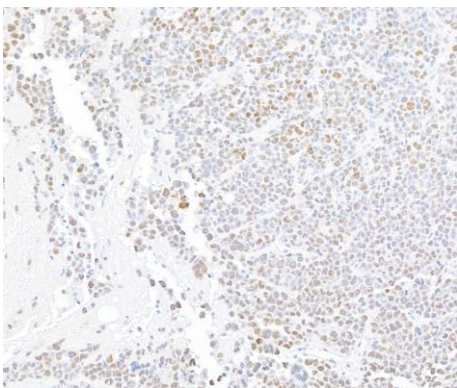
*Samples:* Whole cell lysate (50 µg) from F9, NIH 3T3, A20, CH27, and ND7/23 cells prepared using NETN lysis buffer. *Antibody:* Rabbit anti-ARID1A/BAF250 recombinant monoclonal antibody [BLR279L] (A700-279 lot 1) used at 1:1000. *Secondary:* HRP-conjugated goat anti-rabbit IgG (A120-101P). *Detection:* Chemiluminescence with an exposure time of 30 seconds. Lower Panel: Rabbit anti-Actin recombinant monoclonal antibody [BLR057F] (A700-057).



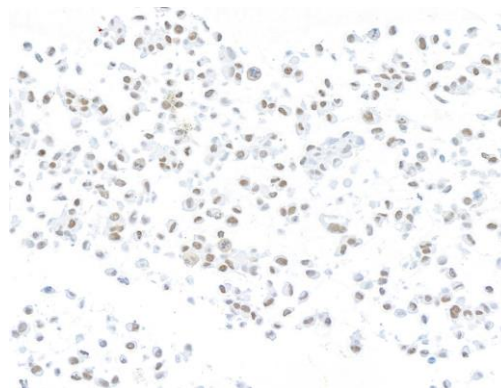
**Detection of human ARID1A/BAF250 by western blot of immunoprecipitates.** *Samples:* Whole cell lysate (1 mg per IP; 10% of IP loaded) from 293T cells prepared using NETN lysis buffer. *Antibodies:* Rabbit anti-ARID1A/BAF250 recombinant monoclonal antibody [BLR279L] (A700-279 lot 1) used for IP at 20 µl/mg lysate. ARID1A/BAF250 was also immunoprecipitated by a second antibody against a different epitope of ARID1A/BAF250 (A301-040A). For blotting immunoprecipitated ARID1A/BAF250, A700-279 was used at 1:1000. *Detection:* Chemiluminescence with an exposure time of 75 seconds.



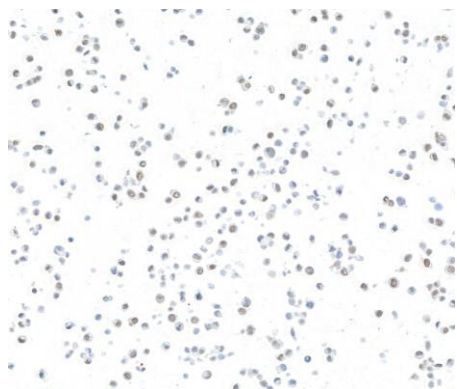
**Detection of human ARID1A/BAF250 by immunohistochemistry.** *Sample:* FFPE section of prostate carcinoma. *Antibody:* Rabbit anti-ARID1A/BAF250 recombinant monoclonal antibody [BLR279L] (A700-279). *Secondary:* HRP-conjugated goat anti-rabbit IgG (A120-501P).



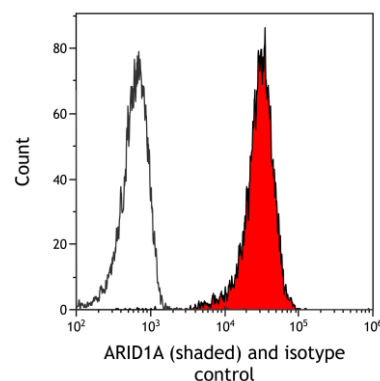
**Detection of mouse ARID1A/BAF250 by immunohistochemistry.** *Sample:* FFPE section of mouse plasmacytoma. *Antibody:* Rabbit anti-ARID1A recombinant monoclonal antibody [BLR279L] (A700-279). *Secondary:* HRP-conjugated goat anti-rabbit IgG (A120-501P).



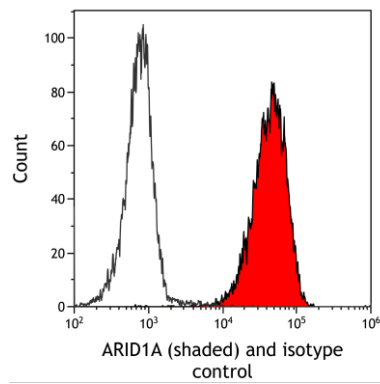
**Detection of human ARID1A/BAF250 by immunocytochemistry.** *Sample:* FFPE section of OVCAR-8 cells. *Antibody:* Rabbit anti-ARID1A recombinant monoclonal antibody [BLR279L] (A700-279). *Secondary:* HRP-conjugated goat anti-rabbit IgG (A120-501P).



**Detection of mouse ARID1A/BAF250 by immunocytochemistry.** *Sample:* FFPE section of mouse m1MCD-3 cells. *Antibody:* Rabbit anti-ARID1A recombinant monoclonal antibody [BLR279L] (A700-279). *Secondary:* HRP-conjugated goat anti-rabbit IgG (A120-501P).



**Detection of human ARID1A/BAF250 (shaded) in HT-29 cells by flow cytometry.** *Antibody:* Rabbit anti-ARID1A recombinant monoclonal antibody [BLR279L] (A700-279) or isotype control (unshaded). *Secondary:* DyLight® 650-conjugated goat anti-rabbit IgG (A120-101D5).



**Detection of mouse ARID1A/BAF250 (shaded) in EL4 cells by flow cytometry.** *Antibody:* Rabbit anti- ARID1A recombinant monoclonal antibody [BLR279L] (A700-279) or isotype control (unshaded). *Secondary:* DyLight® 650-conjugated goat anti-rabbit IgG (A120-101D5).