



# SZABO SCANDIC

Part of Europa Biosite

## Produktinformation



Forschungsprodukte & Biochemikalien



Zellkultur & Verbrauchsmaterial



Diagnostik & molekulare Diagnostik



Laborgeräte & Service

Weitere Information auf den folgenden Seiten!  
See the following pages for more information!



### Lieferung & Zahlungsart

siehe unsere [Liefer- und Versandbedingungen](#)

### Zuschläge

- Mindermengenzuschlag
- Trockeneiszuschlag
- Gefahrgutzuschlag
- Expressversand

### SZABO-SCANDIC HandelsgmbH

Quellenstraße 110, A-1100 Wien

T. +43(0)1 489 3961-0

F. +43(0)1 489 3961-7

[mail@szabo-scandic.com](mailto:mail@szabo-scandic.com)

[www.szabo-scandic.com](http://www.szabo-scandic.com)

[linkedin.com/company/szaboscandic](https://www.linkedin.com/company/szaboscandic)

# Met Recombinant Monoclonal Antibody [BLR283L]

Rabbit Recombinant Monoclonal

Purified		RefSeq ID	NP_000236.2
Catalog No.	A700-283	Uniprot ID	P08581
Lot No.	1	GeneID	4233

---

<b>APPLICATIONS</b>	WB, IP, IHC, ICC, Flow Cyt
<b>SPECIES REACTIVITY</b>	Human
<b>AMOUNT</b>	100 µl (50+ tests)
<b>CONCENTRATION</b>	1000 µg/ml
<b>STORAGE/SHELF LIFE</b>	2 – 8°C / 1 year from date of receipt
<b>PHYSICAL STATE</b>	Liquid
<b>BUFFER</b>	Borate Buffered Saline (BBS) pH 8.2 with 0.09% Sodium Azide, BSA-Free
<b>ISOTYPE</b>	IgG
<b>CLONE #</b>	BLR283L
<b>ORIGIN</b>	USA
<b>PRODUCTION PROCEDURES</b>	Recombinant antibody was purified from cell culture supernatant.

Immunogen was a peptide representing a region between residue 1340 and the C-terminus (residue 1390) of human Hepatocyte growth factor receptor (aka Met) using the numbering given in entry NP\_000236.2 (Gene ID 4233).

**APPLICATIONS** Centrifuge tube to remove product from lid. Optimal working dilutions should be determined experimentally by the investigator. Prepare working dilution immediately before use.

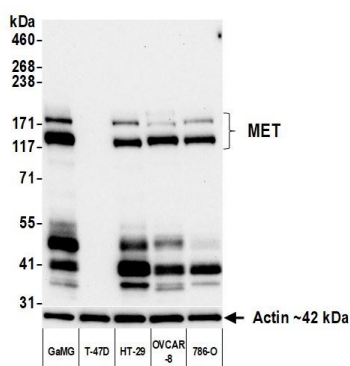
Western Blot	1:1,000
Immunoprecipitation	6 µl/1 mg lysate
Immunohistochemistry	1:100 to 1:500. Epitope retrieval with citrate buffer pH 6.0 is recommended for FFPE tissue sections.
Immunocytochemistry	1:100 to 1:500. Epitope retrieval with citrate buffer pH 6.0 is recommended for FFPE cell sections.
Flow Cytometry	Fixed in 4% formaldehyde and permeabilized with 90% methanol. 0.5 µl per 1 x 10 <sup>6</sup> cells.

**IHC HUMAN CONTROLS** Colon Carcinoma, Ovarian Carcinoma, Small Cell Lung Cancer, Cal-27 Cells, GaMG Cells, HT-29 Cells, NCI-H226 Cells

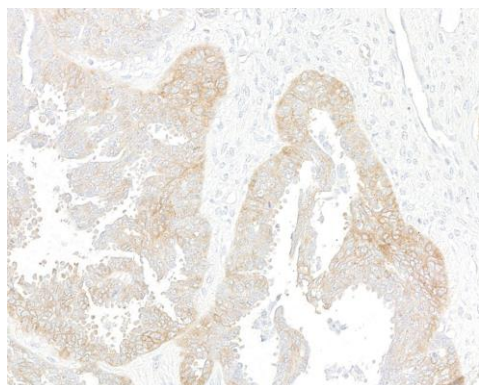
**ADDITIONAL INFO** <https://www.fortislife.com/p/A700-283>

Use the link above to view SDS, a current list of citations, and other product specific information.

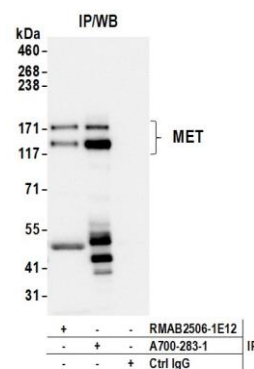
This document certifies that this product has met all of the quality control standards defined by Bethyl Laboratories, Inc.  
Michael Spencer, PhD Date: September 27, 2023



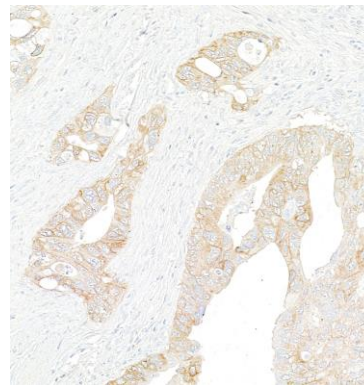
**Detection of human MET by western blot.** *Samples:* Whole cell lysate (10 µg) from GaMG, T-47D, HT-29, OVCAR-8, and 786-O cells prepared using NETN lysis buffer. *Antibody:* Rabbit anti-MET recombinant monoclonal antibody [BLR283L] (A700-283 lot 1) used at 1:1000. *Secondary:* HRP-conjugated goat anti-rabbit IgG (A120-101P). *Detection:* Chemiluminescence with an exposure time of 30 seconds. Lower Panel: Rabbit anti-Actin recombinant monoclonal antibody [BLR057F] (A700-057).



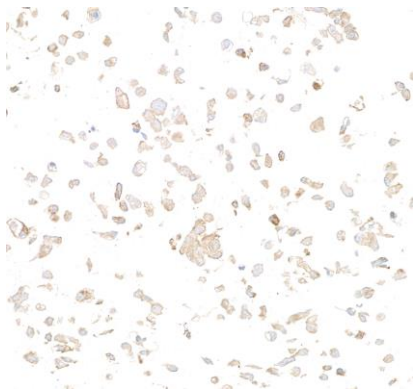
**Detection of human MET by immunohistochemistry.** *Sample:* FFPE section of ovarian carcinoma. *Antibody:* Rabbit anti-MET recombinant monoclonal antibody [BLR283L] (A700-283). *Secondary:* HRP-conjugated goat anti-rabbit IgG (A120-501P).



**Detection of human MET by western blot of immunoprecipitates.** *Samples:* Whole cell lysate (1 mg per IP; 10% of IP loaded) from GaMG cells prepared using NETN lysis buffer. *Antibodies:* Rabbit anti-MET recombinant monoclonal antibody [BLR283L] (A700-283 lot 1) used for IP at 6 µl/mg lysate. MET was also immunoprecipitated by a second antibody against a different epitope of MET (RMAB2506-1E12). For blotting immunoprecipitated MET, A700-283 was used at 1:1000. *Detection:* Chemiluminescence with an exposure time of 10 seconds.



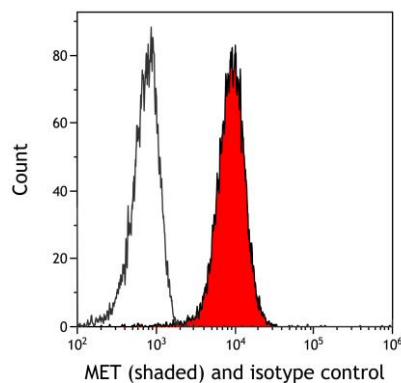
**Detection of human MET by immunohistochemistry.** *Sample:* FFPE section of colon carcinoma. *Antibody:* Rabbit anti-MET recombinant monoclonal antibody [BLR283L] (A700-283). *Secondary:* HRP-conjugated goat anti-rabbit IgG (A120-501P).



**Detection of human MET by immunocytochemistry.**  
*Sample:* FFPE section of GaMG cells. *Antibody:* Rabbit anti-MET recombinant monoclonal antibody [BLR283L] (A700-283). *Secondary:* HRP-conjugated goat anti-rabbit IgG (A120-501P).



**Detection of human MET by immunocytochemistry.**  
*Sample:* FFPE section of NCI-H226 cells. *Antibody:* Rabbit anti-MET recombinant monoclonal antibody [BLR283L] (A700-283). *Secondary:* HRP-conjugated goat anti-rabbit IgG (A120-501P).



**Detection of human MET (shaded) in HT-29 cells by flow cytometry.** *Antibody:* Rabbit anti-MET recombinant monoclonal antibody [BLR283L] (A700-283) or isotype control (unshaded). *Secondary:* DyLight® 650-conjugated goat anti-rabbit IgG (A120-101D5).