



SZABO SCANDIC

Part of Europa Biosite

Produktinformation



Forschungsprodukte & Biochemikalien



Zellkultur & Verbrauchsmaterial



Diagnostik & molekulare Diagnostik



Laborgeräte & Service

Weitere Information auf den folgenden Seiten!
See the following pages for more information!



Lieferung & Zahlungsart

siehe unsere [Liefer- und Versandbedingungen](#)

Zuschläge

- Mindermengenzuschlag
- Trockeneiszuschlag
- Gefahrgutzuschlag
- Expressversand

SZABO-SCANDIC HandelsgmbH

Quellenstraße 110, A-1100 Wien

T. +43(0)1 489 3961-0

F. +43(0)1 489 3961-7

mail@szabo-scandic.com

www.szabo-scandic.com

[linkedin.com/company/szaboscandic](https://www.linkedin.com/company/szaboscandic) 

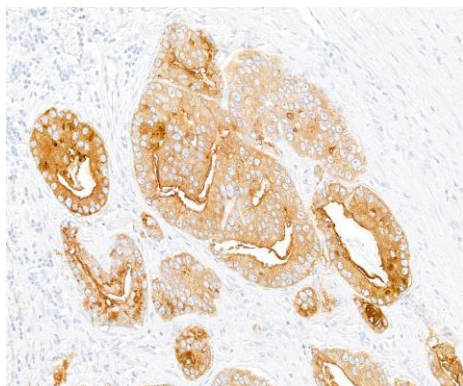
DPP4/CD26 Recombinant Monoclonal Antibody [BLR288L]

Rabbit Recombinant Monoclonal

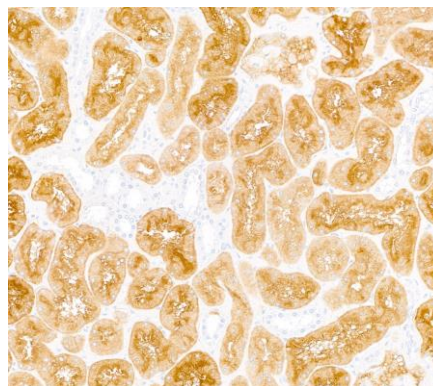
Purified		RefSeq ID	NP_001926.2
Catalog No.	A700-288-T	Uniprot ID	P27487
Lot No.	1	GeneID	1803

APPLICATIONS	IHC, ICC, Flow Cyt
SPECIES REACTIVITY	Human
AMOUNT	10 µl (5+ tests)
CONCENTRATION	500 µg/ml
STORAGE/SHELF LIFE	2 - 8°C / 1 year from date of receipt
PHYSICAL STATE	Liquid
BUFFER	Borate Buffered Saline (BBS) pH 8.2 with 0.1% BSA and 0.09% Sodium Azide
ISOTYPE	IgG
CLONE #	BLR288L
ORIGIN	USA
PRODUCTION PROCEDURES	Recombinant antibody was purified from cell culture supernatant. Immunogen was a recombinant protein representing the extracellular domain of human Dipeptidyl peptidase 4 (aka CD26, residues 29-766, NP_001926.2).
APPLICATIONS	Centrifuge tube to remove product from lid. Optimal working dilutions should be determined experimentally by the investigator. Prepare working dilution immediately before use. Immunohistochemistry 1:100 to 1:500. Epitope retrieval with citrate buffer pH 6.0 is recommended for FFPE tissue sections. Immunocytochemistry 1:100 to 1:500. Epitope retrieval with citrate buffer pH 6.0 is recommended for FFPE cell sections. Flow Cytometry Live or cells fixed in 4% formaldehyde and permeabilized with 90% methanol. 1 µl per 1 × 10 ⁶ cells.
IHC HUMAN CONTROLS	Kidney, Prostate Carcinoma, 786-O Cells, My-La CD4+ Cells, NCI-H226 Cells
ADDITIONAL INFO	https://www.fortislifecom.com/p/A700-288-T Use the link above to view SDS, a current list of citations, and other product specific information.

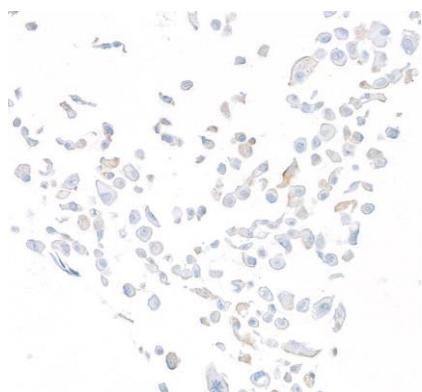
This document certifies that this product has met all of the quality control standards defined by Bethyl Laboratories, Inc.
Michael Spencer, PhD Date: September 28, 2023



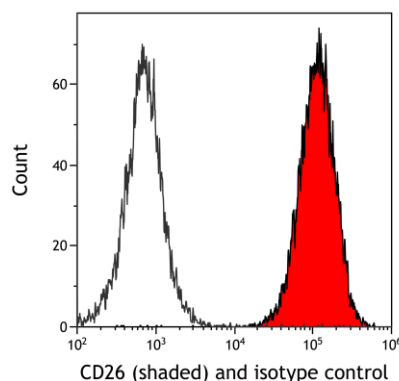
Detection of human DPP4/CD26 by immunohistochemistry. *Sample:* FFPE section of prostate carcinoma. *Antibody:* Rabbit anti-DPP4/CD26 recombinant monoclonal antibody [BLR288L] (A700-288). *Secondary:* HRP-conjugated goat anti-rabbit IgG (A120-501P).



Detection of human DPP4/CD26 by immunohistochemistry. *Sample:* FFPE section of kidney. *Antibody:* Rabbit anti-DPP4/CD26 recombinant monoclonal antibody [BLR288L] (A700-288). *Secondary:* HRP-conjugated goat anti-rabbit IgG (A120-501P).



Detection of human DPP4/CD26 by immunocytochemistry. *Sample:* FFPE section of NCI-H226 cells. *Antibody:* Rabbit anti-DPP4/CD26 recombinant monoclonal antibody [BLR288L] (A700-288). *Secondary:* HRP-conjugated goat anti-rabbit IgG (A120-501P).



Detection of human CD26 (shaded) in 786-O cells by flow cytometry. *Antibody:* Rabbit anti-CD26 recombinant monoclonal antibody [BLR288L] (A700-288) or isotype control (unshaded). *Secondary:* DyLight® 650-conjugated goat anti-rabbit IgG (A120-101D5).