



SZABO SCANDIC

Part of Europa Biosite

Produktinformation



Forschungsprodukte & Biochemikalien



Zellkultur & Verbrauchsmaterial



Diagnostik & molekulare Diagnostik



Laborgeräte & Service

Weitere Information auf den folgenden Seiten!
See the following pages for more information!



Lieferung & Zahlungsart

siehe unsere [Liefer- und Versandbedingungen](#)

Zuschläge

- Mindermengenzuschlag
- Trockeneiszuschlag
- Gefahrgutzuschlag
- Expressversand

SZABO-SCANDIC HandelsgmbH

Quellenstraße 110, A-1100 Wien

T. +43(0)1 489 3961-0

F. +43(0)1 489 3961-7

mail@szabo-scandic.com

www.szabo-scandic.com

[linkedin.com/company/szaboscandic](https://www.linkedin.com/company/szaboscandic) 

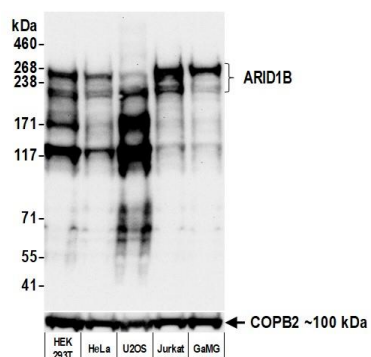
ARID1B Recombinant Monoclonal Antibody [BLR291L]

Rabbit Recombinant Monoclonal

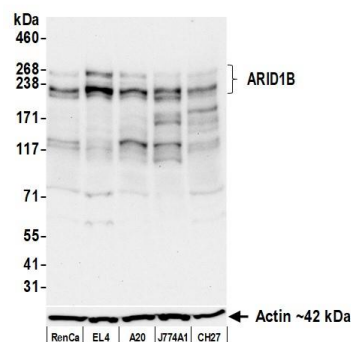
Purified		RefSeq ID	NP_059989.3
Catalog No.	A700-291-T	Uniprot ID	Q8NFD5
Lot No.	1	GeneID	57492

APPLICATIONS	WB, IP, IHC, ICC
SPECIES REACTIVITY	Human, Mouse
AMOUNT	10 µl (5+ tests)
CONCENTRATION	1000 µg/ml
STORAGE/SHELF LIFE	2 - 8°C / 1 year from date of receipt
PHYSICAL STATE	Liquid
BUFFER	Borate Buffered Saline (BBS) pH 8.2 with 0.09% Sodium Azide, BSA-Free
ISOTYPE	IgG
CLONE #	BLR291L
ORIGIN	USA
PRODUCTION PROCEDURES	Recombinant antibody was purified from cell culture supernatant. Immunogen was a peptide representing a region between residue 1400 and 1450 of human AT-rich interactive domain-containing protein 1B using the numbering given in entry NP_059989.3 (Gene ID 57492).
APPLICATIONS	Centrifuge tube to remove product from lid. Optimal working dilutions should be determined experimentally by the investigator. Prepare working dilution immediately before use. Western Blot 1:1,000 Immunoprecipitation 6 µl/1 mg lysate Immunohistochemistry 1:100 to 1:500. Epitope retrieval with citrate buffer pH 6.0 is recommended for FFPE tissue sections. Immunocytochemistry 1:100 to 1:500. Epitope retrieval with citrate buffer pH 6.0 is recommended for FFPE cell sections.
IHC HUMAN CONTROLS	Breast Carcinoma, Colon Carcinoma, Lung Carcinoma, Ovarian Carcinoma, A549 Cells, Jurkat Cells, RKO Cells
IHC MOUSE CONTROLS	Gut, Testis, Uterus, ND7/23 Cells, RenCa Cells
ADDITIONAL INFO	https://www.fortislife.com/p/A700-291-T Use the link above to view SDS, a current list of citations, and other product specific information.

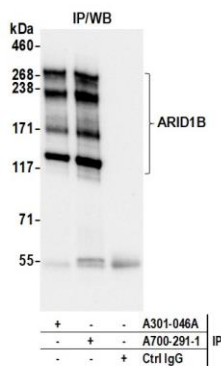
This document certifies that this product has met all of the quality control standards defined by Bethyl Laboratories, Inc.
Michael Spencer, PhD Date: September 28, 2023



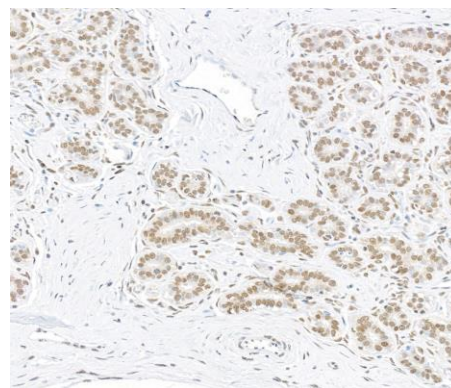
Detection of human ARID1B by western blot. *Samples:* Whole cell lysate (50 µg) from HEK293T, HeLa, U2OS, Jurkat, and GaMG cells prepared using NETN lysis buffer. *Antibody:* Rabbit anti-ARID1B recombinant monoclonal antibody [BLR291L] (A700-291 lot 1) used at 1:1000. *Secondary:* HRP-conjugated goat anti-rabbit IgG (A120-101P). *Detection:* Chemiluminescence with an exposure time of 30 seconds. Lower Panel: Rabbit anti-COPB2 antibody (A304-523A).



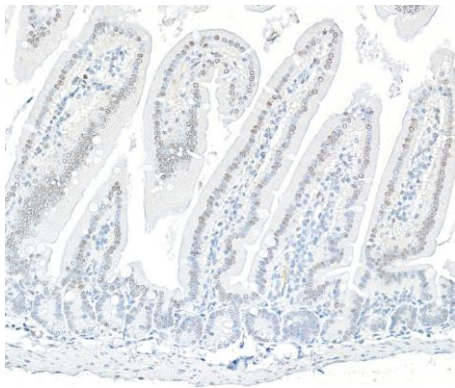
Detection of mouse ARID1B by western blot. *Samples:* Whole cell lysate (25 µg) from RenCa, EL4, A20, J774A1, and CH27 cells prepared using NETN lysis buffer. *Antibody:* Rabbit anti-ARID1B recombinant monoclonal antibody [BLR291L] (A700-291 lot 1) used at 1:1000. *Secondary:* HRP-conjugated goat anti-rabbit IgG (A120-101P). *Detection:* Chemiluminescence with an exposure time of 30 seconds. Lower Panel: Rabbit anti-Actin recombinant monoclonal antibody [BLR057F] (A700-057).



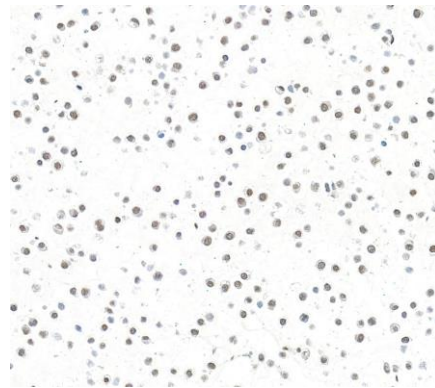
Detection of human ARID1B by western blot of immunoprecipitates. *Samples:* Whole cell lysate (1.0 mg per IP reaction; 20% of IP loaded) from 293T cells prepared using NETN lysis buffer. *Antibodies:* Rabbit anti-ARID1B recombinant monoclonal antibody [BLR291L] (A700-291 lot 1) used for IP at 6 µl/mg lysate. ARID1B was also immunoprecipitated by a second antibody against a different antigen of ARID1B (A301-046A). For blotting immunoprecipitated ARID1B, A700-291 was used at 1:1000. *Detection:* Chemiluminescence with an exposure time of 10 seconds.



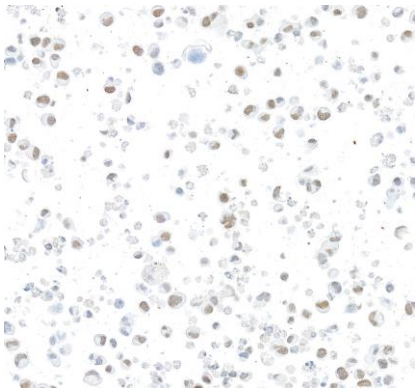
Detection of human ARID1B by immunohistochemistry. *Sample:* FFPE section of breast carcinoma. *Antibody:* Rabbit anti-ARID1B recombinant monoclonal antibody [BLR291L] (A700-291). *Secondary:* HRP-conjugated goat anti-rabbit IgG (A120-501P).



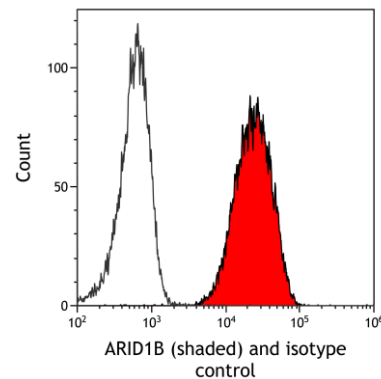
Detection of mouse ARID1B/BAF250 by immunohistochemistry. *Sample:* FFPE section of mouse gut. *Antibody:* Rabbit anti-ARID1B recombinant monoclonal antibody [BLR291L] (A700-291). *Secondary:* HRP-conjugated goat anti-rabbit IgG (A120-501P).



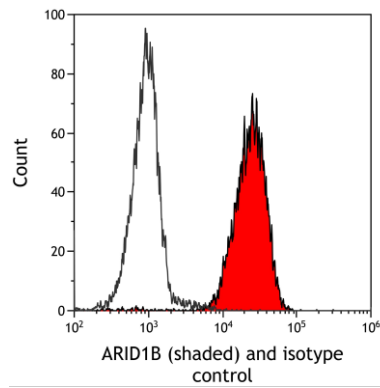
Detection of human ARID1B by immunocytochemistry. *Sample:* FFPE section of RKO cells. *Antibody:* Rabbit anti-ARID1B recombinant monoclonal antibody [BLR291L] (A700-291). *Secondary:* HRP-conjugated goat anti-rabbit IgG (A120-501P).



Detection of mouse ARID1B by immunocytochemistry. *Sample:* FFPE section of ND7/23 cells. *Antibody:* Rabbit anti-ARID1B recombinant monoclonal antibody [BLR291L] (A700-291). *Secondary:* HRP-conjugated goat anti-rabbit IgG (A120-501P).



Detection of human ARID1B (shaded) in Jurkat cells by flow cytometry. *Antibody:* Rabbit anti-ARID1B recombinant monoclonal antibody [BLR291L] (A700-291) or isotype control (unshaded). *Secondary:* DyLight® 650-conjugated goat anti-rabbit IgG (A120-101D5).



Detection of mouse ARID1B (shaded) in EL4 cells by flow cytometry. *Antibody:* Rabbit anti-ARID1B recombinant monoclonal antibody [BLR291L] (A700-291) or isotype control (unshaded). *Secondary:* DyLight® 650-conjugated goat anti-rabbit IgG (A120-101D5).