



# SZABO SCANDIC

Part of Europa Biosite

## Produktinformation



Forschungsprodukte & Biochemikalien



Zellkultur & Verbrauchsmaterial



Diagnostik & molekulare Diagnostik



Laborgeräte & Service

Weitere Information auf den folgenden Seiten!  
See the following pages for more information!



### Lieferung & Zahlungsart

siehe unsere [Liefer- und Versandbedingungen](#)

### Zuschläge

- Mindermengenzuschlag
- Trockeneiszuschlag
- Gefahrgutzuschlag
- Expressversand

### SZABO-SCANDIC HandelsgmbH

Quellenstraße 110, A-1100 Wien

T. +43(0)1 489 3961-0

F. +43(0)1 489 3961-7

[mail@szabo-scandic.com](mailto:mail@szabo-scandic.com)

[www.szabo-scandic.com](http://www.szabo-scandic.com)

[linkedin.com/company/szaboscandic](https://www.linkedin.com/company/szaboscandic) 

# p16INK4a Recombinant Monoclonal Antibody [BC42]

## Mouse Recombinant Monoclonal

Purified		RefSeq ID	NP_000068.1
Catalog No.	A700-292	Uniprot ID	P42771
Lot No.	1	GeneID	1029

---

<b>APPLICATIONS</b>	WB, IHC, ICC, Flow Cyt
<b>SPECIES REACTIVITY</b>	Human
<b>AMOUNT</b>	100 µl (50+ tests)
<b>CONCENTRATION</b>	100 µg/ml
<b>STORAGE/SHELF LIFE</b>	2 - 8°C / 1 year from date of receipt
<b>PHYSICAL STATE</b>	Liquid
<b>BUFFER</b>	Borate Buffered Saline (BBS) pH 8.2 with 0.1% BSA and 0.09% Sodium Azide
<b>ISOTYPE</b>	IgG1
<b>CLONE #</b>	BC42
<b>ORIGIN</b>	USA
<b>PRODUCTION PROCEDURES</b>	Recombinant antibody was manufactured using variable regions (VH and VL) derived from the hybridoma.

Recombinant antibody was purified from cell culture supernatant.

Immunogen was a recombinant protein corresponding to human p16 INK4A.

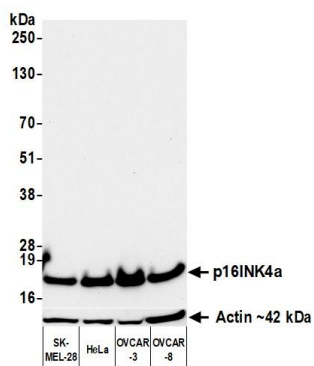
**APPLICATIONS** Centrifuge tube to remove product from lid. Optimal working dilutions should be determined experimentally by the investigator. Prepare working dilution immediately before use.

Western Blot	1:1,000
Immunohistochemistry	1:100 to 1:500. Epitope retrieval with citrate buffer pH 6.0 is recommended for FFPE tissue sections.
Immunocytochemistry	1:100 to 1:500. Epitope retrieval with citrate buffer pH 6.0 is recommended for FFPE cell sections.
Flow Cytometry	Fixed in 4% formaldehyde and permeabilized with 90% methanol. 0.5 µl per $1 \times 10^6$ cells.

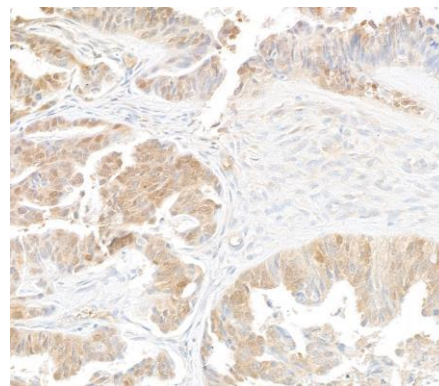
**IHC HUMAN CONTROLS** Breast Carcinoma, Ovarian Carcinoma, A-2058 Cells, HEK293T Cells, HeLa Cells, OVCAR-8 Cells, SUP-T1 Cells

**ADDITIONAL INFO** <https://www.fortislife.com/p/A700-292>  
Use the link above to view SDS, a current list of citations, and other product specific information.

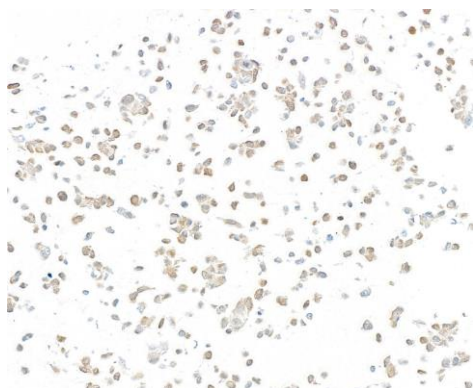
This document certifies that this product has met all of the quality control standards defined by Bethyl Laboratories, Inc.  
Michael Spencer, PhD Date: September 28, 2023



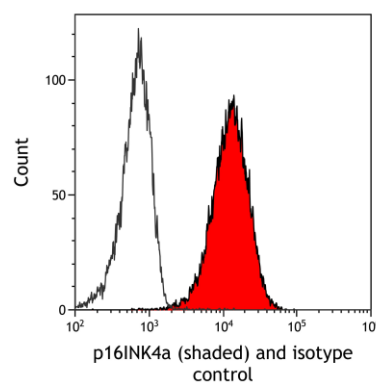
**Detection of human p16INK4a by western blot.** *Samples:* Whole cell lysate (50  $\mu$ g) from SK-MEL-28, HeLa, OVCAR-3, and OVCAR-8 cells prepared using NETN lysis buffer. *Antibody:* Rabbit anti-p16INK4a recombinant monoclonal antibody [BC42] (A700-292 lot 1) used at 1:1000. *Secondary:* HRP-conjugated goat anti-rabbit IgG (A120-101P). *Detection:* Chemiluminescence with an exposure time of 30 seconds. Lower Panel: Rabbit anti-Actin recombinant monoclonal antibody [BLR057F] (A700-057).



**Detection of human p16INK4a by immunohistochemistry.** *Sample:* FFPE section of ovarian carcinoma. *Antibody:* Mouse anti-p16INK4a recombinant monoclonal antibody [BC42] (A700-292). *Secondary:* HRP-conjugated goat anti-mouse IgG (A90-116P).



**Detection of human p16INK4a by immunocytochemistry.** *Sample:* FFPE section of OVCAR-8 cells. *Antibody:* Mouse anti-p16INK4a recombinant monoclonal antibody [BC42] (A700-292). *Secondary:* HRP-conjugated goat anti-mouse IgG (A90-116P).



**Detection of human p16INK4a (shaded) in HeLa cells by flow cytometry.** *Antibody:* Mouse anti-p16INK4a recombinant monoclonal antibody [BC42] (A700-292) or isotype control (unshaded). *Secondary:* DyLight® 650-conjugated goat anti-mouse IgG (A90-116D5).