



# SZABO SCANDIC

Part of Europa Biosite

## Produktinformation



Forschungsprodukte & Biochemikalien



Zellkultur & Verbrauchsmaterial



Diagnostik & molekulare Diagnostik



Laborgeräte & Service

Weitere Information auf den folgenden Seiten!  
See the following pages for more information!



### Lieferung & Zahlungsart

siehe unsere [Liefer- und Versandbedingungen](#)

### Zuschläge

- Mindermengenzuschlag
- Trockeneiszuschlag
- Gefahrgutzuschlag
- Expressversand

### SZABO-SCANDIC HandelsgmbH

Quellenstraße 110, A-1100 Wien

T. +43(0)1 489 3961-0

F. +43(0)1 489 3961-7

[mail@szabo-scandic.com](mailto:mail@szabo-scandic.com)

[www.szabo-scandic.com](http://www.szabo-scandic.com)

[linkedin.com/company/szaboscandic](https://www.linkedin.com/company/szaboscandic) 

# Cytokeratin 14 Recombinant Monoclonal Antibody [LL002]

Mouse Recombinant Monoclonal

Purified		RefSeq ID	NP_000517.3
Catalog No.	A700-293-T	Uniprot ID	P02533
Lot No.	1	GeneID	3861

---

<b>APPLICATIONS</b>	WB, IP, IHC, ICC, Flow Cyt
<b>SPECIES REACTIVITY</b>	Human
<b>AMOUNT</b>	10 µl (5+ tests)
<b>CONCENTRATION</b>	100 µg/ml
<b>STORAGE/SHELF LIFE</b>	2 - 8°C / 1 year from date of receipt
<b>PHYSICAL STATE</b>	Liquid
<b>BUFFER</b>	Borate Buffered Saline (BBS) pH 8.2 with 0.1% BSA and 0.09% Sodium Azide
<b>ISOTYPE</b>	IgG2a
<b>CLONE #</b>	LL002
<b>ORIGIN</b>	USA
<b>PRODUCTION PROCEDURES</b>	Recombinant antibody was manufactured using variable regions (VH and VL) derived from the hybridoma.

Recombinant antibody was purified from cell culture supernatant.

Immunogen was a peptide corresponding to Human Cytokeratin 14 (C terminal).

**APPLICATIONS** Centrifuge tube to remove product from lid. Optimal working dilutions should be determined experimentally by the investigator. Prepare working dilution immediately before use.

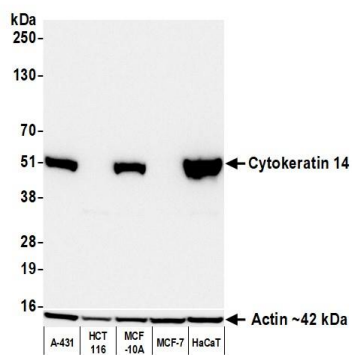
Western Blot	1:1,000
Immunoprecipitation	20 µl/1 mg lysate
Immunohistochemistry	1:100 to 1:500. Epitope retrieval with citrate buffer pH 6.0 is recommended for FFPE tissue sections.
Immunocytochemistry	1:100 to 1:500. Epitope retrieval with citrate buffer pH 6.0 is recommended for FFPE cell sections.
Flow Cytometry	Fixed in 4% formaldehyde and permeabilized with 90% methanol. 1 µl per 1 × 10 <sup>6</sup> cells.

**IHC HUMAN CONTROLS** Bladder Carcinoma, Head and Neck Squamous Cell Carcinoma, Skin Carcinoma, Tonsil, A-431 Cells, Cal-27 Cells, HaCaT Cells, MCF10A Cells, SW954 Cells

**ADDITIONAL INFO** <https://www.fortislifesciences.com/p/A700-293-T>

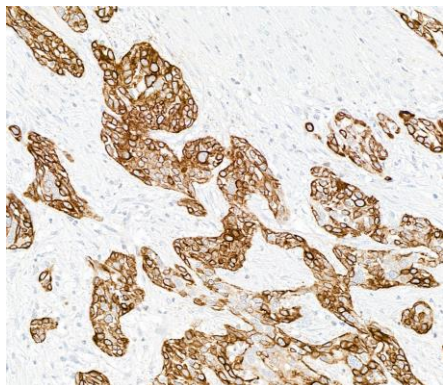
Use the link above to view SDS, a current list of citations, and other product specific information.

This document certifies that this product has met all of the quality control standards defined by Bethyl Laboratories, Inc.  
Michael Spencer, PhD Date: September 28, 2023

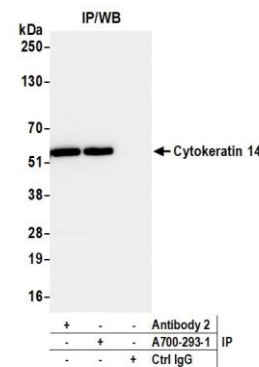


#### Detection of human Cytokeratin 14 by western blot.

**Samples:** Whole cell lysate (25 µg) from A-431, HCT 116, MCF-10A, MCF-7, and HaCaT cells prepared using NETN lysis buffer. **Antibody:** Rabbit anti-Cytokeratin 14 recombinant monoclonal antibody [LL002] (A700-293 lot 1) used at 1:1000. **Secondary:** HRP-conjugated goat anti-rabbit IgG (A120-101P). **Detection:** Chemiluminescence with an exposure time of 3 seconds. Lower Panel: Rabbit anti-Actin recombinant monoclonal antibody [BLR057F] (A700-057).

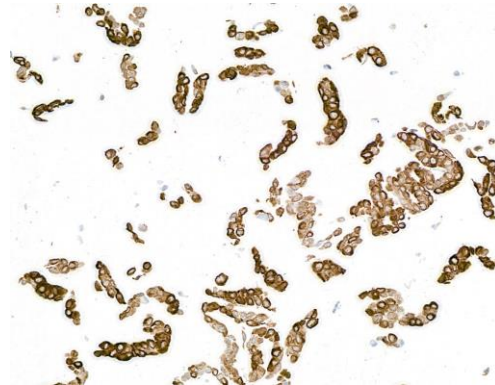


**Detection of human Cytokeratin 14 by immunohistochemistry.** **Sample:** FFPE section of bladder carcinoma. **Antibody:** Mouse anti-Cytokeratin 14 recombinant monoclonal antibody [LL002] (A700-293). **Secondary:** HRP-conjugated goat anti-mouse IgG (A90-116P).

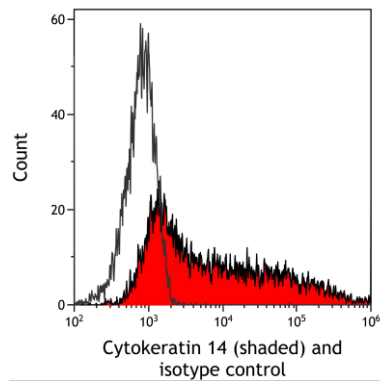


#### Detection of human Cytokeratin 14 by western blot of immunoprecipitates.

**Samples:** Whole cell lysate (1 mg per IP; 10% of IP loaded) from MCF-10A cells prepared using NETN lysis buffer. **Antibodies:** Rabbit anti-Cytokeratin 14 recombinant monoclonal antibody [LL002] (A700-293 lot 1) used for IP at 20 µl/mg lysate. Cytokeratin 14 was also immunoprecipitated by a second antibody against a different epitope of Cytokeratin 14 (Antibody 2). For blotting immunoprecipitated Cytokeratin 14, A700-293 was used at 1:1000. **Detection:** Chemiluminescence with an exposure time of 3 seconds.



**Detection of human Cytokeratin 14 by immunocytochemistry.** **Sample:** FFPE section of CAL-27 cells. **Antibody:** Mouse anti-Cytokeratin 14 recombinant monoclonal antibody [LL002] (A700-293). **Secondary:** HRP-conjugated goat anti-mouse IgG (A90-116P).



**Detection of human Cytokeratin 14 (shaded) in FaDu cells by flow cytometry.** *Antibody:* Mouse anti-Cytokeratin 14 recombinant monoclonal antibody [LL002] (A700-293) or isotype control (unshaded). *Secondary:* DyLight® 650-conjugated goat anti-mouse IgG (A90-116D5).