



SZABO SCANDIC

Part of Europa Biosite

Produktinformation



Forschungsprodukte & Biochemikalien



Zellkultur & Verbrauchsmaterial



Diagnostik & molekulare Diagnostik



Laborgeräte & Service

Weitere Information auf den folgenden Seiten!
See the following pages for more information!



Lieferung & Zahlungsart

siehe unsere [Liefer- und Versandbedingungen](#)

Zuschläge

- Mindermengenzuschlag
- Trockeneiszuschlag
- Gefahrgutzuschlag
- Expressversand

SZABO-SCANDIC HandelsgmbH

Quellenstraße 110, A-1100 Wien

T. +43(0)1 489 3961-0

F. +43(0)1 489 3961-7

mail@szabo-scandic.com

www.szabo-scandic.com

[linkedin.com/company/szaboscandic](https://www.linkedin.com/company/szaboscandic) 

IgM Recombinant Monoclonal Antibody [BLR294L]

Rabbit Recombinant Monoclonal

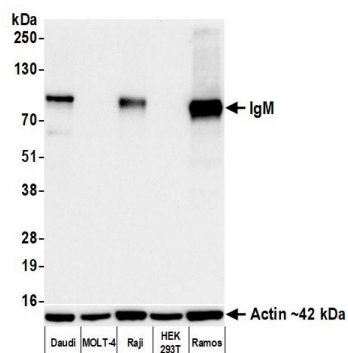
Purified

Catalog No. A700-294-T Uniprot ID P01871

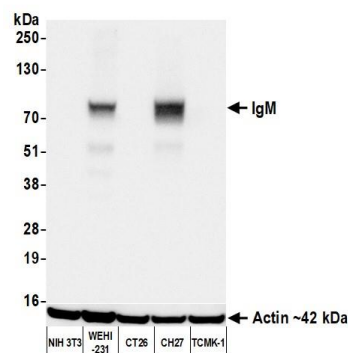
Lot No. 1

| | |
|------------------------------|-----------------------------------------------------------------------------------------------------------------------------------------------------------------------------------------------------------------------------------------------------------------------------------------------------------------------------------------------------------------------------------------------------------------------------------------------------------------------------------------------------------------------------------------------------------------------------------------------------------------------------------|
| APPLICATIONS | WB, IP, IHC, ICC, Flow Cyt |
| SPECIES REACTIVITY | Human, Mouse |
| AMOUNT | 10 µl (5+ tests) |
| CONCENTRATION | 100 µg/ml |
| STORAGE/SHELF LIFE | 2 – 8°C / 1 year from date of receipt |
| PHYSICAL STATE | Liquid |
| BUFFER | Borate Buffered Saline (BBS) pH 8.2 with 0.1% BSA and 0.09% Sodium Azide |
| ISOTYPE | IgG |
| CLONE # | BLR294L |
| ORIGIN | USA |
| PRODUCTION PROCEDURES | Recombinant antibody was purified from cell culture supernatant. Immunogen was purified human IgM (P01871). |
| APPLICATIONS | Centrifuge tube to remove product from lid. Optimal working dilutions should be determined experimentally by the investigator. Prepare working dilution immediately before use. Western Blot 1:1,000 Immunoprecipitation 20 µl/1 mg lysate Immunohistochemistry 1:100 to 1:500. Epitope retrieval with citrate buffer pH 6.0 is recommended for FFPE tissue sections. Immunocytochemistry 1:100 to 1:500. Epitope retrieval with citrate buffer pH 6.0 is recommended for FFPE cell sections. Flow Cytometry Fixed in 4% formaldehyde and permeabilized with 90% methanol. 1 µl per 1 × 10 ⁶ cells. |
| IHC HUMAN CONTROLS | Appendix, B-cell Lymphoma, Tonsil, Daudi Cells, Raji Cells, Ramos Cells |
| IHC MOUSE CONTROLS | Gut, Spleen, CH27 Cells, WEHI-231 Cells |
| ADDITIONAL INFO | https://www.fortislife.com/p/A700-294-T Use the link above to view SDS, a current list of citations, and other product specific information. |

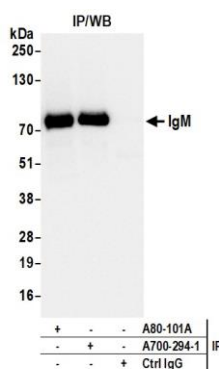
This document certifies that this product has met all of the quality control standards defined by Bethyl Laboratories, Inc.
Michael Spencer, PhD Date: September 28, 2023



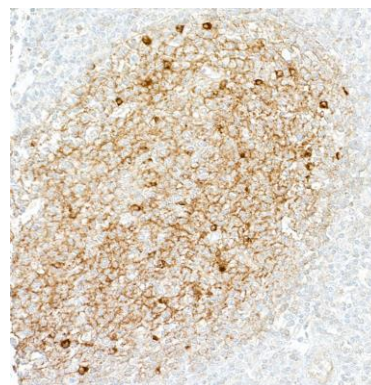
Detection of human IgM by western blot. *Samples:* Whole cell lysate (10 µg) from Daudi, MOLT-4, Raji, HEK293T, and Ramos cells prepared using NETN lysis buffer. *Antibody:* Rabbit anti-IgM recombinant monoclonal antibody [BLR294L] (A700-294 lot 1) used at 1:1000. *Secondary:* HRP-conjugated goat anti-rabbit IgG (A120-101P). *Detection:* Chemiluminescence with an exposure time of 10 seconds. Lower Panel: Rabbit anti-Actin recombinant monoclonal antibody [BLR057F] (A700-057).



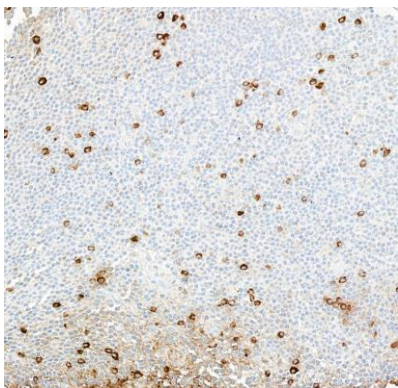
Detection of mouse IgM by western blot. *Samples:* Whole cell lysate (50 µg) from NIH 3T3, WEHI-231, CT26, CH27, and TCMK-1 cells prepared using NETN lysis buffer. *Antibody:* Rabbit anti-IgM recombinant monoclonal antibody [BLR294L] (A700-294 lot 1) used at 1:1000. *Secondary:* HRP-conjugated goat anti-rabbit IgG (A120-101P). *Detection:* Chemiluminescence with an exposure time of 1 second. Lower Panel: Rabbit anti-Actin recombinant monoclonal antibody [BLR057F] (A700-057).



Detection of human IgM by western blot of immunoprecipitates. *Samples:* Whole cell lysate (1.0 mg per IP reaction; 20% of IP loaded) from Ramos cells prepared using NETN lysis buffer. *Antibodies:* Rabbit anti-IgM recombinant monoclonal antibody [BLR294L] (A700-294 lot 1) used for IP at 20 µl/mg lysate. IgM was also immunoprecipitated by a second antibody against IgM (A80-101A). For blotting immunoprecipitated IgM, A700-294 was used at 1:1000. *Detection:* Chemiluminescence with an exposure time of 3 seconds.



Detection of human IgM by immunohistochemistry. *Sample:* FFPE section of tonsil. *Antibody:* Rabbit anti-IgM recombinant monoclonal antibody [BLR294L] (A700-294). *Secondary:* HRP-conjugated goat anti-rabbit IgG (A120-501P).



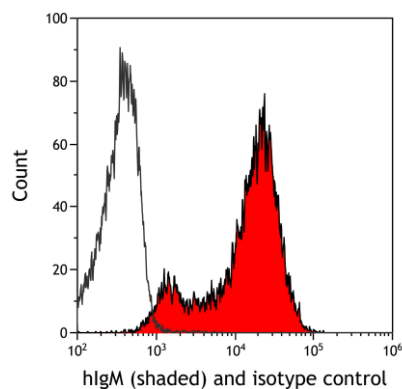
Detection of human IgM by immunohistochemistry.
Sample: FFPE section of B-cell lymphoma. *Antibody:* Rabbit anti-IgM recombinant monoclonal antibody [BLR294L] (A700-294). *Secondary:* HRP-conjugated goat anti-rabbit IgG (A120-501P).



Detection of human IgM by immunocytochemistry.
Sample: FFPE section of Daudi cells. *Antibody:* Rabbit anti-IgM recombinant monoclonal antibody [BLR294L] (A700-294). *Secondary:* HRP-conjugated goat anti-rabbit IgG (A120-501P).



Detection of mouse IgM by immunocytochemistry.
Sample: FFPE section of WEHI-231 cells. *Antibody:* Rabbit anti-IgM recombinant monoclonal antibody [BLR294L] (A700-294). *Secondary:* HRP-conjugated goat anti-rabbit IgG (A120-501P).



Detection of human IgM (shaded) in Raji cells by flow cytometry. *Antibody:* Rabbit anti-IgM recombinant monoclonal antibody [BLR294L] (A700-294) or isotype control (unshaded). *Secondary:* DyLight® 650-conjugated goat anti-rabbit IgG (A120-101D5).