



SZABO SCANDIC

Part of Europa Biosite

Produktinformation



Forschungsprodukte & Biochemikalien



Zellkultur & Verbrauchsmaterial



Diagnostik & molekulare Diagnostik



Laborgeräte & Service

Weitere Information auf den folgenden Seiten!
See the following pages for more information!



Lieferung & Zahlungsart

siehe unsere [Liefer- und Versandbedingungen](#)

Zuschläge

- Mindermengenzuschlag
- Trockeneiszuschlag
- Gefahrgutzuschlag
- Expressversand

SZABO-SCANDIC HandelsgmbH

Quellenstraße 110, A-1100 Wien

T. +43(0)1 489 3961-0

F. +43(0)1 489 3961-7

mail@szabo-scandic.com

www.szabo-scandic.com

[linkedin.com/company/szaboscandic](https://www.linkedin.com/company/szaboscandic) 

IgM Recombinant Monoclonal Antibody [BLR294L]

Rabbit Recombinant Monoclonal

Purified

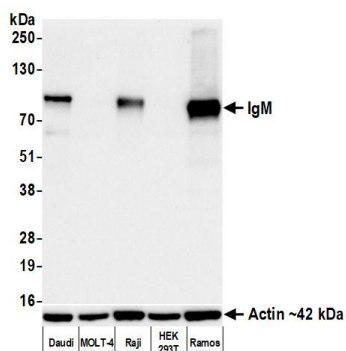
Catalog No. A700-294

Uniprot ID P01871

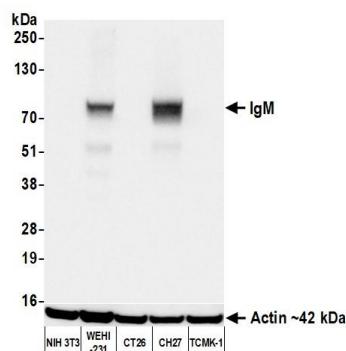
Lot No. 1

APPLICATIONS	WB, IP, IHC, ICC, Flow Cyt
SPECIES REACTIVITY	Human, Mouse
AMOUNT	100 µl (50+ tests)
CONCENTRATION	100 µg/ml
STORAGE/SHELF LIFE	2 – 8°C / 1 year from date of receipt
PHYSICAL STATE	Liquid
BUFFER	Borate Buffered Saline (BBS) pH 8.2 with 0.1% BSA and 0.09% Sodium Azide
ISOTYPE	IgG
CLONE #	BLR294L
ORIGIN	USA
PRODUCTION PROCEDURES	Recombinant antibody was purified from cell culture supernatant. Immunogen was purified human IgM (P01871).
APPLICATIONS	Centrifuge tube to remove product from lid. Optimal working dilutions should be determined experimentally by the investigator. Prepare working dilution immediately before use. Western Blot 1:1,000 Immunoprecipitation 20 µl/1 mg lysate Immunohistochemistry 1:100 to 1:500. Epitope retrieval with citrate buffer pH 6.0 is recommended for FFPE tissue sections. Immunocytochemistry 1:100 to 1:500. Epitope retrieval with citrate buffer pH 6.0 is recommended for FFPE cell sections. Flow Cytometry Fixed in 4% formaldehyde and permeabilized with 90% methanol. 1 µl per 1 × 10 ⁶ cells.
IHC HUMAN CONTROLS	Appendix, B-cell Lymphoma, Tonsil, Daudi Cells, Raji Cells, Ramos Cells
IHC MOUSE CONTROLS	Gut, Spleen, CH27 Cells, WEHI-231 Cells
ADDITIONAL INFO	https://www.fortislife.com/p/A700-294 Use the link above to view SDS, a current list of citations, and other product specific information.

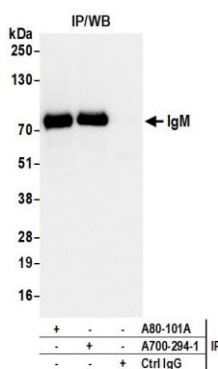
This document certifies that this product has met all of the quality control standards defined by Bethyl Laboratories, Inc.
Michael Spencer, PhD Date: September 27, 2023



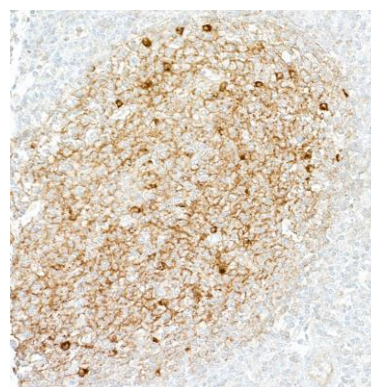
Detection of human IgM by western blot. *Samples:* Whole cell lysate (10 µg) from Daudi, MOLT-4, Raji, HEK293T, and Ramos cells prepared using NETN lysis buffer. *Antibody:* Rabbit anti-IgM recombinant monoclonal antibody [BLR294L] (A700-294 lot 1) used at 1:1000. *Secondary:* HRP-conjugated goat anti-rabbit IgG (A120-101P). *Detection:* Chemiluminescence with an exposure time of 10 seconds. Lower Panel: Rabbit anti-Actin recombinant monoclonal antibody [BLR057F] (A700-057).



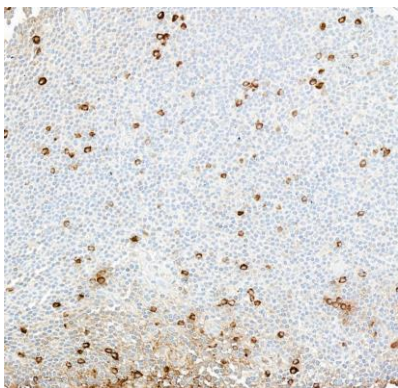
Detection of mouse IgM by western blot. *Samples:* Whole cell lysate (50 µg) from NIH 3T3, WEHI-231, CT26, CH27, and TCMK-1 cells prepared using NETN lysis buffer. *Antibody:* Rabbit anti-IgM recombinant monoclonal antibody [BLR294L] (A700-294 lot 1) used at 1:1000. *Secondary:* HRP-conjugated goat anti-rabbit IgG (A120-101P). *Detection:* Chemiluminescence with an exposure time of 1 second. Lower Panel: Rabbit anti-Actin recombinant monoclonal antibody [BLR057F] (A700-057).



Detection of human IgM by western blot of immunoprecipitates. *Samples:* Whole cell lysate (1.0 mg per IP reaction; 20% of IP loaded) from Ramos cells prepared using NETN lysis buffer. *Antibodies:* Rabbit anti-IgM recombinant monoclonal antibody [BLR294L] (A700-294 lot 1) used for IP at 20 µl/mg lysate. IgM was also immunoprecipitated by a second antibody against IgM (A80-101A). For blotting immunoprecipitated IgM, A700-294 was used at 1:1000. *Detection:* Chemiluminescence with an exposure time of 3 seconds.



Detection of human IgM by immunohistochemistry. *Sample:* FFPE section of tonsil. *Antibody:* Rabbit anti-IgM recombinant monoclonal antibody [BLR294L] (A700-294). *Secondary:* HRP-conjugated goat anti-rabbit IgG (A120-501P).



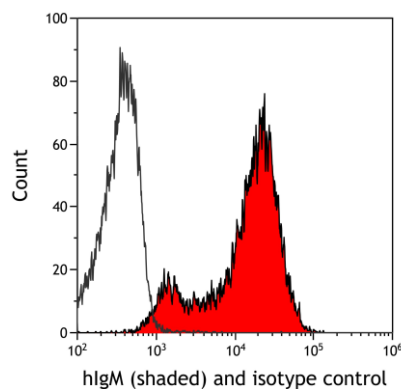
Detection of human IgM by immunohistochemistry.
Sample: FFPE section of B-cell lymphoma. *Antibody:* Rabbit anti-IgM recombinant monoclonal antibody [BLR294L] (A700-294). *Secondary:* HRP-conjugated goat anti-rabbit IgG (A120-501P).



Detection of human IgM by immunocytochemistry.
Sample: FFPE section of Daudi cells. *Antibody:* Rabbit anti-IgM recombinant monoclonal antibody [BLR294L] (A700-294). *Secondary:* HRP-conjugated goat anti-rabbit IgG (A120-501P).



Detection of mouse IgM by immunocytochemistry.
Sample: FFPE section of WEHI-231 cells. *Antibody:* Rabbit anti-IgM recombinant monoclonal antibody [BLR294L] (A700-294). *Secondary:* HRP-conjugated goat anti-rabbit IgG (A120-501P).



Detection of human IgM (shaded) in Raji cells by flow cytometry. *Antibody:* Rabbit anti-IgM recombinant monoclonal antibody [BLR294L] (A700-294) or isotype control (unshaded). *Secondary:* DyLight® 650-conjugated goat anti-rabbit IgG (A120-101D5).