



SZABO SCANDIC

Part of Europa Biosite

Produktinformation



Forschungsprodukte & Biochemikalien



Zellkultur & Verbrauchsmaterial



Diagnostik & molekulare Diagnostik



Laborgeräte & Service

Weitere Information auf den folgenden Seiten!
See the following pages for more information!



Lieferung & Zahlungsart

siehe unsere [Liefer- und Versandbedingungen](#)

Zuschläge

- Mindermengenzuschlag
- Trockeneiszuschlag
- Gefahrgutzuschlag
- Expressversand

SZABO-SCANDIC HandelsgmbH

Quellenstraße 110, A-1100 Wien

T. +43(0)1 489 3961-0

F. +43(0)1 489 3961-7

mail@szabo-scandic.com

www.szabo-scandic.com

[linkedin.com/company/szaboscandic](https://www.linkedin.com/company/szaboscandic) 

E-Selectin/CD62E Recombinant Monoclonal Antibody [BLR295L]

Rabbit Recombinant Monoclonal

Purified		RefSeq ID	NP_000441.2
Catalog No.	A700-295-T	Uniprot ID	P16581
Lot No.	1	GeneID	6401

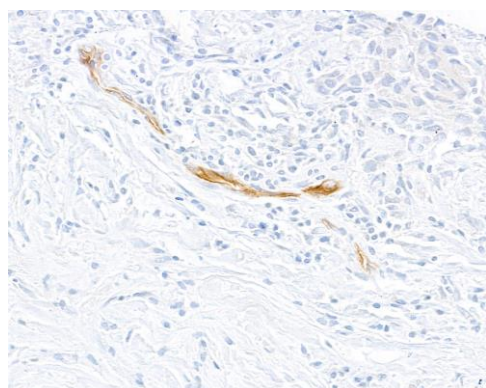
APPLICATIONS	WB, IP, IHC, ICC, Flow Cyt
SPECIES REACTIVITY	Human
AMOUNT	10 µl (5+ tests)
CONCENTRATION	1000 µg/ml
STORAGE/SHELF LIFE	2 - 8°C / 1 year from date of receipt
PHYSICAL STATE	Liquid
BUFFER	Borate Buffered Saline (BBS) pH 8.2 with 0.09% Sodium Azide, BSA-Free
ISOTYPE	IgG
CLONE #	BLR295L
ORIGIN	USA
PRODUCTION PROCEDURES	Recombinant antibody was purified from cell culture supernatant. Immunogen was a recombinant protein representing the extracellular domain of human E-selectin (residues 22-555, NP_000441.2).
APPLICATIONS	Centrifuge tube to remove product from lid. Optimal working dilutions should be determined experimentally by the investigator. Prepare working dilution immediately before use. Western Blot 1:1,000 Immunoprecipitation 6 µl/1 mg lysate Immunohistochemistry 1:100 to 1:500. Epitope retrieval with citrate buffer pH 6.0 is recommended for FFPE tissue sections. Immunocytochemistry 1:100 to 1:500. Epitope retrieval with citrate buffer pH 6.0 is recommended for FFPE cell sections. Flow Cytometry Fixed in 4% formaldehyde and permeabilized with 90% methanol. 1 µl per 1 x 10 ⁶ cells.
IHC HUMAN CONTROLS	Appendix, Breast Carcinoma, Tonsil
ADDITIONAL INFO	https://www.fortislife.com/p/A700-295-T Use the link above to view SDS, a current list of citations, and other product specific information.

This document certifies that this product has met all of the quality control standards defined by Bethyl Laboratories, Inc.
Michael Spencer, PhD Date: September 28, 2023

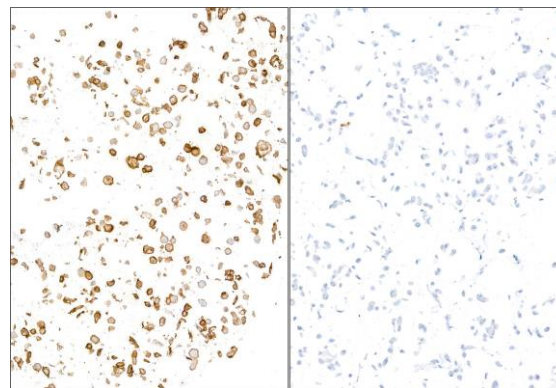


Detection of human E-Selectin/CD62E by western blot.
Samples: Whole cell lysate (50 µg) from HUVEC-C cells untreated (-) or treated (+) with 10ng/mL TNFalpha.
Antibody: Rabbit anti-E-Selectin/CD62E recombinant monoclonal antibody [BLR295L] (A700-295 lot 1) used at 1:1000.
Secondary: HRP-conjugated goat anti-rabbit IgG (A120-101P).
Detection: Chemiluminescence with an exposure time of 10 seconds.
 Lower Panel: Rabbit anti-Actin recombinant monoclonal antibody [BLR057F] (A700-057).

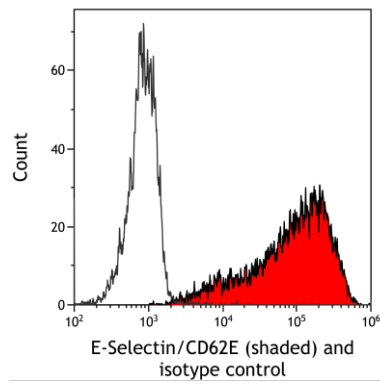
Detection of human E-Selectin/CD62E by western blot of immunoprecipitates.
Samples: Whole cell lysate (1.0 mg per IP reaction; 20% of IP loaded) from HUVEC-C cells treated with 10ng/mL TNFalpha.
Antibodies: Rabbit anti-E-Selectin/CD62E recombinant monoclonal antibody [BLR295L] (A700-295 lot 1) used for IP at 6 µl/mg lysate. E-Selectin/CD62E was also immunoprecipitated by a second antibody against a different epitope of E-Selectin/CD62E (BL-2789A-4F3).
 For blotting immunoprecipitated E-Selectin/CD62E, A700-295 was used at 1:1000.
Detection: Chemiluminescence with an exposure time of 10 seconds.



Detection of human E-Selectin/CD62E by immunohistochemistry.
Sample: FFPE section of breast carcinoma.
Antibody: Rabbit anti-E-Selectin/CD62E recombinant monoclonal antibody [BLR295L] (A700-295).
Secondary: HRP-conjugated goat anti-rabbit IgG (A120-501P).



Detection of human E-Selectin/CD62E by immunocytochemistry.
Sample: FFPE section of HUVEC-C cells treated with TNF-alpha (left) and mock treated HUVEC-C cells (right).
Antibody: Rabbit anti-E-Selectin/CD62E recombinant monoclonal antibody [BLR295L] (A700-295).
Secondary: HRP-conjugated goat anti-rabbit IgG (A120-501P).



Detection of human E-Selectin/CD62E (shaded) in TNF- α treated HUVEC cells by flow cytometry. *Antibody:* Rabbit anti-E-Selectin/CD62E recombinant monoclonal antibody [BLR295L] (A700-295) or isotype control (unshaded). *Secondary:* DyLight[®] 650-conjugated goat anti-rabbit IgG (A120-101D5).