



SZABO SCANDIC

Part of Europa Biosite

Produktinformation



Forschungsprodukte & Biochemikalien



Zellkultur & Verbrauchsmaterial



Diagnostik & molekulare Diagnostik



Laborgeräte & Service

Weitere Information auf den folgenden Seiten!
See the following pages for more information!



Lieferung & Zahlungsart

siehe unsere [Liefer- und Versandbedingungen](#)

Zuschläge

- Mindermengenzuschlag
- Trockeneiszuschlag
- Gefahrgutzuschlag
- Expressversand

SZABO-SCANDIC HandelsgmbH

Quellenstraße 110, A-1100 Wien

T. +43(0)1 489 3961-0

F. +43(0)1 489 3961-7

mail@szabo-scandic.com

www.szabo-scandic.com

[linkedin.com/company/szaboscandic](https://www.linkedin.com/company/szaboscandic) 

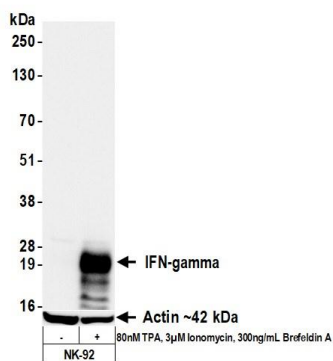
IFN-gamma Recombinant Monoclonal Antibody [BLR300L]

Rabbit Recombinant Monoclonal

Purified		RefSeq ID	NP_000610.2
Catalog No.	A700-300	Uniprot ID	P01579
Lot No.	1	GeneID	3458

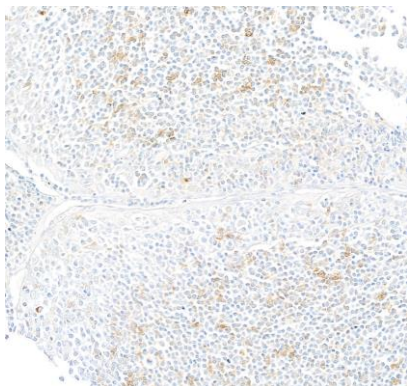
APPLICATIONS	WB, IP, IHC, ICC
SPECIES REACTIVITY	Human
AMOUNT	100 µl (50+ tests)
CONCENTRATION	1000 µg/ml
STORAGE/SHELF LIFE	2 - 8°C / 1 year from date of receipt
PHYSICAL STATE	Liquid
BUFFER	Borate Buffered Saline (BBS) pH 8.2 with 0.09% Sodium Azide, BSA-Free
ISOTYPE	IgG
CLONE #	BLR300L
ORIGIN	USA
PRODUCTION PROCEDURES	Recombinant antibody was purified from cell culture supernatant. Immunogen was a recombinant protein representing human Interferon gamma (residues 23-266, NP_000610.2).
APPLICATIONS	Centrifuge tube to remove product from lid. Optimal working dilutions should be determined experimentally by the investigator. Prepare working dilution immediately before use. Western Blot 1:1,000 Immunoprecipitation 6 µl/1 mg lysate Immunohistochemistry 1:100 to 1:500. Epitope retrieval with citrate buffer pH 6.0 is recommended for FFPE tissue sections. Immunocytochemistry 1:100 to 1:500. Epitope retrieval with citrate buffer pH 6.0 is recommended for FFPE cell sections.
IHC HUMAN CONTROLS	Appendix, Metastatic Lymph Node, Tonsil, HDLM-2 Cells
ADDITIONAL INFO	https://www.fortislifecom.com/p/A700-300 Use the link above to view SDS, a current list of citations, and other product specific information.

This document certifies that this product has met all of the quality control standards defined by Bethyl Laboratories, Inc.
Michael Spencer, PhD Date: September 27, 2023



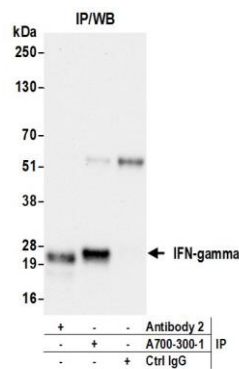
Detection of human IFN-gamma by western blot.

Samples: Whole cell lysate (50 µg) from NK-92 cells untreated (-) and treated (+) with 80nM TPA, 3µM Ionomycin, 300ng/mL Brefeldin A. *Antibody:* Rabbit anti-IFN-gamma recombinant monoclonal antibody [BLR300L] (A700-300 lot 1) used at 1:1000. *Secondary:* HRP-conjugated goat anti-rabbit IgG (A120-101P). *Detection:* Chemiluminescence with an exposure time of 3 seconds. Lower Panel: Rabbit anti-Actin recombinant monoclonal antibody [BLR057F] (A700-057).



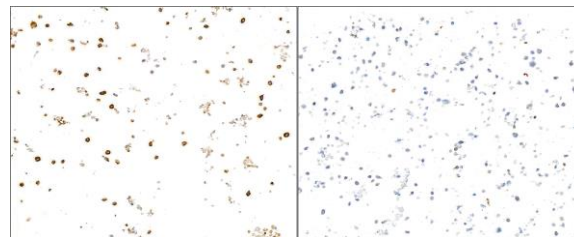
Detection of human IFN-gamma by immunohistochemistry.

Sample: FFPE section of tonsil. *Antibody:* Rabbit anti-IFN-gamma recombinant monoclonal antibody [BLR300L] (A700-300). *Secondary:* HRP-conjugated goat anti-rabbit IgG (A120-501P).



Detection of human IFN-gamma by western blot of immunoprecipitates.

Samples: Whole cell lysate (1.0 mg per IP reaction; 20% of IP loaded) from NK-92 cells treated with 80nM TPA, 3µM Ionomycin, and 300ng/mL Brefeldin A. *Antibodies:* Rabbit anti-IFN-gamma recombinant monoclonal antibody [BLR300L] (A700-300 lot 1) used for IP at 6 µl/mg lysate. IFN-gamma was also immunoprecipitated by a second antibody against a different epitope of IFN-gamma (Antibody 2). For blotting immunoprecipitated IFN-gamma, A700-300 was used at 1:1000. *Detection:* Chemiluminescence with an exposure time of 30 seconds.



Detection of human IFN-gamma by immunocytochemistry.

Sample: FFPE section of NK-92 cells treated with TPA, Ionomycin, Brefeldin A (left) and mock treated NK-92 cells (right). *Antibody:* Rabbit anti-IFN-gamma recombinant monoclonal antibody [BLR300L] (A700-300). *Secondary:* HRP-conjugated goat anti-rabbit IgG (A120-501P).