



# SZABO SCANDIC

Part of Europa Biosite

## Produktinformation



Forschungsprodukte & Biochemikalien



Zellkultur & Verbrauchsmaterial



Diagnostik & molekulare Diagnostik



Laborgeräte & Service

Weitere Information auf den folgenden Seiten!  
See the following pages for more information!



### Lieferung & Zahlungsart

siehe unsere [Liefer- und Versandbedingungen](#)

### Zuschläge

- Mindermengenzuschlag
- Trockeneiszuschlag
- Gefahrgutzuschlag
- Expressversand

### SZABO-SCANDIC HandelsgmbH

Quellenstraße 110, A-1100 Wien

T. +43(0)1 489 3961-0

F. +43(0)1 489 3961-7

[mail@szabo-scandic.com](mailto:mail@szabo-scandic.com)

[www.szabo-scandic.com](http://www.szabo-scandic.com)

[linkedin.com/company/szaboscandic](https://www.linkedin.com/company/szaboscandic) 

# NCR1 /NKp46 Recombinant Monoclonal Antibody [BLR309M]

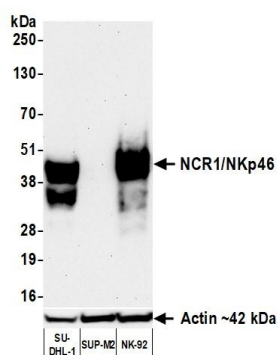
Rabbit Recombinant Monoclonal

Purified		RefSeq ID	NP_004820.2
Catalog No.	A700-309-T	Uniprot ID	O76036
Lot No.	1	GeneID	9437

---

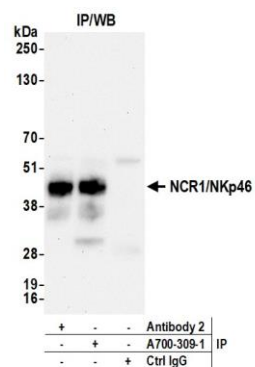
<b>APPLICATIONS</b>	WB, IP
<b>SPECIES REACTIVITY</b>	Human
<b>AMOUNT</b>	20 µl (2 blots)
<b>CONCENTRATION</b>	500 µg/ml
<b>STORAGE/SHELF LIFE</b>	2 - 8°C / 1 year from date of receipt
<b>PHYSICAL STATE</b>	Liquid
<b>BUFFER</b>	Phosphate Buffered Saline (PBS) with 0.1% BSA and 0.09% Sodium Azide
<b>ISOTYPE</b>	IgG
<b>CLONE #</b>	BLR309M
<b>ORIGIN</b>	USA
<b>PRODUCTION PROCEDURES</b>	Recombinant antibody was purified from cell culture supernatant.  Immunogen was a recombinant protein representing human NCR1 /NKp46 (residues 20-255, NP_004820.2).
<b>APPLICATIONS</b>	Centrifuge tube to remove product from lid. Optimal working dilutions should be determined experimentally by the investigator. Prepare working dilution immediately before use.  Western Blot                      1:1,000 Immunoprecipitation        12 µl/mg lysate
<b>APPLICATION NOTES</b>	All western blot analysis is performed using 5% Milk-TBST for blocking and as antibody diluent. Primary antibody is incubated overnight. Western blots of cell lysates are performed using Goat anti-Rabbit IgG Heavy and Light Chain Antibody (Cat. No. A120-101P). Western blots of immunoprecipitates are performed using Goat anti-Rabbit Light Chain HRP Conjugate (Cat. No. A120-113P) with 5% Normal Pig Serum (Cat. No. S100-020) added to the blocking buffer.
<b>ADDITIONAL INFO</b>	<a href="https://www.fortislife.com/p/A700-309-T">https://www.fortislife.com/p/A700-309-T</a> Use the link above to view SDS, a current list of citations, and other product specific information.

This document certifies that this product has met all of the quality control standards defined by Bethyl Laboratories, Inc.  
Michael Spencer, PhD Date: January 31, 2024



#### Detection of human NCR1 /NKp46 by western blot.

**Samples:** Whole cell lysate (50 µg) from SU-DHL-1, SUP-M2, and NK-92 cells prepared using NETN lysis buffer. **Antibody:** Rabbit anti-NCR1/NKp46 recombinant monoclonal antibody [BLR309M] (A700-309 lot 1) used at 1:1000. **Secondary:** HRP-conjugated goat anti-rabbit IgG (A120-101P). **Detection:** Chemiluminescence with an exposure time of 3 minutes.



#### Detection of human NCR1 /NKp46 by western blot of immunoprecipitates.

**Samples:** Whole cell lysate (1.0 mg per IP reaction; 20% of IP loaded) from SU-DHL-1 cells prepared using NETN lysis buffer. **Antibodies:** Rabbit anti-NCR1/NKp46 recombinant monoclonal antibody [BLR309M] (A700-309 lot 1) used for IP at 12 µl/mg lysate. NCR1/NKp46 was also immunoprecipitated by a second antibody against a different epitope of NCR1/NKp46 (Antibody 2). For blotting immunoprecipitated NCR1/NKp46, A700-309 was used at 1:1000. **Detection:** Chemiluminescence with an exposure time of 75 seconds.