



# SZABO SCANDIC

Part of Europa Biosite

## Produktinformation



Forschungsprodukte & Biochemikalien



Zellkultur & Verbrauchsmaterial



Diagnostik & molekulare Diagnostik



Laborgeräte & Service

Weitere Information auf den folgenden Seiten!  
See the following pages for more information!



### Lieferung & Zahlungsart

siehe unsere [Liefer- und Versandbedingungen](#)

### Zuschläge

- Mindermengenzuschlag
- Trockeneiszuschlag
- Gefahrgutzuschlag
- Expressversand

### SZABO-SCANDIC HandelsgmbH

Quellenstraße 110, A-1100 Wien

T. +43(0)1 489 3961-0

F. +43(0)1 489 3961-7

[mail@szabo-scandic.com](mailto:mail@szabo-scandic.com)

[www.szabo-scandic.com](http://www.szabo-scandic.com)

[linkedin.com/company/szaboscandic](https://www.linkedin.com/company/szaboscandic) 

# EZH2 Recombinant Monoclonal Antibody [BLR311M]

Rabbit Recombinant Monoclonal

Purified		RefSeq ID	NP_004447.2
Catalog No.	A700-311-T	Uniprot ID	Q15910
Lot No.	1	GeneID	2146

---

<b>APPLICATIONS</b>	IHC
<b>SPECIES REACTIVITY</b>	Human, Mouse
<b>AMOUNT</b>	10 µl (5+ tests)
<b>CONCENTRATION</b>	1000 µg/ml
<b>STORAGE/SHELF LIFE</b>	2 – 8°C / 1 year from date of receipt
<b>PHYSICAL STATE</b>	Liquid
<b>BUFFER</b>	Phosphate Buffered Saline (PBS) with 0.09% Sodium Azide, BSA-Free
<b>ISOTYPE</b>	IgG
<b>CLONE #</b>	BLR311M
<b>ORIGIN</b>	USA
<b>PRODUCTION PROCEDURES</b>	Recombinant antibody was purified from cell culture supernatant.

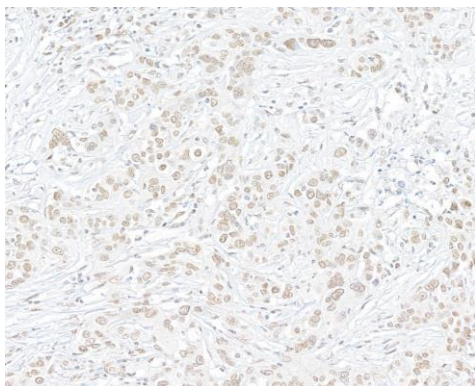
Immunogen was a peptide representing a region between residue 701 and the C-terminus (residue 751) of human Histone-lysine N-methyltransferase EZH2 using the numbering given in entry NP\_004447.2 (Gene ID 2146).

<b>APPLICATIONS</b>	Centrifuge tube to remove product from lid. Optimal working dilutions should be determined experimentally by the investigator. Prepare working dilution immediately before use.  Immunohistochemistry 1:100 to 1:500. Epitope retrieval with citrate buffer pH 6.0 is recommended for FFPE tissue sections.
---------------------	---

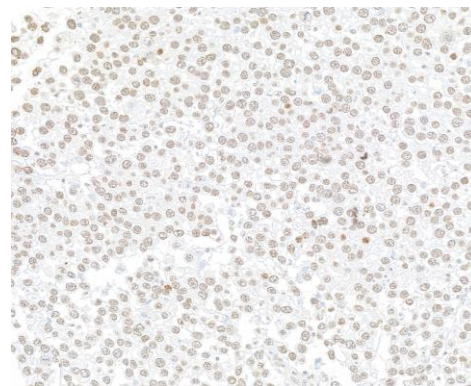
<b>IHC HUMAN CONTROLS</b>	Breast Carcinoma, Colon Carcinoma, Prostate Carcinoma, Seminoma, Tonsil
---------------------------	---

<b>ADDITIONAL INFO</b>	<a href="https://www.fortislife.com/p/A700-311-T">https://www.fortislife.com/p/A700-311-T</a> Use the link above to view SDS, a current list of citations, and other product specific information.
------------------------	---

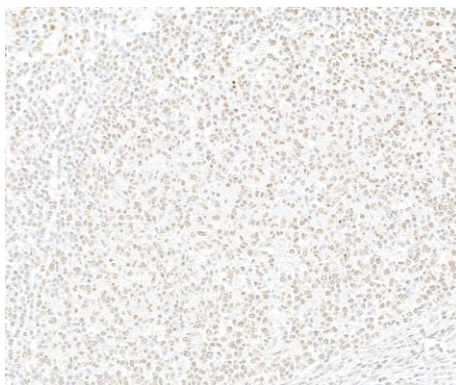
This document certifies that this product has met all of the quality control standards defined by Bethyl Laboratories, Inc.  
Michael Spencer, PhD Date: February 27, 2024



**Detection of human EZH2 by immunohistochemistry.**  
*Sample:* FFPE section of breast carcinoma. *Antibody:* Rabbit anti-EZH2 recombinant monoclonal antibody [BLR311M] (A700-311). *Secondary:* HRP-conjugated goat anti-rabbit IgG (A120-501P)



**Detection of human EZH2 by immunohistochemistry.**  
*Sample:* FFPE section of testicular seminoma. *Antibody:* Rabbit anti-EZH2 recombinant monoclonal antibody [BLR311M] (A700-311). *Secondary:* HRP-conjugated goat anti-rabbit IgG (A120-501P)



**Detection of human EZH2 by immunohistochemistry.**  
*Sample:* FFPE section of tonsil. *Antibody:* Rabbit anti-EZH2 recombinant monoclonal antibody [BLR311M] (A700-311). *Secondary:* HRP-conjugated goat anti-rabbit IgG (A120-501P)