



SZABO SCANDIC

Part of Europa Biosite

Produktinformation



Forschungsprodukte & Biochemikalien



Zellkultur & Verbrauchsmaterial



Diagnostik & molekulare Diagnostik



Laborgeräte & Service

Weitere Information auf den folgenden Seiten!
See the following pages for more information!



Lieferung & Zahlungsart

siehe unsere [Liefer- und Versandbedingungen](#)

Zuschläge

- Mindermengenzuschlag
- Trockeneiszuschlag
- Gefahrgutzuschlag
- Expressversand

SZABO-SCANDIC HandelsgmbH

Quellenstraße 110, A-1100 Wien

T. +43(0)1 489 3961-0

F. +43(0)1 489 3961-7

mail@szabo-scandic.com

www.szabo-scandic.com

[linkedin.com/company/szaboscandic](https://www.linkedin.com/company/szaboscandic) 

EZH2 Recombinant Monoclonal Antibody [BLR311M]

Rabbit Recombinant Monoclonal

Purified		RefSeq ID	NP_004447.2
Catalog No.	A700-311	Uniprot ID	Q15910
Lot No.	1	GeneID	2146

APPLICATIONS	IHC
SPECIES REACTIVITY	Human, Mouse
AMOUNT	100 µl (50+ tests)
CONCENTRATION	1000 µg/ml
STORAGE/SHELF LIFE	2 – 8°C / 1 year from date of receipt
PHYSICAL STATE	Liquid
BUFFER	Phosphate Buffered Saline (PBS) with 0.09% Sodium Azide, BSA-Free
ISOTYPE	IgG
CLONE #	BLR311M
ORIGIN	USA
PRODUCTION PROCEDURES	Recombinant antibody was purified from cell culture supernatant.

Immunogen was a peptide representing a region between residue 701 and the C-terminus (residue 751) of human Histone-lysine N-methyltransferase EZH2 using the numbering given in entry NP_004447.2 (Gene ID 2146).

APPLICATIONS Centrifuge tube to remove product from lid. Optimal working dilutions should be determined experimentally by the investigator. Prepare working dilution immediately before use.

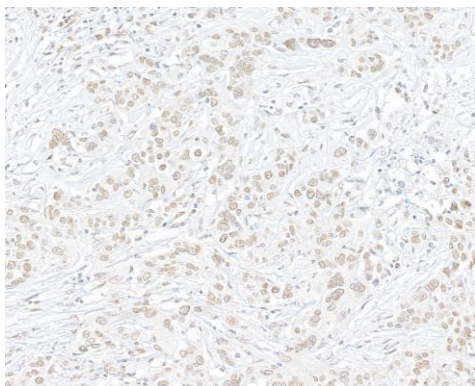
Immunohistochemistry 1:100 to 1:500. Epitope retrieval with citrate buffer pH 6.0 is recommended for FFPE tissue sections.

IHC HUMAN CONTROLS Breast Carcinoma, Colon Carcinoma, Prostate Carcinoma, Seminoma, Tonsil

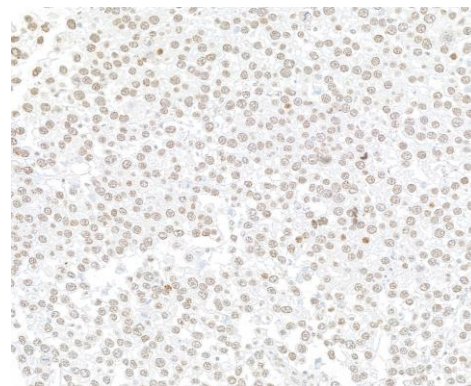
ADDITIONAL INFO <https://www.fortislife.com/p/A700-311>

Use the link above to view SDS, a current list of citations, and other product specific information.

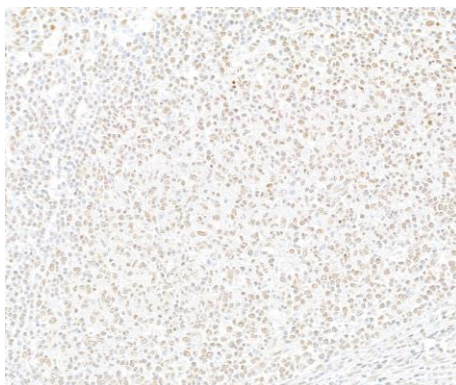
This document certifies that this product has met all of the quality control standards defined by Bethyl Laboratories, Inc.
Michael Spencer, PhD Date: February 27, 2024



Detection of human EZH2 by immunohistochemistry.
Sample: FFPE section of breast carcinoma. *Antibody:* Rabbit anti-EZH2 recombinant monoclonal antibody [BLR311M] (A700-311). *Secondary:* HRP-conjugated goat anti-rabbit IgG (A120-501P)



Detection of human EZH2 by immunohistochemistry.
Sample: FFPE section of testicular seminoma. *Antibody:* Rabbit anti-EZH2 recombinant monoclonal antibody [BLR311M] (A700-311). *Secondary:* HRP-conjugated goat anti-rabbit IgG (A120-501P)



Detection of human EZH2 by immunohistochemistry.
Sample: FFPE section of tonsil. *Antibody:* Rabbit anti-EZH2 recombinant monoclonal antibody [BLR311M] (A700-311). *Secondary:* HRP-conjugated goat anti-rabbit IgG (A120-501P)